

Tanah Merah, 8 Seletar Place

Another one sold by Neil!

Presented to the market is this immaculate 4-bedroom home, a true gem that exudes care and attention to detail from the moment you arrive. Boasting a professionally landscaped yard and flawless interior presentation, this property stands out as one of the best-maintained homes in the area.

Perfectly positioned midway between Brisbane and the Gold Coast, and within a 5 min drive to the Logan Hyperdome Shopping Centre, this residence offers an unbeatable combination of comfort, convenience, and lifestyle.

Key Features

- *4 Spacious Bedrooms: All bedrooms come with built-in wardrobes and ceiling fans for comfort.
- *Air-Conditioned Master Bedroom: Generous in size with 2-way access to a fully renovated bathroom.
- *Renovated Bathroom: Stylish and functional with modern fixtures.
- *Additional 2nd Toilet: Conveniently located next to a large bedroom, with potential to



For Sale
Interest over \$799,000

View
ljhooker.com.au/639HVG

Contact
Neil Cowan
0432 468 439
ncowan.shailerpark@ljhooker.com.au



LJ Hooker Shailer Park
(07) 3102 0829

Disclaimer: All information contained therein is gathered from relevant third parties sources. We cannot guarantee or give any warranty about the information provided. Interested parties must rely solely on their own enquiries.

reconfigure into a small ensuite.

*Modern Kitchen: Recently renovated with ample cupboard space, a new Westinghouse oven, and a ceramic cooktop.

*Tille Air-conditioned Living Areas: Low-maintenance flooring for high-traffic zones.

*Flexible Garage Space: Remote-operated lock-up garage with custom cabinetry in the laundry, offering potential for conversion into a self-contained unit.

*Double Car port

Outdoor Features

*Expansive patio area with two tranquil fountains —perfect for entertaining or relaxing.

*Fully landscaped backyard featuring a stunning dry creek bed design in the center as well as a Large Garden shed.

*Sustainability Add-Ons:

o5,700-litre water tanks for garden and household use.

o6kW solar power system to save on energy bills.

Recent Updates

*Freshly restored roof.

*New carpets throughout the home for added comfort.

Prime Location

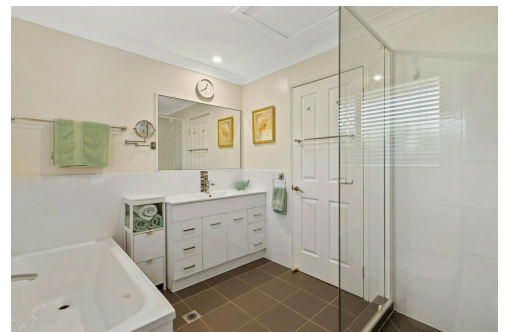
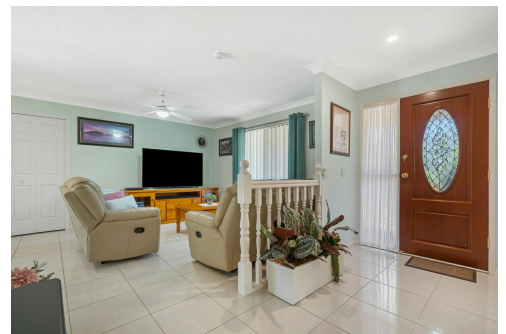
Situated in a highly sought-after area, this home is surrounded by a wealth of amenities:

*Walking distance to Logan Hyperdome Shopping Centre with its eateries, boutiques, and entertainment options.

*Easy access to universities, schools, parks, walking tracks, and Logan River for fishing and recreation.

*Quick connectivity to the M1, making commutes to Brisbane or the Gold Coast a breeze.

Don't miss this rare opportunity to secure a home that offers both style and substance in one of Queensland's most convenient locations.



More About this Property

Property ID	639HVG
Property Type	House
Land Area	600 m2

Neil Cowan 0432 468 439

Licensee | ncowan.shailerpark@ljhooker.com.au

LJ Hooker Shailer Park (07) 3102 0829

2/3 Mandew Street, SHAILER PARK QLD 4128

shailerpark@ljhooker.com.au | shailerpark@ljhooker.com.au



Disclaimer: All information contained therein is gathered from relevant third parties sources.

We cannot guarantee or give any warranty about the information provided. Interested parties must rely solely on their own enquiries.

**LJ Hooker Shailer Park
(07) 3102 0829**



8 Seletar Place **TANAH MERAH**

4 | 1 | 3 | 224m²



All dimensions are approximate; they are subject to errors and inaccuracies and no liability will be accepted. Plans are shown for marketing purposes only.



LJ Hooker Shailer Park
(07) 3102 0829

Disclaimer: All information contained therein is gathered from relevant third parties sources. We cannot guarantee or give any warranty about the information provided. Interested parties must rely solely on their own enquiries.