



63 Hanlon Street, Tanah Merah

## **OPEN HOME CANCELLED - SAT 28TH FEB - Entertainers Delight - Beautifully Renovated Abode - In-Ground Pool - 6m x 3.6m Shed**

OPEN HOME CANCELLED - SAT 28TH FEB

This tastefully renovated home is loaded with extras, including a striking new timber pivot front door, new flooring and a new kitchen and laundry to name a few key upgrades.

For those who enjoy entertaining there is a massive entertainment area with built-in bar and enough space to host the largest of gatherings and accommodate all your outdoor furniture. A handy 6m x 3.6m shed with heaps of storage or you could covert this space into a home office or gym, you decide.

Keep cool on those warmer days in the in-ground pool with umbrella to provide some needed shade. A fully fenced back yard for the children and pets to play safely.

Tanah Merah is an ideal family hot spot due to its affordability and

3 🏠 1 🚿 2 🚗

**FOR SALE**  
Contact Agent

### **AGENTS**

Melinda Lee-Ball  
0415 520 748  
melinda.leeball@ljhooker.com.au

Luisa Sargent  
0439 599 080  
luisa.sargent@ljhooker.com.au

### **AGENCY**

LJ Hooker Shailer Park  
(07) 3102 0829

All information contained therein is gathered from relevant third parties sources.  
We cannot guarantee or give any warranty about the information provided.  
Interested parties must rely solely on their own enquiries.

 **LJ Hooker**

brilliant infrastructure. A short stroll to bus service, local shops, restaurants, Tansey Park, Tansey Park Sports Club, walking tracks and markets. Only minutes to the Hyperdome Shopping Centre, direct access to the M1 and Logan Motorway. Centrally located between the Gold Coast and Brisbane CBD.

As you enter you will be greeted by stunning hybrid floors, Plantation shutters throughout, a black modern fan and a contemporary pendant light over dining table and entrance. The dining room flows seamlessly to the entertainment area.

The striking kitchen is well appointed with a modern 900mm oven, high-end pull-out mixer, stainless steel dishwasher, black fittings, stone bench tops, double pantry, lots of cupboards and overlooks the pool and entertainment area so you can still be a part of the conversation.

There is an updated two-way bathroom with a neutral colour palette, stone bench top, a separate bathtub, shower and a new separate toilet.

Three bedrooms all with Plantation shutters, black modern ceiling fans and built-in cupboards (doors are not installed on the cupboards).

The laundry has been freshly updated with stone benchtop, overhead cupboards, and subway tile feature wall.

A double partially enclosed carport which is open to one side to the entertainment area.

Features - Established veggie gardens, security screens and clothes line.

Renovated and low maintenance properties are in high demand, don't let this opportunity pass you by. Contact Melinda Lee-Ball for additional information. We look forward to welcoming you to one of our open homes!

Disclaimer - virtual furniture has been used for the marketing of this property.

## MORE DETAILS

Property ID 6BYHVG  
Property Type House  
Land Area 635 m2  
Including Air Conditioning  
Toilets (1)  
Pool  
Dishwasher  
Outdoor Entertaining  
Built-in-Robes  
Secure Parking  
Fully Fenced

**Melinda Lee-Ball 0415 520 748**

Licensed Real Estate Agent | [melinda.leeball@ljhooker.com.au](mailto:melinda.leeball@ljhooker.com.au)

**Luisa Sargent 0439 599 080**

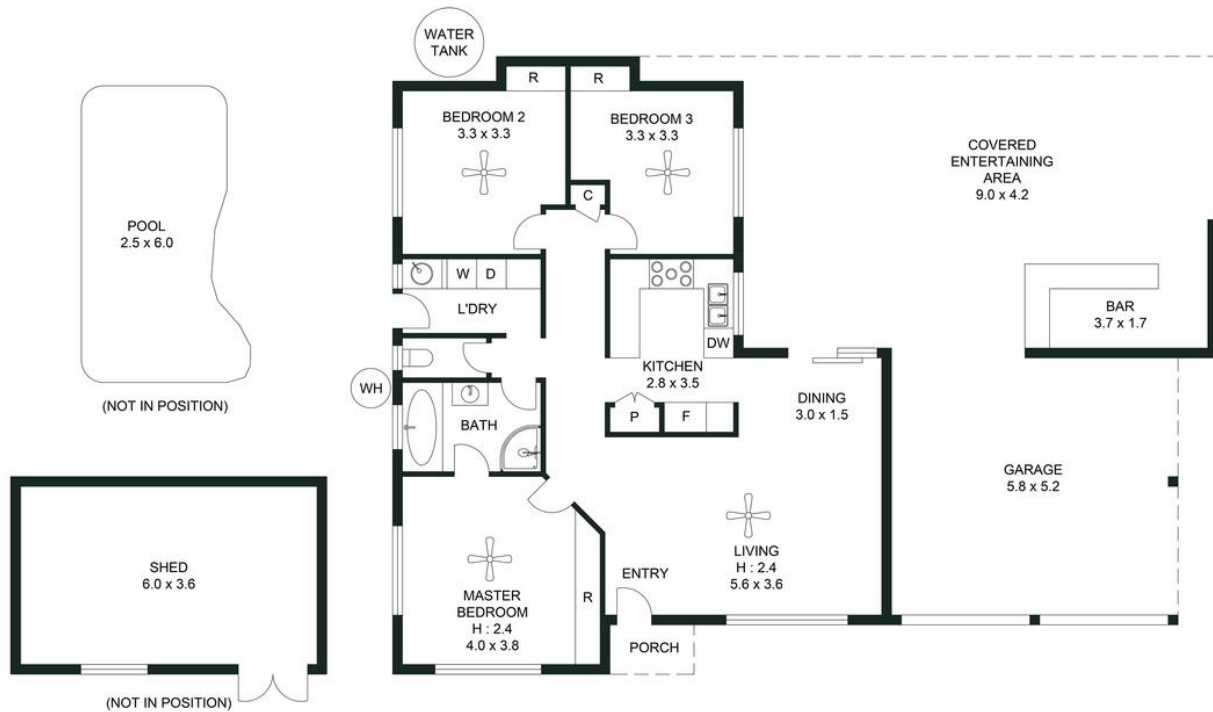
Licensed Real Estate Agent | [luisa.sargent@ljhooker.com.au](mailto:luisa.sargent@ljhooker.com.au)

**LJ Hooker Shailer Park (07) 3102 0829**

2/3 Mandew Street, SHAILER PARK QLD 4128

[shailerpark.ljhooker.com.au](http://shailerpark.ljhooker.com.au) | [shailerpark@ljhooker.com.au](mailto:shailerpark@ljhooker.com.au)





**63 HANLON STREET, TANAH MERAH**

Plans should not be relied on. Interested parties should make and rely on their own enquiries.  
 The floor plan is not to scale, measurements are indicative and in metres. Exterior elements are not in position.



APPROXIMATE AREAS	
Internal Area	92 sqm
External Area	111 sqm
Total Area	203 sqm

