






5 Kabang Court, Tanah Merah

Spacious and Fully Renovated Executive Home with Three Living Areas —Offering Privacy & Panoramic Views

Privately positioned is this meticulously presented home, offering immense space for a growing family. Freshly painted inside and out, multiple living areas, beautifully renovated with attractive decor, Plantation shutters in the master bedroom, bathrooms and laundry, new flooring and carpet throughout.

This private 1255m2 allotment offers complete tranquillity, a flat yard for the children and pets to play, a gorgeous cubby house and a fire pit area for those cooler nights. The ultimate surprise is the outstanding panoramic views that can be admired from most aspects of the home. The heated sparkling in-ground pool with new crepey crawly and travertine tiles which large enough to accommodate outdoor chairs/seating where you can watch the kids splash around and soak in the amazing mountainous views. Enjoy hosting your guests on the generous covered entertainment area with new privacy blind.

4  2  4 

FOR SALE
Contact Agent

AGENTS

Melinda Lee-Ball
0415 520 748
melinda.leeball@ljhooker.com.au

Luisa Sargent
0439 599 080
luisa.sargent@ljhooker.com.au

AGENCY

LJ Hooker Shailer Park
(07) 3102 0829

All information contained therein is gathered from relevant third parties sources.
We cannot guarantee or give any warranty about the information provided.
Interested parties must rely solely on their own enquiries.

 **LJ Hooker**

Tanah Merah is an ideal family hot spot due to its affordability and brilliant infrastructure. A short stroll to bus service, local shops, restaurants, Tansey Park, Tansey Park Sports Club, walking tracks and markets. Only minutes to the Hyperdome Shopping Centre, direct access to the M1 and Logan Motorway. Centrally located between the Gold Coast and Brisbane CBD.

As you enter via the new striking timber pivot door, you are greeted by high ceilings, Plantation shutters and stunning timber floors.

Lower level - A large separate lounge room with sliding door leading to a full-length veranda where you can watch those glorious sunsets. A gorgeous modern powder room on this level along with a beautiful internal laundry with sliding door leading to the new clothesline and storage under the stairs. The back of the house looks like something from a magazine with its vast open plan design. Featuring an oversized family room with new air-conditioning and sliding doors connecting to the entertainment area. The dining room overlooks the pool and well-equipped kitchen.

The chef in the family will enjoy this functional kitchen which boasts a 900mm free standing gas oven, 20mil stone bench tops, stunning splash back, integrated dishwasher, under mounted sink, soft close drawers, plenty of cupboard and bench space, pull out pantry and breakfast bar.

Upper level - At the top of the stairs is a generous rumpus room with natural light, ideal for the kids to have their own space to retreat to and opens onto a full-length veranda where you can enjoy your morning beverage. There are four oversized bedrooms all with built-ins and ceiling fans including the grand master suite with space to accommodate a desk or makeup vanity, customised walk-in robe and a luxurious ensuite with large walk-in shower and a dual floating vanity. The exquisite tile chosen gives it that high end finish. The main bathroom is a mirror image of the ensuite to tie in all the finishes, featuring a separate bathtub, shower and separate toilet.

Features - Solar system, tinted windows, security screens, ample storage, new partial Colorbond fencing and two garden sheds.

MORE DETAILS

Property ID 6A0HVG
Property Type House
Land Area 1255 m2
Including Air Conditioning
Pool
Dishwasher
Outdoor Entertaining
Floorboards
Built-in-Robes
Secure Parking
Fully Fenced
Remote Garage

Melinda Lee-Ball 0415 520 748

Licensed Real Estate Agent | melinda.leeball@ljhooker.com.au

Luisa Sargent 0439 599 080

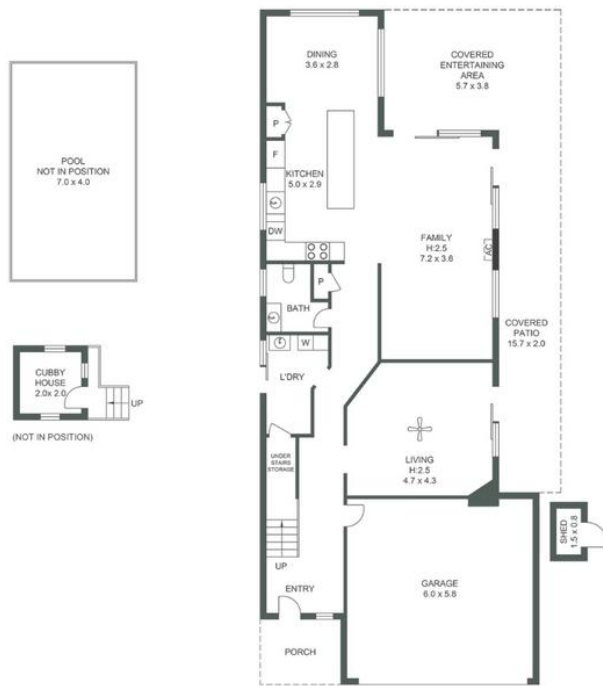
Licensed Real Estate Agent | luisa.sargent@ljhooker.com.au

LJ Hooker Shailer Park (07) 3102 0829

2/3 Mandew Street, SHAILER PARK QLD 4128

shailerpark.ljhooker.com.au | shailerpark@ljhooker.com.au





GROUND FLOOR



FIRST FLOOR

5 KABANG COURT, TANAH MERAH

Plans should not be relied on. Interested parties should make and rely on their own enquiries. The floor plan is not to scale; measurements are indicative and in metres. Exterior elements are not in position.



APPROXIMATE AREAS	
Internal Area	240 sqm
External Area	134 sqm
Total Area	374 sqm



The Difference