



25-27 Bayview Drive, Tanah Merah

## Tranquil Bushland Setting with a Fully Self-Contained Studio - Ideal for Teenager's, Visitor's, or Rental Income

This majestic location with bushland backdrop will make you feel like you are living somewhere picturesque like Mount Tamborine or Maleny. Nestled in a whisper quiet cul-de-sac location, this charming home will welcome you. The front veranda is the perfect space to relax and enjoy your morning beverage.

There is the added bonus of having a separate self-contained and air-conditioned studio downstairs, with its own entrance, its own large separate deck for hosting gatherings, a decent sized kitchenette with cooktop, rangehood, dishwasher, lots of storage and open plan room to host a bed, a bathroom with space for a washing machine and a door leading to the downstairs communal laundry. This space is ideal for teenagers, a rental income or for visitors.

The lush leafy 1178m2 allotment will provide you with supreme privacy. Relax and enjoy the spectacular outlook and birdlife from the large rear deck. You will never tire from nature's beauty.

5 3 2

**FOR SALE**  
Contact Agent

**VIEW**  
Sat 21st Feb @ 12:00PM - 12:30PM

**AGENTS**  
Melinda Lee-Ball  
0415 520 748  
melinda.leeball@ljhooker.com.au

Luisa Sargent  
0439 599 080  
luisa.sargent@ljhooker.com.au

**AGENCY**  
LJ Hooker Shailer Park  
(07) 3102 0829

All information contained therein is gathered from relevant third parties sources.  
We cannot guarantee or give any warranty about the information provided.  
Interested parties must rely solely on their own enquiries.

**LJ Hooker**

Tanah Merah is an ideal family hot spot due to its affordability and brilliant infrastructure. A short stroll to bus service, local shops, restaurants, Tansey Park, Tansey Park Sports Club, walking tracks and markets. Only minutes to the Hyperdome Shopping Centre, direct access to the M1 and Logan Motorway. Centrally located between the Gold Coast and Brisbane CBD.

Upstairs - Leafy outlooks can be admired from most aspects of the home. Stunning polished timber floors in the vast open plan air-conditioned dining, lounge and family room which connects seamlessly to the wrap around deck.

The heart of the home kitchen offers a walk-in pantry, dishwasher, lots of cupboards and overlooks the deck.

Four spacious bedrooms, all air-conditioned including the master suite. Behind mirrored doors is a spacious walk-in robe and ensuite.

Double remote garage with under roof storage.

Dual living properties are always in high demand. Don't let this unique opportunity pass you by. Contact Melinda Lee-Ball for additional information. We look forward to welcoming you at our open home!

Disclaimer - virtual furniture has been used for the marketing of this property.

## MORE DETAILS

Property ID	6BDHVG
Property Type	House
Land Area	1178 m2
Including	Air Conditioning
	Deck
	Outdoor Entertaining
	Floorboards
	Built-in-Robes

**Melinda Lee-Ball 0415 520 748**

Licensed Real Estate Agent | [melinda.leeball@ljhooker.com.au](mailto:melinda.leeball@ljhooker.com.au)

**Luisa Sargent 0439 599 080**

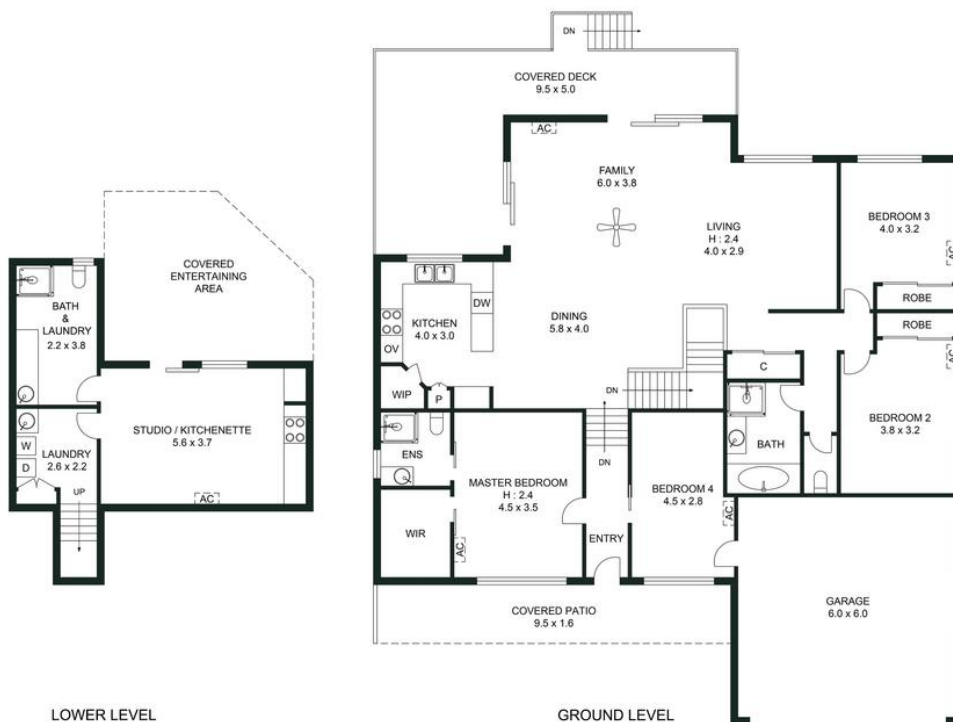
Licensed Real Estate Agent | [luisa.sargent@ljhooker.com.au](mailto:luisa.sargent@ljhooker.com.au)

**LJ Hooker Shailer Park (07) 3102 0829**

2/3 Mandew Street, SHAILER PARK QLD 4128

[shailerpark.ljhooker.com.au](http://shailerpark.ljhooker.com.au) | [shailerpark@ljhooker.com.au](mailto:shailerpark@ljhooker.com.au)





25-27 Bayview Drive, Tanah Merah

Plans should not be relied on. Interested parties should make and rely on their own enquiries.  
The floor plan is not to scale; measurements are indicative and in metres. Exterior elements are not in position.



APPROXIMATE AREAS	
Internal Area	237 sqm
External Area	46 sqm
Total Area	283 sqm

