



13 Perak Court, Tanah Merah

Spacious Family Home Loaded with Extra's - Prime Corner Position with Large Swim Spa

This beautifully presented family home offers the perfect balance of space, functionality, and effortless lifestyle appeal. Offering two stunning renovated bathrooms, two large living areas and a three-car carport.

The added bonus of having a heated (goes up to 38 degrees) swim spa to provide a compact, all-in-one alternative to a traditional pool by utilising powerful propulsion jets to create a continuous water current for stationary swimming. It's better than a pool as you can use it all year round.

The 744m2 corner allotment allows ample parking and space for a caravan. New Colorbond fencing and the option to add double gates in the future to allow full backyard access. 3m x 3m garden shed, two veggie gardens, heaps of firewood stackers for your fire pit, and an electric gate to the three-car carport, which is ideal for cars, camper van, trailer or jet skis. There is space in the driveway for 3 cars, providing ample off-street parking.

4 🚗 2 🚚 3 🚙

FOR SALE
Contact Agent

VIEW
Sat 13th Jun @ 1:00PM - 1:30PM

AGENTS
Melinda Lee-Ball
0415 520 748
melinda.leeball@ljhooker.com.au

Luisa Sargent
0439 599 080
luisa.sargent@ljhooker.com.au

AGENCY
LJ Hooker Shailer Park
(07) 3102 0829

All information contained therein is gathered from relevant third parties sources.
We cannot guarantee or give any warranty about the information provided.
Interested parties must rely solely on their own enquiries.

 **LJ Hooker**

Entertain your loved ones in comfort in the covered entertainment area with new modern grey tiles.

Tanah Merah is an ideal family hot spot due to its affordability and brilliant infrastructure. A short stroll to bus service, local shops, restaurants, Tansey Park, Tansey Park Sports Club, walking tracks and markets. Only minutes to the Hyperdome Shopping Centre, direct access to the M1 and Logan Motorway. Centrally located between the Gold Coast and Brisbane CBD.

As you enter you are immediately taken by surprise by the vast open space on offer in the air-conditioned lounge room and dining room. These areas will accommodate the largest of couches and furniture.

The central gallery kitchen features a Smeg dishwasher, breakfast bar, ample bench and storage space, pantry and flows effortlessly to the dining room.

To the front of the home is a fabulous, air-conditioned media room. You could use this space as a fifth bedroom, gym or work from home space, the choice is endless.

Four large bedrooms with mirrored built-ins and ceiling fans, two with air-conditioning, including the master suite with his and her customised cupboards. A striking renovated ensuite with two shower roses, large niche and floor to ceiling modern tiles.

The contemporary renovated large main bathroom features a soaker bathtub, two shower roses, storage niche and a beautiful floating timber vanity.

A generous walk-in linen or storage cupboard. It's right next to the kitchen so you could use it as a butler's pantry if you choose to.

Your dream sized laundry offers ample overhead hanging, gorgeous timber benchtops and storage cupboards.

The garage doors remain in place with handy 1m x 6m storage room behind it. There is a 3m x 3m covered patio which is ideal for a box trailer, bikes or storage. Two solar panels, new heat pump and party lights on the swim spa.

Don't let this beautiful home pass you by. Contact Melinda Lee-Ball or Luisa Sargent for additional information. We look forward to welcoming you at our open home!

MORE DETAILS

Property ID 6FQHVG
Property Type House
Land Area 744 m2
Including Air Conditioning
Toilets (2)
Spa
Dishwasher
Outdoor Entertaining
Built-in-Robes
Secure Parking
Fully Fenced
Solar Panels

Melinda Lee-Ball 0415 520 748

Licensed Real Estate Agent | melinda.leeball@ljhooker.com.au

Luisa Sargent 0439 599 080

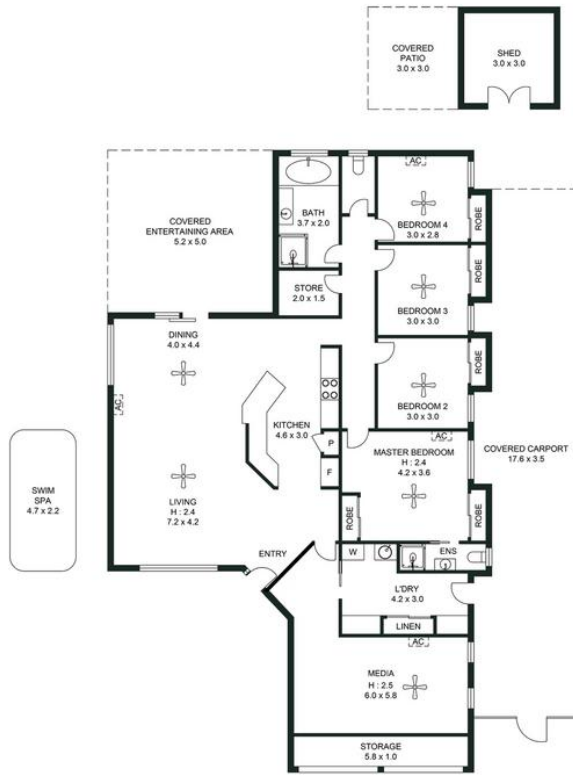
Licensed Real Estate Agent | luisa.sargent@ljhooker.com.au

LJ Hooker Shailer Park (07) 3102 0829

2/3 Mandew Street, SHAILER PARK QLD 4128

shailerpark.ljhooker.com.au | shailerpark@ljhooker.com.au





13 PERAK COURT, TANAH MERAH

Plans should not be relied on. Interested parties should make and rely on their own enquiries.
The floor plan is not to scale; measurements are indicative and in metres. Exterior elements are not in position.



APPROXIMATE AREAS	
Internal Area	176 sqm
External Area	85 sqm
Total Area	261 sqm

