



Tamworth, 4 Sea Eagle Avenue

Brand new home in Prestige Estate

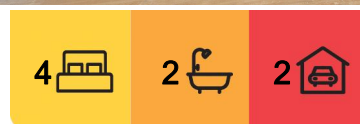
Welcome to 4 Sea Eagle Avenue! This stunning 4-bedroom, 2-bathroom house is now available for sale. With a generous land area of 1025 sqm, this property offers ample space and privacy for you and your family.

As you step inside, you will be greeted by a spacious and light-filled living area, perfect for entertaining guests or simply relaxing with your loved ones. The modern kitchen is equipped with high-quality appliances and ample storage space, making it a dream for any aspiring chef.

The property boasts four well-appointed bedrooms, providing plenty of room for everyone. The master bedroom features an ensuite, ensuring your comfort and convenience. In addition, there is the main bathroom with a large free standing bath, ensuring that there is never a wait for the facilities. Space will never be an issue, with a large Media room, Open plan living space as well as a separate rumpus room.



Disclaimer: All information contained therein is gathered from relevant third parties sources. We cannot guarantee or give any warranty about the information provided. Interested parties must rely solely on their own enquiries.



For Sale

Price range - \$850,000 - \$870,000

View

ljhooker.com.au/96BHTE

Contact

Samuel Spokes

0475 843 042

sam.spokes@ljhooker.com.au

LJ Hooker Tamworth
(02) 6767 1710

For those with vehicles, the property offers a double garage, providing secure parking and additional storage space. The outdoor area is perfect for those who love to entertain, with a spacious backyard that offers endless possibilities for outdoor activities and gardening, as well as side access, perfect for a future shed and pool.

Located in the sought-after Moore Creek area, this property offers a peaceful and family-friendly neighborhood. With easy access to schools, shops, and amenities, everything you need is just a short drive away.

The price guide for this property is By Negotiation, Don't miss out on this incredible opportunity, contact us today to arrange a viewing and make this property yours

More About this Property

| | |
|---------------|---------------------|
| Property ID | 96BHTE |
| Property Type | House |
| House Size | 1025 m ² |
| Including | Ensuite Balcony |

Samuel Spokes 0475 843 042
Licensee, Director - Sales Representative | sam.spokes@ljhooker.com.au

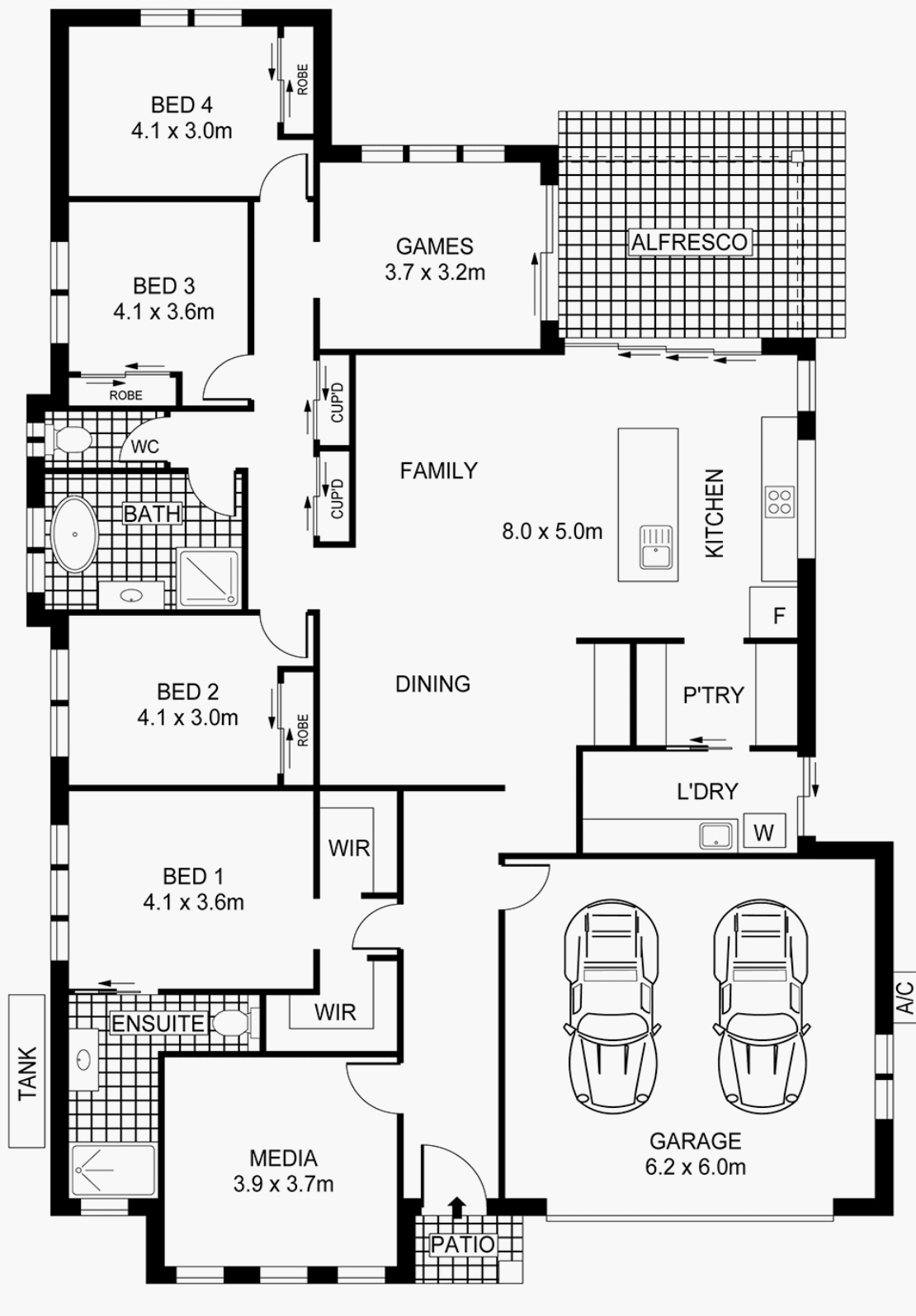
LJ Hooker Tamworth (02) 6767 1710
199 Peel Street, TAMWORTH NSW 2340
tamworth.ljhooker.com.au | tamworth@ljhooker.com.au






Disclaimer: All information contained therein is gathered from relevant third parties sources. We cannot guarantee or give any warranty about the information provided. Interested parties must rely solely on their own enquiries.

LJ Hooker Tamworth
(02) 6767 1710

4 Sea Eagle Ave, MOORE CREEK



 **LJ Hooker**

 x 4  x 2  x 2

Plan(s) shown are indicative only of layout. Dimensions are approximate.
No warranties or guarantees are given. Interested parties should rely on their own inquiries.
Floor plan by Protography.net.au

 **LJ Hooker**

LJ Hooker Tamworth
(02) 6767 1710

Disclaimer: All information contained therein is gathered from relevant third parties sources.
We cannot guarantee or give any warranty about the information provided. Interested parties must rely solely on their own enquiries.