



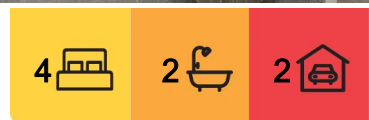
Tamworth, 19 Sea Eagle Avenue

Brand new home with a view

This stunning house located at 19 Sea Eagle Ave is a true gem waiting to be discovered. Boasting a perfect blend of modern elegance and timeless charm, this property is sure to captivate even the most discerning buyer.

As you step inside, you will be greeted by a spacious and inviting interior that exudes warmth and comfort. The open-plan layout seamlessly connects the living, dining, and kitchen areas, creating a harmonious flow that is perfect for both everyday living and entertaining guests. The abundance of natural light that floods the space further enhances the welcoming atmosphere.

The kitchen is a chef's dream, featuring top-of-the-line appliances, ample storage space, and a sleek design that will inspire culinary creativity. Whether you're hosting a dinner party or simply preparing a meal for your loved ones, this kitchen will exceed your expectations.



For Sale
By Negotiation

View
ljhooker.com.au/969HTE

Contact
Samuel Spokes
0475 843 042
sam.spokes@ljhooker.com.au
Cassie Semple
0429 580 081
cassie.semple@ljhooker.com.au



Disclaimer: All information contained therein is gathered from relevant third parties sources. We cannot guarantee or give any warranty about the information provided. Interested parties must rely solely on their own enquiries.

LJ Hooker Tamworth
(02) 6767 1710

The property offers four generously sized bedrooms, each providing a tranquil retreat for rest and relaxation. The master bedroom is a true sanctuary, complete with a luxurious ensuite and a walk-in wardrobe. The remaining bedrooms are equally impressive, offering walk-in robes in bedrooms two and three.

Step outside and be greeted by a large backyard, perfect for enjoying the outdoors and soaking up the sunshine. Whether you're hosting a barbecue or simply unwinding after a long day, this outdoor space is a true haven with plenty of space for a future shed and pool.

Located in the sought-after Moore Creek area, this property offers the perfect balance between tranquility and convenience. Enjoy the peace and quiet of suburban living while still being just a short drive away from essential amenities, schools, and recreational facilities.

Other features include:

- Ducted zoned reverse cycle heating and cooling
- Gas hot water
- Natural Gas
- Fully fenced
- Rear yard access

For more information Call Sam Spokes on 0475 843 042 or Cassie Semple on 0429 580 081

More About this Property

Property ID	969HTE
Property Type	House
Land Area	1013 m ²
Including	Ensuite Toilets (2)

Samuel Spokes 0475 843 042

Licensee, Director - Sales Representative | sam.spokes@ljhooker.com.au

Cassie Semple 0429 580 081

PA to Sam Spokes | cassie.semple@ljhooker.com.au

LJ Hooker Tamworth (02) 6767 1710

199 Peel Street, TAMWORTH NSW 2340

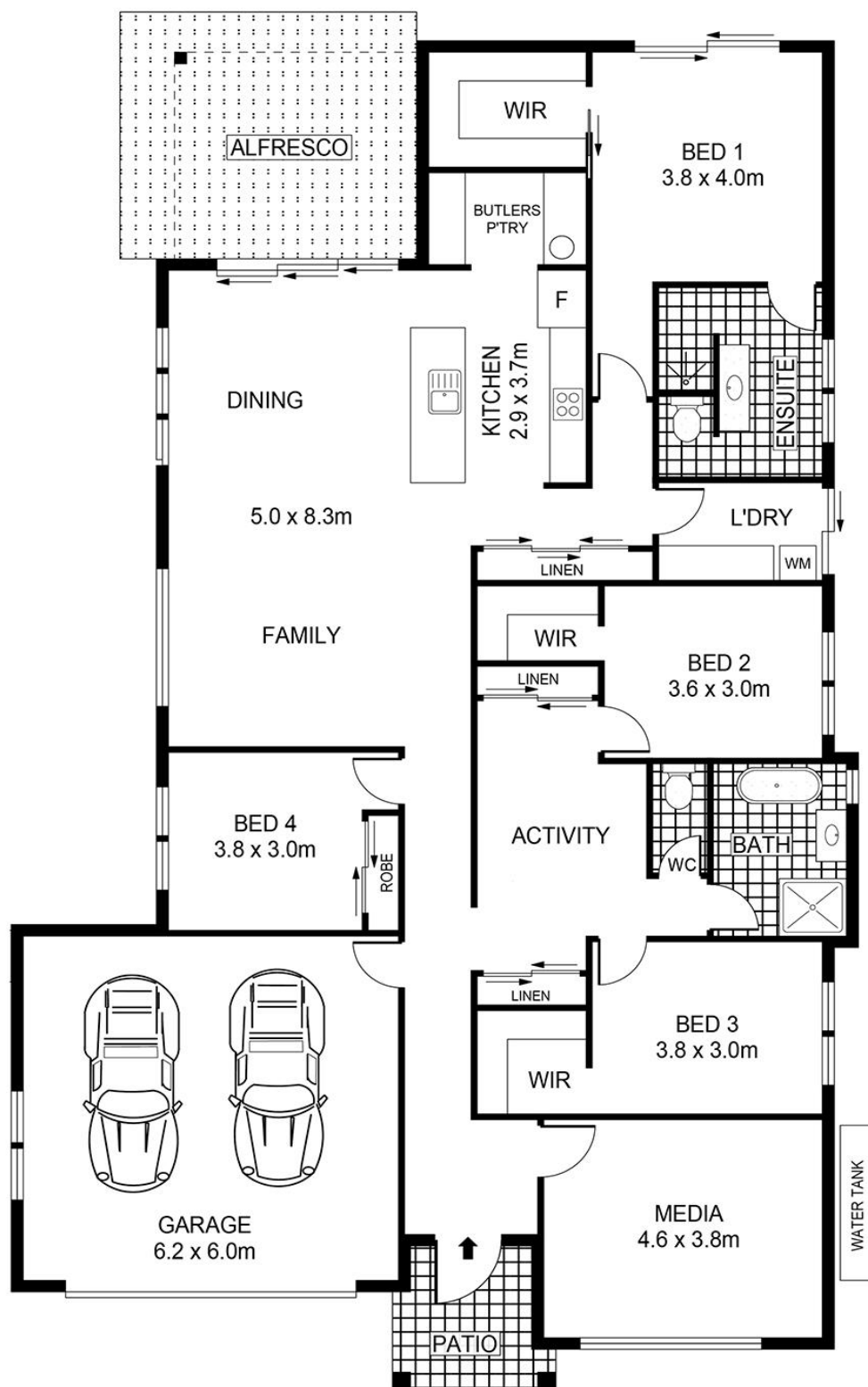
tamworth.ljhooker.com.au | tamworth@ljhooker.com.au






Disclaimer: All information contained therein is gathered from relevant third parties sources. We cannot guarantee or give any warranty about the information provided. Interested parties must rely solely on their own enquiries.

LJ Hooker Tamworth
(02) 6767 1710

19 Sea Eagle Ave, MOORE CREEK



 **LJ Hooker**

 x4  x2  x2

Plan(s) shown are indicative only of layout. Dimensions are approximate.
No warranties or guarantees are given. Interested parties should rely on their own inquiries.
Floor plan by Protography.net.au

 **LJ Hooker**

LJ Hooker Tamworth
(02) 6767 1710

Disclaimer: All information contained therein is gathered from relevant third parties sources.
We cannot guarantee or give any warranty about the information provided. Interested parties must rely solely on their own enquiries.