

## Tamborine, 17 Fairweather Court

Acreage with Breathtaking Views, Privacy & Lifestyle Freedom Backing the Birnam Range

Discover the ultimate tree-change lifestyle with this 6.77-acre sanctuary, where open skies, gently rolling land, and crisp mountain air come together in perfect harmony with comfort and convenience. Nestled against the serene backdrop of the Birnam Range, this property isn't just a home, it's your personal gateway to peace, privacy, and adventure.

Wake up to the gentle sound of birdsong and the breeze whispering through the trees. Sip your morning coffee as the sun rises over Mount Tamborine, with hot air balloons gliding silently across the sky and skydivers soaring in the distance.

Let the gentle mountain breeze drift through your home, carrying the fresh scent of native trees and a sense of deep, natural calm.

The Home: Warm, Inviting & Ready to Entertain



**Disclaimer:** All information contained therein is gathered from relevant third parties sources. We cannot guarantee or give any warranty about the information provided. Interested parties must rely solely on their own enquiries.



**For Sale**  
Expression of Interest

**View**  
By Appointment

**Contact**  
**Jessie McClymont**  
0455 177 930  
jmcclymont@ljhcomplete.com.au

**LJ Hooker Property Complete**  
**1300 360 388**



- 3 oversized bedrooms, including a private master retreat
- 2 separate living areas, both featuring their own fireplace
- A spacious, open-plan kitchen with ample bench space, storage, and views.
- High ceilings and natural light throughout, enhancing space and comfort
- Ample storage solutions for effortless living
- Huge outdoor entertainment area for gatherings in every season
- Double garage plus space for caravans, boats or machinery

The Land: Adventure & Opportunity

- 6.77 acres of gently rolling land with mature trees and open space
  - Perfect for hobby farming, riding motorbikes and quads, or storing heavy equipment
  - Backing directly onto the Birnam Range, take your hobbies beyond the fence line!
- Ideal for horse riding, downhill mountain biking, bushwalking or hiking
- Potential to build a granny flat or second dwelling (STCA)
  - Low-maintenance landscaped gardens that blend into the natural surroundings

Location: The Best of Both Worlds

- 5 minutes to Yarrabilba with shops, schools, doctors, gyms, and cafés
- Only 45 minutes to Brisbane CBD, 50 minutes to the Gold Coast
- Close to town but feels miles away from the hustle and bustle

Whether you're looking for a rural retreat, room for your family to grow, or land to explore and enjoy, this one-of-a-kind property delivers it all.

Call now to arrange your private inspection and experience the lifestyle you've been dreaming of.

Disclaimer:

Property images may have been digitally altered or staged for marketing purposes and may not constitute a complete representation of the property condition being purchased. Any photographs used by LJ Hooker may only show certain aspects of the property at the time the photographs are taken and any prospective buyer should inspect the property.

More About this Property

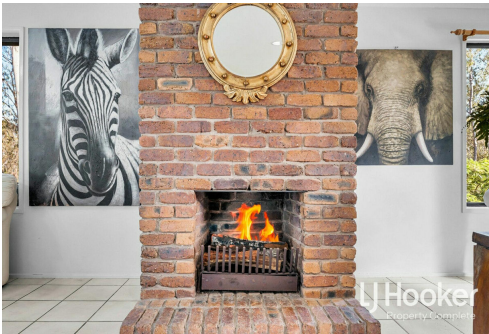
Property ID	1ZYEHGS
Property Type	AcreageSemi-rural
House Size	1980 m2
Land Area	6.77 acre
Including	Toilets (1) Fire Place Balcony Outdoor Entertaining Built-in-Robes Water Tank

Jessie McClymont 0455 177 930  
Sales Consultant | jmcclymont@ljhcomplete.com.au

LJ Hooker Property Complete 1300 360 388  
Level 1, 32 Everglade Street, YARRABILBA QLD 4207  
propertycomplete.ljhooker.com.au | admin@ljhcomplete.com.au



Disclaimer: All information contained therein is gathered from relevant third parties sources. We cannot guarantee or give any warranty about the information provided. Interested parties must rely solely on their own enquiries.



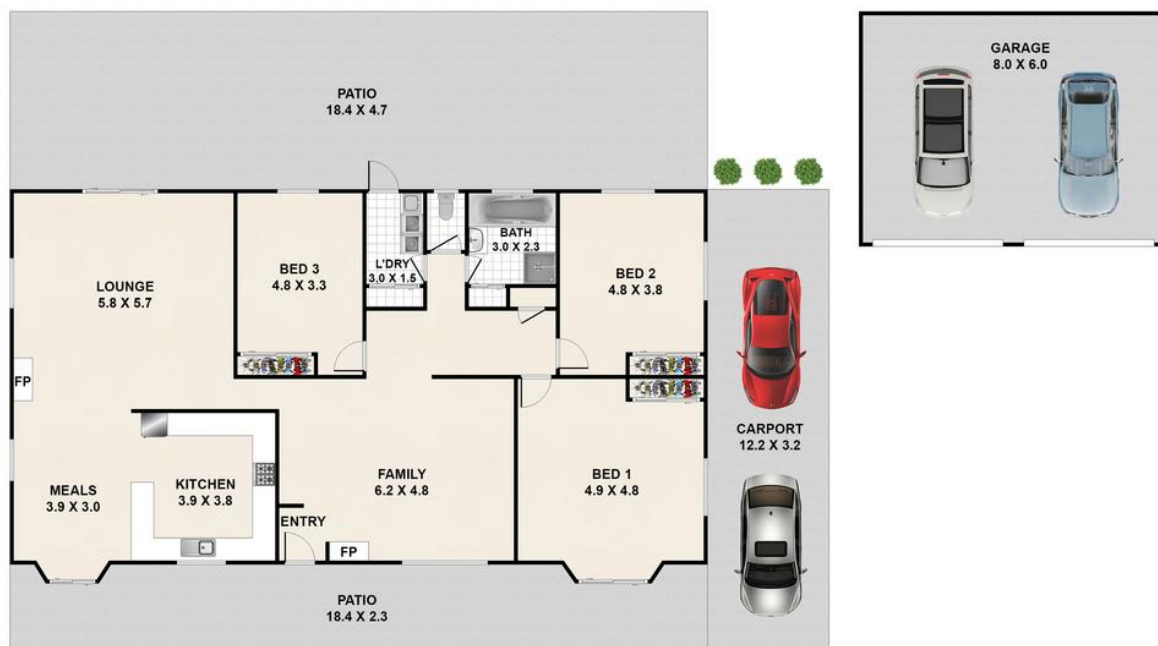
LJ Hooker Property Complete  
1300 360 388

17 Fairweather Court, Tamborine



3 | 1 | 4 | 391 Sqm | |

Total approx area includes outside covered areas



Whilst every attempt has been made to ensure the accuracy of the floorplan shown, all measurements, positioning, fixtures, fittings and any other data shown are an approximate interpretation for illustrative purposes only and are not to scale. No responsibility is taken for any error, omission, miss-statement or use of data shown



LJ Hooker Property Complete  
1300 360 388

**Disclaimer:** All information contained therein is gathered from relevant third parties sources. We cannot guarantee or give any warranty about the information provided. Interested parties must rely solely on their own enquiries.