



85 Kinabalu Drive, Tamborine Mountain

Roll Up Your Sleeves and Reap the Rewards


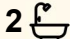

If you've been searching for an affordable way to enter the Tamborine Mountain property market, this could be the opportunity you've been waiting for. Set on a private 1,043m² block surrounded by established trees, this three-bedroom home offers plenty of potential for first-home buyers, DIY enthusiasts and renovators looking to add value over time.

There's plenty of scope to roll up your sleeves and make improvements to suit your own style and budget. Upstairs features an open plan kitchen, living and dining area opening onto a balcony with a leafy outlook, while downstairs provides additional space with a large rumpus room and storage area.

Whether you're looking for your first home, or a weekend project, this property presents a fantastic chance to secure a foothold on the Mountain and create something special.

Features:

- 1,043m²; block with established trees and natural surrounds
- Three bedrooms
- Master bedroom with ensuite

3  2  3 

FOR SALE

Offers Over \$799,000

VIEW

Sat 4th Jul @ 12:00PM - 12:30PM

AGENTS

Rachel Ryan
0433 774 501
rryan@ljhg.com.au

AGENCY

LJ Hooker Tamborine Mountain
(07) 5545 1500

All information contained therein is gathered from relevant third parties sources.
We cannot guarantee or give any warranty about the information provided.
Interested parties must rely solely on their own enquiries.

 **LJ Hooker**

- Open plan kitchen, living and dining area
- Covered balcony with peaceful leafy outlook
- Large downstairs rumpus room
- Family bathroom
- Separate laundry
- Double carport attached to the home
- Additional single carport
- Plenty of room to add value and improve over time
- Ideal for first-home buyers, DIY renovators and investors
- Quiet location close to schools, shops, cafes and local attractions

Bring your tools, your vision and a little hard work, and unlock the potential this property has to offer. Opportunities at this price point on Tamborine Mountain are becoming increasingly hard to find.

Enjoy the relaxed lifestyle that Tamborine Mountain is famous for, with local cafes, wineries, walking trails, markets and stunning lookouts all just minutes away. Offering a peaceful mountain setting while still being within commuting distance to the Gold Coast and Brisbane, it's easy to see why so many people choose to call the Mountain home.

Disclaimer: The photographs used in this marketing material were taken when the property was previously vacant and are intended for illustrative purposes only. Current presentation and condition of the property may differ.

We have, in preparing this information, used our best endeavours to ensure that the information contained herein is true and accurate but accept no responsibility and disclaim all liability in respect of any errors, omissions, inaccuracies or misstatements that may occur. Prospective purchasers should make their own enquiries to verify the information contained herein.

MORE DETAILS

Property ID	RJHZF
Property Type	House
House Size	140 m2
Land Area	1043 m2

Rachel Ryan 0433 774 501

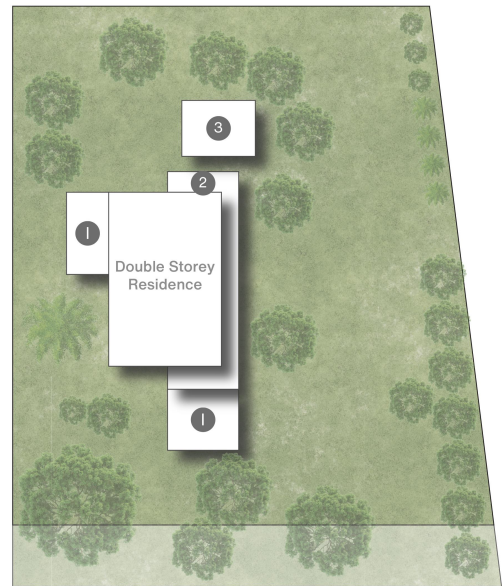
Sales Specialist | L.R.E.A | Independent Contractor |
rryan@ljhgc.com.au

LJ Hooker Tamborine Mountain (07) 5545 1500

Shop 1D/17-27 Main Western Road, TAMBORINE MOUNTAIN QLD
4272

tamborinemountain.ljhooker.com.au |
tamborinemountain@ljhgc.com.au





85 Kinabalu Drive TAMBORINE MOUNTAIN

3 | 2 | 3 | 224m²

LJ Hooker

Coomera Ormeau Tamborine Mountain

All dimensions are approximate; they are subject to errors and inaccuracies and no liability will be accepted. Plans are shown for marketing purposes only.

All information contained therein is gathered from relevant third parties sources.
We cannot guarantee or give any warranty about the information provided.
Interested parties must rely solely on their own enquiries.

LJ Hooker