



Tamborine Mountain, 75 Magnetic Drive

Endless Potential in Prime Tamborine Mountain Location

Offered to the market for the first time since its construction, this 3-bedroom home has been cherished by the same family and now awaits a new generation to make it their own. Set on a 1,019m² block, the property offers an opportunity for those looking to create their ideal home in the tranquil surroundings of Tamborine Mountain.

The home features a brick exterior and a tiled roof, offering durability and easy maintenance. Inside, the practical layout includes a separate living area, kitchen/dining space, laundry, bathroom, and a separate Laundry. Ducted air conditioning ensures year-round comfort, and the double garage and tool shed provide plenty of storage options.

Step outside to the patio and garden area, where there's room to enhance the outdoor space and perhaps even capture stunning Gold Coast views with some thoughtful landscaping. While the property does require some TLC, it presents a great opportunity for those looking to renovate and add value to a home with a rich history.



Disclaimer: All information contained therein is gathered from relevant third parties sources. We cannot guarantee or give any warranty about the information provided. Interested parties must rely solely on their own enquiries.



For Sale
Offers Over \$725,000

View
ljhooker.com.au/N9HZF

Contact
Garrett Rooney
0410715783
grooney@ljhgc.com.au

Rachel Ryan
0433 774 501
rryan@ljhgc.com.au

LJ Hooker Tamborine Mountain
(07) 5545 1500

Key Features:

- 3 spacious bedrooms
- Separate living area
- Kitchen/dining space
- Ducted air conditioning
- Bathroom + separate laundry
- Double garage with ample storage
- Tool shed
- Solid brick exterior with tiled roof
- Patio and garden area with potential for improvement
- 1,019m²; block
- Potential Gold Coast views with some clearing
- Year Built 2004 approximately

Conveniently located just 5.6 km from Gallery Walk and 17 km from the M1 motorway, this home provides the perfect mix of mountain serenity and easy access to the Gold Coast.

More About this Property

Property ID	N9HZF
Property Type	House
House Size	142 m ²
Land Area	1019 m ²
Including	Air Conditioning Ducted Cooling Ducted Heating Built-in-Robes Fully Fenced Remote Garage Grey Water System Water Tank

Garrett Rooney 0410715783

Sales Associate | grooney@ljhgc.com.au

Rachel Ryan 0433 774 501

Sales Specialist | L.R.E.A | Independent Contractor | rryan@ljhgc.com.au

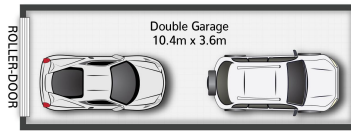
LJ Hooker Tamborine Mountain (07) 5545 1500

Shop 1D/17-27 Main Western Road, TAMBORINE MOUNTAIN QLD 4272
tamborinemountain.ljhooker.com.au | tamborinemountain@ljhgc.com.au

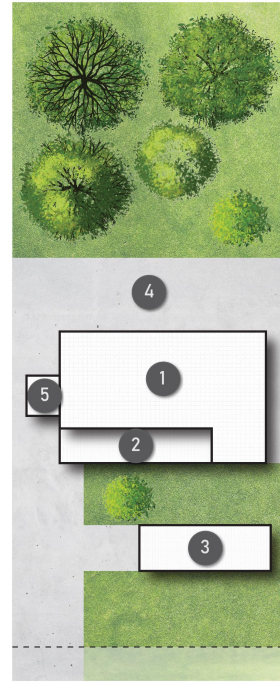


Disclaimer: All information contained therein is gathered from relevant third parties sources. We cannot guarantee or give any warranty about the information provided. Interested parties must rely solely on their own enquiries.

**LJ Hooker Tamborine Mountain
(07) 5545 1500**



(Not In Position)



LEGEND

- 1 RESIDENCE
- 2 COVERED
- 3 GARAGE
- 4 PATIO
- 5 SHED

Magnetic Drive



75 Magnetic Drive TAMBORINE MOUNTAIN

3 |
 1 |
 2 |
 342m²



All dimensions are approximate; they are subject to errors and inaccuracies and no liability will be accepted. Plans are shown for marketing purposes only.



LJ Hooker Tamborine Mountain
(07) 5545 1500

Disclaimer: All information contained therein is gathered from relevant third parties sources. We cannot guarantee or give any warranty about the information provided. Interested parties must rely solely on their own enquiries.