



## Tamborine Mountain, 14A-16A Coomera Gorge Drive

Mountain Escape with Sweeping Gold Coast Views

14A Coomera Gorge Drive, Tamborine Mountain

Set in a quiet and elevated position on the sought-after Coomera Gorge Drive, this renovated mountain retreat offers an unbeatable combination of warmth, charm, and breathtaking coastal views.

As you step inside, you are immediately welcomed by a sense of calm and comfort. The light-filled kitchen and dining area features a cosy wood-burning fireplace, creating the perfect space to relax during cool mountain evenings. Mounted electric heaters in both the master bedroom and living space add extra warmth for year-round comfort.

The stylish kitchen and open-plan dining area flow seamlessly to the expansive outdoor deck, a true highlight of this home, where you can soak up the spectacular, views across



**Disclaimer:** All information contained therein is gathered from relevant third parties sources. We cannot guarantee or give any warranty about the information provided. Interested parties must rely solely on their own enquiries.



**For Sale**  
Offers Over \$750,000

**View**  
By Appointment

**Contact**  
**Rachel Ryan**  
0433 774 501  
rryan@ljhg.com.au

**LJ Hooker Tamborine Mountain**  
**(07) 5545 1500**

the hinterland to the shimmering Gold Coast skyline. This is the perfect spot for morning coffee, entertaining friends, or unwinding at sunset with a glass of wine.

Offering a Master bedroom plus a dedicated office/bedroom + guest room. The master bedroom enjoys direct access to the main bathroom, while the laundry conveniently includes an extra toilet and sink, ideal for visitors or entertaining.

And for the ultimate in relaxation, the private spa lets you enjoy quiet, starlit nights surrounded by your own peaceful haven away from the world.

#### Property Features

- Fully renovated throughout
- Main bathroom off the master bedroom
- Office/bedroom + guest room
- Additional toilet and sink in the laundry
- Wood fireplace plus 2 mounted electric heaters
- Open-plan kitchen, dining, and living spaces
- Expansive outdoor deck with jaw-dropping Gold Coast views
- Outdoor spa - perfect for relaxing evenings
- Quiet, elevated location with serenity

Ideally positioned close to the heart of Tamborine Mountain, this home is just minutes from local cafes, restaurants, schools, and the famous Gallery Walk precinct, offering boutique shopping, and gourmet produce.

Whether you're searching for a weekend getaway, a peaceful downsizer, or a forever home that connects you to both nature and coastal convenience, 14A-16A Coomera Gorge Drive offers an enviable lifestyle in one of the Mountain's most desirable pockets.

## More About this Property

<b>Property ID</b>	PAHZF
<b>Property Type</b>	House
<b>Land Area</b>	961 m2

### Rachel Ryan 0433 774 501

Sales Specialist | L.R.E.A | Independent Contractor | rryan@ljhgc.com.au

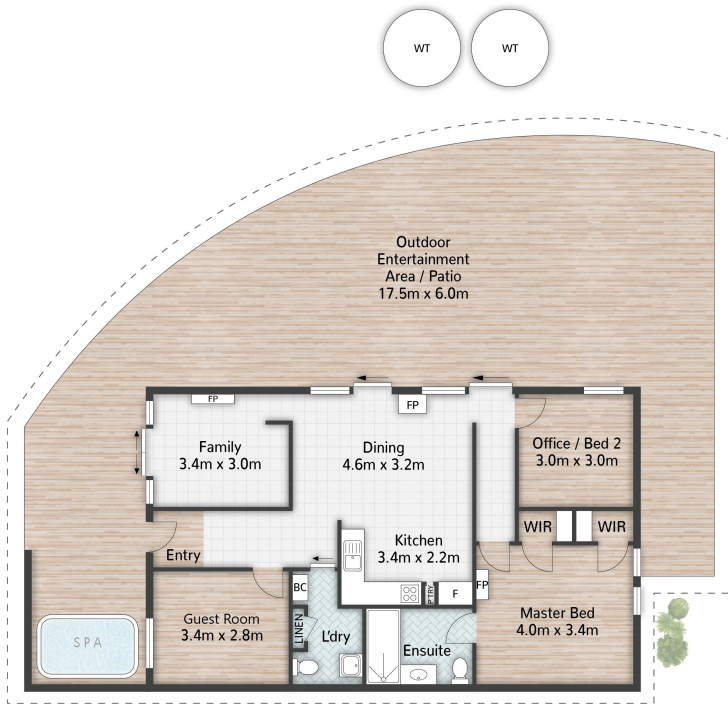
### LJ Hooker Tamborine Mountain (07) 5545 1500

Shop 1D/17-27 Main Western Road, TAMBORINE MOUNTAIN QLD 4272  
tamborinemountain.ljhooker.com.au | tamborinemountain@ljhgc.com.au

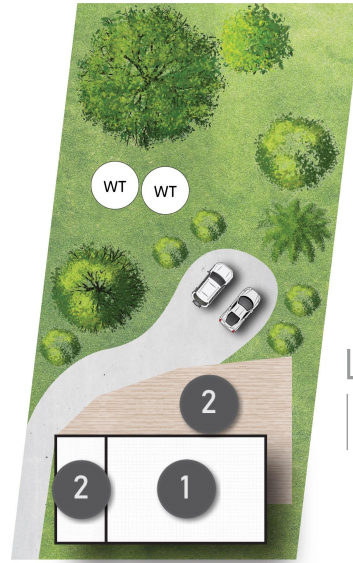


**LJ Hooker Tamborine Mountain  
(07) 5545 1500**

**Disclaimer:** All information contained therein is gathered from relevant third parties sources. We cannot guarantee or give any warranty about the information provided. Interested parties must rely solely on their own enquiries.



FLOOR PLAN



SITE PLAN

LEGEND  
1 RESIDENCE  
2 PATIO



14A Coomera Gorge Drive **TAMBORINE MOUNTAIN**

2 | 1 | 218m<sup>2</sup>

**LJ Hooker**

Coomera Ormeau Tamborine Mountain

All dimensions are approximate; they are subject to errors and inaccuracies and no liability will be accepted. Plans are shown for marketing purposes only.

**LJ Hooker**

**LJ Hooker Tamborine Mountain**  
**(07) 5545 1500**

**Disclaimer:** All information contained therein is gathered from relevant third parties sources. We cannot guarantee or give any warranty about the information provided. Interested parties must rely solely on their own enquiries.