



Tamborine Mountain, 11 Mayon Court

LEAFY HIDEAWAY IN PEACEFUL TAMBORINE COMMUNITY

Sitting in a beautifully peaceful corner of the tranquil Tamborine community, this pristine single-level home offers the ideal retreat for those seeking a tree-change. Welcoming you with a move-in ready interior amidst private, lush surrounds, you'll feel a million miles away from it all with the comfort that amenities are just five minutes away.

Sitting on a huge 1001m2 block, the home charms you immediately with a wrap-around verandah providing the perfect homely welcome. A large open-plan layout boasts light-filled living and dining with a wood burning fireplace ready to hug you on cold winter nights. Accentuated by black hardware, white cabinetry wraps around the spacious kitchen with plenty of storage complemented by a feature glass splash back. There are quality appliances on offer as well as generous bench space for easy catering.

Glorious natural light dapples into the huge sunroom with the massive enclosed zone



Disclaimer: All information contained therein is gathered from relevant third parties sources. We cannot guarantee or give any warranty about the information provided. Interested parties must rely solely on their own enquiries.

3

1

3

For Sale
Offers Over \$835,000

View
ljhooker.com.au/KSHZF

Contact
Rachel Ryan
0433 774 501
rryan@ljhgc.com.au

Garrett Rooney
0410715783
grooney@ljhgc.com.au

LJ Hooker Tamborine Mountain
(07) 5545 1500

offering a true all-weather option to extend your living and dining. Perfect for easy lounging and soaking up the warmth with a coffee, it is sized brilliantly so you can host large groups if desired.

You have the option of having relaxing amidst cooling breezes and views of your private paradise with the verandah wrapping around to an alfresco entertaining option on the other side of the house. Spilling into the lush backyard, there is endless space for children and pets to frolic amongst large open grassed zones and lush mature greenery.

Each of the three bedrooms have cozy carpet and built-in storage with impeccable service by the stylish main bathroom; well-appointed with floor to ceiling tiling and a large glass shower. Additional features of this charming home include a separate laundry with cabinetry, garden shed, additional large shed with single roller door, tandem carport and gated driveway.

Blissful in every way, this location delivers the peace and quiet you've been craving whilst still ensuring easy access to amenities. Shops and schools are a short scenic drive away whilst you can spend your weekends exploring the famous Tamborine Village or abundant walking tracks!

- 1001m2 block
- Lush, private setting with mature greenery and whimsical charm
- Open-plan living and dining with timber-styled flooring and fireplace
- Impressive kitchen including glass splash back, generous cabinetry and quality appliances
- Huge sun room boasting all-weather entertaining or additional living space
- Wrap-around verandah plus alfresco entertaining spilling into, lush backyard
- Three built-in bedrooms with carpet
- Contemporary bathroom including floor to ceiling tiling and large glass shower
- Separate laundry with cabinetry
- Garden shed plus additional large shed with single roller door
- Tandem carport with gated driveway
- Schools, amenities and dining just five minutes away

More About this Property

Property ID	KSHZF
Property Type	House
Land Area	1001 m ²

Rachel Ryan 0433 774 501

Sales Specialist | L.R.E.A | Independent Contractor | rryan@ljhgc.com.au

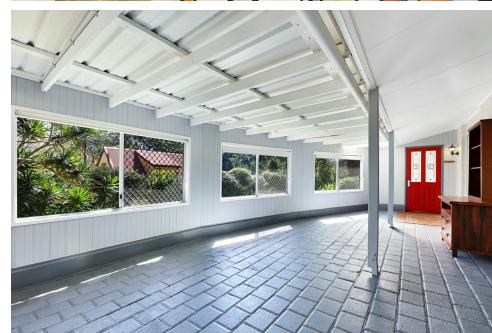
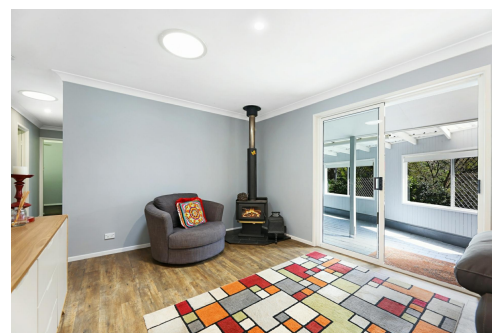
Garrett Rooney 0410715783

Sales Associate | grooney@ljhgc.com.au

LJ Hooker Tamborine Mountain (07) 5545 1500

Shop 1D/17-27 Main Western Road, TAMBORINE MOUNTAIN QLD 4272

tamborinemountain.ljhooker.com.au | tamborinemountain@ljhgc.com.au



Disclaimer: All information contained therein is gathered from relevant third parties sources. We cannot guarantee or give any warranty about the information provided. Interested parties must rely solely on their own enquiries.

**LJ Hooker Tamborine Mountain
(07) 5545 1500**



11 Mayon Court **TAMBORINE MOUNTAIN**



3 | 1 | 2 | 190m²

All dimensions are approximate; they are subject to errors and inaccuracies and no liability will be accepted. Plans are shown for marketing purposes only.



LJ Hooker Tamborine Mountain
(07) 5545 1500

Disclaimer: All information contained therein is gathered from relevant third parties sources. We cannot guarantee or give any warranty about the information provided. Interested parties must rely solely on their own enquiries.