



Tallebudgera Valley, 421 Petsch Creek Road

Dress circle family living - Private acreage retreat

Discover an exquisite blend of elegance and tranquility with this stunning double-storey country abode, perfectly positioned on a lush 7.4 acre estate. This gem marries classic charm with contemporary style, offering a serene escape while maintaining modern conveniences.

Your charming acreage home is draped in nature for a private existence. Sitting pretty in a private location, this home captures an abundance of natural light, year-round breezes and is still close to everything you could possibly need.

Imagine sitting back on your sun-drenched deck, gazing out over a sea of green. From this serene vantage point, you can watch as the kids run freely across their very own private piece of acreage, creating memories in their expansive, natural playground. The tranquility of the countryside, combined with the boundless freedom of your own land, makes every moment here a cherished experience.

This exceptional property offers a unique lifestyle opportunity combining peace, serenity,



For Sale
Contact Agent

View
By Appointment

Contact
David Lonie
0432 349 839
david@ljhookersgc.com.au

LJ Hooker

Disclaimer: All information contained therein is gathered from relevant third parties sources. We cannot guarantee or give any warranty about the information provided. Interested parties must rely solely on their own enquiries.

LJ Hooker Southern Gold Coast
(07) 5534 4033

and convenience for the entire family.

Also offering

- Your expansive lower level seamlessly integrates a spacious lounge, dining area, and kitchen. Stylish VJ feature walls, blackbutt timber flooring, and large-scale windows flood the space with natural light and frame the picturesque acreage views.
- Cook in style with granite benchtops, a 900mm oven, and stove top. Enjoy garden and pool views while preparing meals, and benefit from a walk-in pantry for additional storage.
- Located on the ground floor for added privacy, your luxurious master suite features a walk-in robe and a sophisticated ensuite with a fluted glass shower, a relaxing bath, and a floating dual vanity crafted from blackbutt timber.
- Four more spacious bedrooms are available, one of which can be repurposed as a media room. Three of these bedrooms come with built-in robes.
- A dedicated office space with a barn door entry ensures a quiet and private workspace.
- Both the main bathroom and the ensuite boast contemporary finishes, including fluted glass shower screens, stylish vanities, and baths. An additional powder room is conveniently located near the laundry.
- 14m x 10.5m American barn-style shed with 3 phase power offering extensive storage options and includes a dedicated store room.
- Three water tanks with a filtration system, a 10kW three-phase solar system, and new plumbing and electrical work ensure sustainability and efficiency.
- Security system and Satellite NBN for keeping you connected and secure.
- Set against the serene backdrop of Both Valleys Reserve and Tally Waterfalls, encircled by lush bushland
- This property is fully fenced and features plenty of space for the kids and pets to play. Citrus and mulberry trees add to the charm of the lush landscape.
- Approximately 11 minutes to Tallebudgera State School and St. Andrews Lutheran College
- Close to Burleigh heads shops, beaches and eateries, and a short drive to Palm Beach, Burleigh Heads, and Currumbin Beach.
- Approximately 1 hour to Brisbane and Byron Bay

This exceptional property invites you to experience the perfect blend of historical significance and modern living, offering a serene escape within the heart of Tallebudgera Valley. Don't miss the chance to make this valley Estate your own-arrange a visit today and step into a piece of paradise.

Disclaimer:

All information (including but not limited to the property area, floor size, price, address and general property description) is provided as a convenience to you, and has been provided to LJ Hooker by third parties. LJ Hooker is unable to definitively confirm whether the information listed is correct or 100% accurate. LJ Hooker does not accept any liability (direct or indirect) for any injury, loss, claim, damage or any incidental or consequential damages, including but not limited to lost profits or savings, arising out of or in any way connected with the use of any information, or any error, omission or defect in the information, contained on the Website. Information contained on the Website should not be relied upon and you should make your own enquiries and seek legal advice in respect of any property on the Website. Prices displayed on the Website are current at the time of issue, but may change.

LJ Hooker

**LJ Hooker Southern Gold Coast
(07) 5534 4033**

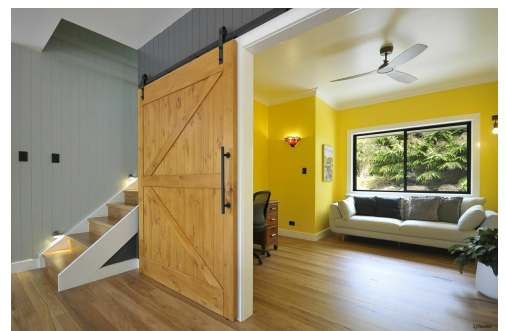
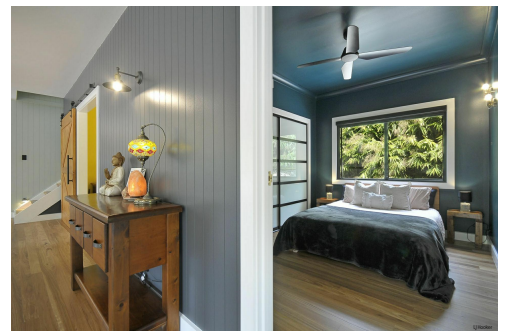
Disclaimer: All information contained therein is gathered from relevant third parties sources. We cannot guarantee or give any warranty about the information provided. Interested parties must rely solely on their own enquiries.

More About this Property

Property ID	1TBGF47
Property Type	AcreageSemi-rural
Land Area	3 hectare
Including	Ducted Cooling Evaporative Cooling Pool Deck Outdoor Entertaining Floorboards Built-in-Robes Secure Parking Fully Fenced Liveability

David Lonie 0432 349 839
Sales & Marketing Specialist | david@ljhookersgc.com.au

LJ Hooker Southern Gold Coast (07) 5534 4033
Shop 2, 10 Fifth Avenue, PALM BEACH QLD 4221
southerngoldcoast.ljhooker.com.au | enquiries@ljhookersgc.com.au



LJ Hooker

Disclaimer: All information contained therein is gathered from relevant third parties sources. We cannot guarantee or give any warranty about the information provided. Interested parties must rely solely on their own enquiries.

**LJ Hooker Southern Gold Coast
(07) 5534 4033**