



## Takaro, 7 Liverpool Street

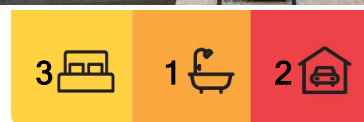
### The Full Package - Deck, Garage & Family Comfort!

Beautifully presented home set on a secure 675m<sup>2</sup> (more or less) section, this inviting home blends 1960's charm with modern decor. With its freshly repainted exterior and great street presence, it's a place you'll be proud to call home.

Step inside to find a warm and welcoming layout designed for family living. The spacious lounge is the perfect place to unwind, while the sun-soaked dining area flows effortlessly from the well-appointed kitchen. French doors open out to an expansive deck, ideal for entertaining.

Three double bedrooms offer good storage, and the tidy bathroom features a brand new shower, with the bonus of a separate toilet and laundry room. A heat pump, wood burner, and Smart Vent system keep things cosy all year round.

Step outside and enjoy a fully fenced backyard, providing a safe haven for children and



#### For Sale

Offers Over \$579,000+

#### View

By Appointment

#### Contact

**Angela Martin**

027 739 3370

angela.martin@ljhookerpn.co.nz



**Disclaimer:** All information contained therein is gathered from relevant third parties sources. We cannot guarantee or give any warranty about the information provided. Interested parties must rely solely on their own enquiries.

**LJ Hooker Palmerston North**  
(06) 358 9009  
Manawatu (1994) Ltd



pets. The expansive deck offers the perfect space for gatherings with family and friends, while front fence looks smart and enhanced security.

For the hobbyist or those needing extra storage, the double garage with an attached workshop/storage room is a real bonus, along with ample off-street parking for multiple vehicles.

Conveniently located just a short stroll to the local dairy and public transport, and with easy access to the city centre. Zoned for Central Normal School, this home is a solid choice for families, first home buyers, families or those looking for a great investment.

Viewing is essential!

## More About this Property

Property ID	WHTGFB
Property Type	House
House Size	123 m2
Land Area	675 m2
Licensed Real Estate Agents (REAA2008)	

**Angela Martin 027 739 3370**

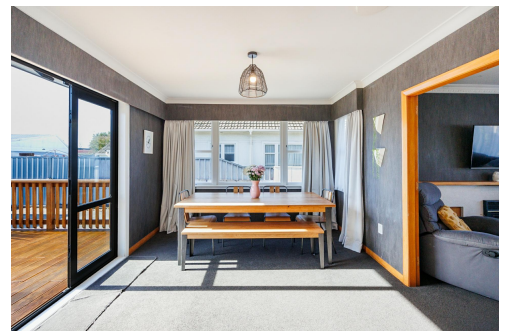
Residential & Lifestyle Sales Specialist | [angela.martin@ljhookerpn.co.nz](mailto:angela.martin@ljhookerpn.co.nz)

**LJ Hooker Palmerston North (06) 358 9009**

Manawatu (1994) Ltd

219 Broadway Avenue, PALMERSTON NORTH 4414

[palmerstonnorth.ljhooker.co.nz](mailto:palmerstonnorth.ljhooker.co.nz) | [reception@ljhookerpn.co.nz](mailto:reception@ljhookerpn.co.nz)



**Disclaimer:** All information contained therein is gathered from relevant third parties sources. We cannot guarantee or give any warranty about the information provided. Interested parties must rely solely on their own enquiries.

**LJ Hooker Palmerston North**  
**(06) 358 9009**  
Manawatu (1994) Ltd