

Tainui, 33 Norman Street

Estate Sale - Oozing With Potential

Discover the charm and endless potential of this solid brick home, nestled in the heart of Tainui. Featuring 2 to 3 bedrooms and separate living spaces, this property is in its original condition, offering a fantastic opportunity for renovators or first-home buyers to add value. Situated on an elevated, sunny section, the home enjoys plenty of natural light and a commanding outlook. Situated in close proximity to local schools, St Kilda beach and Chisholm Park Golf Links.

The large basement garage with an expansive workshop area provides ample space for storage, hobbies, or a home project.

As an estate sale, this property presents a unique chance to secure a prime piece of real estate in a highly sought-after location. With plenty of room to modernise and make it your own, this is one opportunity you won't want to miss.





For Sale
Set Sale

View
ljhooker.co.nz/3NTAGDS

Contact
Geraldine Hermens
027 473 0922
Geraldine@ljhdunedin.co.nz

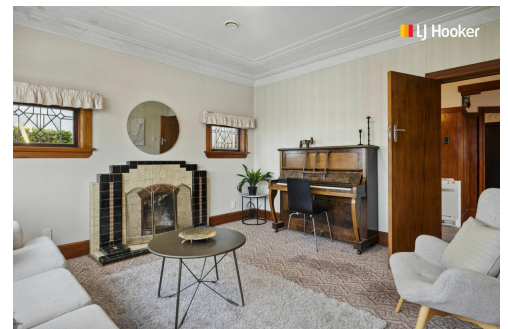
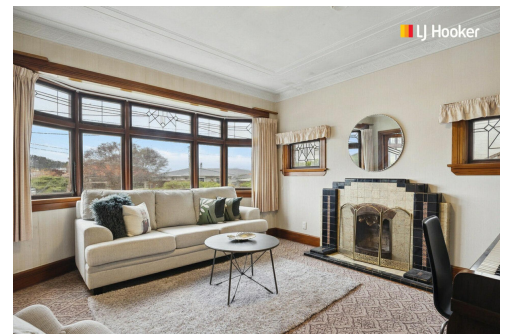
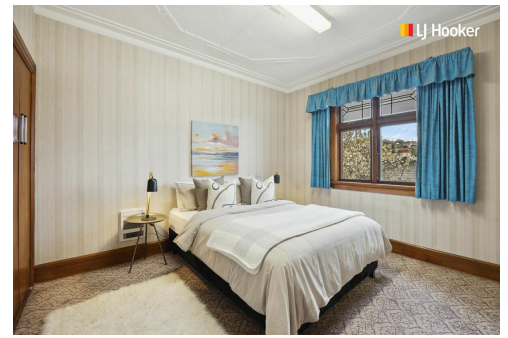
Amelia Hermens
022 415 2359
amelia@ljhdunedin.co.nz

More About this Property

Property ID	3NTAGDS
Property Type	House
House Size	180 m ²
Land Area	620 m ²
Licensed Real Estate Agents (REAA2008)	

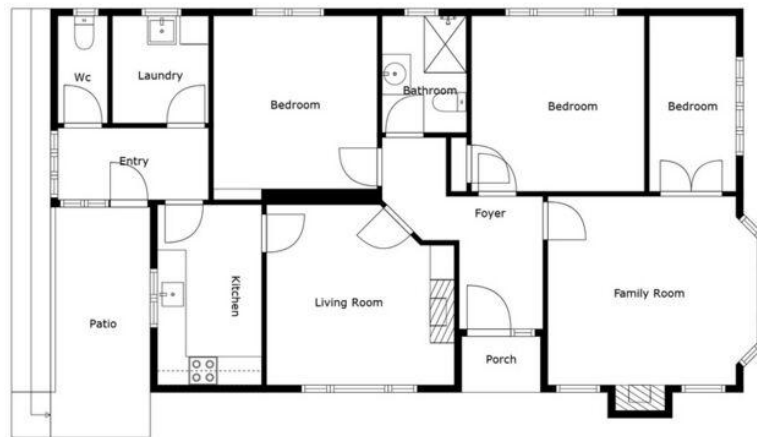
Geraldine Hermens 027 473 0922
Licensee | Geraldine@ljhdunedin.co.nz
Amelia Hermens 022 415 2359
Licensee | amelia@ljhdunedin.co.nz

LJ Hooker Dunedin (03) 470 1370
Wayne Graham Realty Ltd
63 Musselburgh Rise, DUNEDIN 9013
dunedin.ljhooker.co.nz | dunedin@ljhdunedin.co.nz

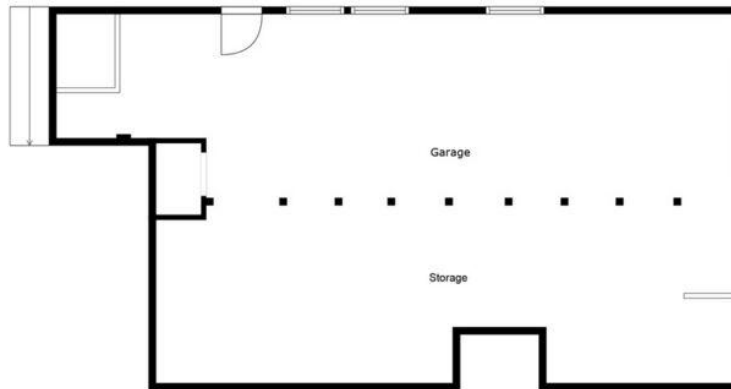


LJ Hooker Dunedin
(03) 470 1370
Wayne Graham Realty Ltd

Disclaimer: All information contained therein is gathered from relevant third parties sources.
We cannot guarantee or give any warranty about the information provided. Interested parties must rely solely on their own enquiries.



Floor 2



Floor 1

Sizes And Dimensions Are Approximate, Actual May Vary