

Tailem Bend, 8A George Street

Sold by Luke Mitchell Of LJ Hooker Adelaide Metro

Sold by Luke Mitchell of LJ Hooker Adelaide Metro

A perfect blend of modern living and outdoor enjoyment, ideal for first home buyers, investors, and downsizers looking for a hassle-free lifestyle!

This home features three generous sized bedrooms, providing ample space for comfort and flexibility. The master bedroom features built-in robes, split system a/c, wall mounted heater, ceiling fan and its own toilet, ensuring added convenience and privacy. Bedroom 2 & 3 are both complete with built-in robes & wall mounted heaters. Both bedrooms are serviced by the family bathroom and adjoining laundry.

The large kitchen overlooks the garden, offering plenty of storage space and designed to handle everything from quick meals to dinner parties effortlessly. The family/meals area is adjacent to the kitchen flowing to the outdoor entertaining area.



Disclaimer: All information contained therein is gathered from relevant third parties sources. We cannot guarantee or give any warranty about the information provided. Interested parties must rely solely on their own enquiries.



For Sale
Under Contract

View
ljhooker.com.au/2C5UFDZ

Contact
Luke Mitchell
0411 703 055
luke.mitchell@ljhadelaidemetro.com.au

LJ Hooker St Peters
(08) 8362 8008

Step outside to discover an entertainer's paradise with an expansive undercover deck, perfect for year-round gatherings.

The paved entertaining area seamlessly connects your indoor and outdoor spaces, making it ideal for hosting friends and family. The multipurpose rear yard is a green thumbs dream, featuring garden beds, a greenhouse, multiple sheds for storage or projects, and a chicken run that can be separated for convenience.

The secure garage, ensures your vehicle is safe and protected from the elements, and solar panels add a layer of convenience that provide energy efficiency and cost savings.

Tailem Bend offers a friendly community atmosphere with all the conveniences you need close by. Enjoy easy access to local shops, schools, and recreational facilities, all within a peaceful suburban setting.

Located just a 7-minute drive from the famous Bend Motorsport Park, this property is perfect for motorsport enthusiasts alike!

What we love:

- 3 good size bedrooms
- Master bedroom with private toilet
- Secure lock-up garage
- Large outdoor sealed entertaining deck
- Split system a/c in lounge, bed 1 & bed 3
- Solar panel system
- Two large sheds & green shed
- Chicken run with ability to separate

Don't miss this opportunity to secure a fantastic property in a great location.

You can't be too early to ring but you can be too late to inspect, schedule your viewing today!

Purchasing this property as an investment? Talk with Kirsty Clark from our PM team and see why our Property Management department is #1 amongst all the LJ Hooker offices Worldwide.

****** All information provided has been obtained from sources we believe to be accurate, however, we cannot guarantee the information is accurate and we accept no liability for any errors or omissions (including but not limited to a property's land size, floor plans and size, building age and condition). Interested parties should make their own enquiries and obtain their own legal advice.

RLA 61345 RLA 282965 RLA 231015



LJ Hooker St Peters
(08) 8362 8008

Disclaimer: All information contained therein is gathered from relevant third parties sources. We cannot guarantee or give any warranty about the information provided. Interested parties must rely solely on their own enquiries.

More About this Property

Property ID	2C5UFDZ
Property Type	House
Including	Toilets (2)

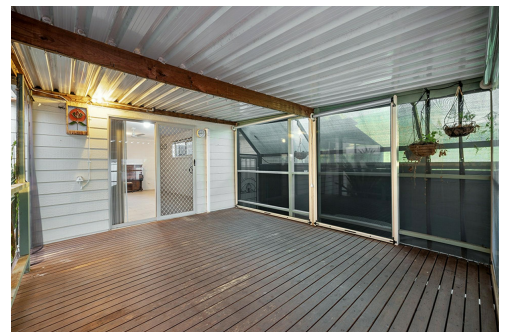
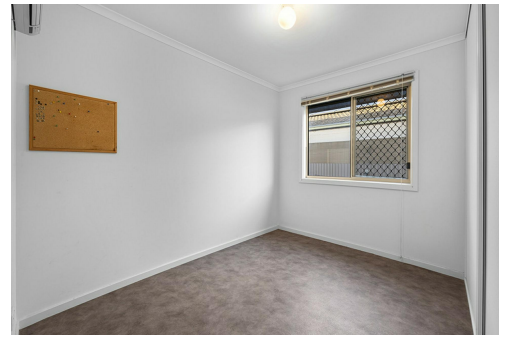
Luke Mitchell 0411 703 055

Sales Consultant | luke.mitchell@ljhadelaidemetro.com.au

LJ Hooker St Peters (08) 8362 8008

2a Portrush Road, PAYNEHAM SA 5070

stpeters.ljhooker.com.au | stpeters@ljhadelaidemetro.com.au



Disclaimer: All information contained therein is gathered from relevant third parties sources.
We cannot guarantee or give any warranty about the information provided. Interested parties must rely solely on their own enquiries.

LJ Hooker St Peters
(08) 8362 8008



8A GEORGE STREET, TAILEM BEND

APPROXIMATE DIMENSIONS	
LIVING:	94.5m ²
GARAGE:	16.8m ²
VERANDAH:	19.6m ²
PORCH/PATIO:	45.3m ²
SHED/CHICKEN COOP:	43.2m ²
PERGOLA:	107.5m ²
GREEN HOUSE:	24.8m ²
TOTAL:	351.7m ²

DISCLAIMER

PLANS SHOWN ARE FOR MARKETING PURPOSES ONLY. ALL DIMENSIONS ARE APPROXIMATE AND NOT TO SCALE. THEY ARE SUBJECT TO ERRORS AND INACCURACIES AND NO LIABILITY WILL BE ACCEPTED. INTERESTED PARTIES SHOULD MAKE THEIR OWN ENQUIRIES.



IMAGES AND FLOORPLAN BY:
IN-HOUSE
IMAGING
inhouseimaging.com.au