

Tahmoor, 29 Thirlmere Way

Quality Large Family Home on 1012m²

Unique and difficult to find, large home with 6 bedrooms and 4 living spaces in excellent condition at an affordable price, this property oozes opportunity to tailor to your specifications. The property is perfect for a large family or the separate studio room (5.8 x 5.8m) is ideal for home office or large storage with side access for trades and vehicles to backyard.

The concrete inground pool is surrounded by Merbau decking overlooking the back yard and gardens and ideally located to the far left of the yard maximising space.

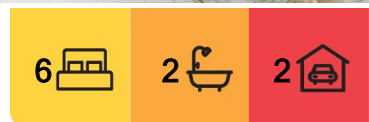
Positioned on a large $\frac{1}{4}$ acre lot (1012m²) and walking distance to shops and train station, the long-term opportunities are abundant.

Features Include:

- 6 bedrooms, walk-in and ensuite to master bedroom
- 4 Living areas, 7.1 x 4.7m lounge, Dining, Family, Sunroom
- Large undercover alfresco 3.2m x 11.1m, Built in BBQ



Disclaimer: All information contained therein is gathered from relevant third parties sources. We cannot guarantee or give any warranty about the information provided. Interested parties must rely solely on their own enquiries.



For Sale
\$1,050,000

View
l.jhooker.com.au/45WHV8

Contact
Malcolm McEachern
0401 997 700
mal.mceachern@l.jhooker.com.au
Melika McEachern
0476 394 323
melika.mceachern@l.jhooker.com.au

LJ Hooker Picton
(02) 4677 3441

- Separate studio building 5.8 x 5.8m
- Concrete in-ground pool, stunning Merbau decking
- Combustion fireplace, Modern fans, split system air-conditioning
- Large entrance entry/foyer area
- Large 2 car garage
- Side access to rear yard studio or potential shedding

Proximity to the thriving township of Tahmoor includes major shopping precinct, medical facilities, schools, and train station. Only minutes from the historic township of Picton and a short drive the Bowral, you have the diverse and tranquil country style living so many wish for, view the attached short video about Tahmoor for more information.

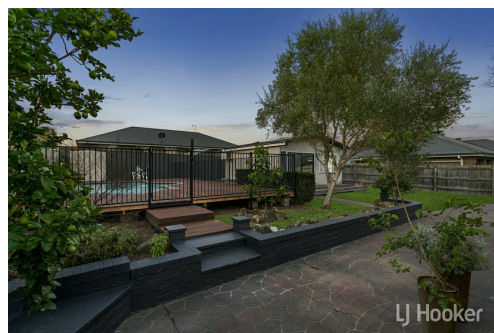
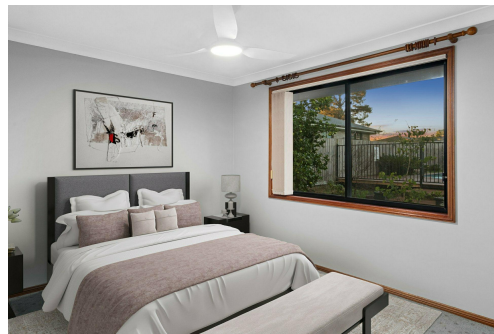
Disclaimer: Hooker Picton have supplied the above information to promote and assist in the marketing, LJ Hooker Picton encourage all potential buyers to research and seek professional advice prior to purchasing. LJ Hooker Picton cannot guarantee the accuracy of the information provided and cannot accept any responsibility for loss or damages.

More About this Property

Property ID	45WHV8
Property Type	House
Land Area	1012 m²

Malcolm McEachern 0401 997 700
 Director | Principal | mal.mceachern@ljhooker.com.au
Melika McEachern 0476 394 323
 Director | melika.mceachern@ljhooker.com.au

LJ Hooker Picton (02) 4677 3441
 Suite 20, 150-158 Argyle Street, PICTON NSW 2571
 picton.ljhooker.com.au | picton@ljhooker.com.au



Disclaimer: All information contained therein is gathered from relevant third parties sources. We cannot guarantee or give any warranty about the information provided. Interested parties must rely solely on their own enquiries.

LJ Hooker Picton
(02) 4677 3441