

7 Cassilis Road, Swifts Creek




IN THE HEART OF SWIFTS CREEK

Looking for an amazing opportunity to invest in the community of Swifts Creek? Look no further than this charming weather board located in the heart of town! Omeo is just 20 minutes up the road which is the gateway of the Alpine National park and ski fields of Mt Hotham & Dinner Plain.

With a huge 2882sqm allotment, this property offers an incredible opportunity for development (STCA). The township zone lends itself to many avenues, making it perfect for a range of different projects. And with dual access from Cassilis Road and Antonoff Road, you'll have plenty of flexibility in how you approach your plans.

But this property isn't just about development potential - it also offers a lot of history and charm. Previously an old bush nurse home with a lovely deck to enjoy the surrounds, it features 3 bedrooms and a range of amenities that make it perfect for comfortable living. There's a gas cooktop and electric oven, a wood heater in the separate lounge, and split system heating and cooling to keep you comfortable no matter the weather.

On an elevated allotment, one of the standout features of this property is the lovely rural views over the rolling mountains that surround Swifts Creek. Tinker away in the 12 x 6 m approx shed with a concrete floor - perfect for hobbies, storage or work.

3  1  1 

FOR SALE

Please Call

AGENTS

Kelly Quirke

0427 064 816

kquirke@ljhookerbairnsdale.com.au

AGENCY

LJ Hooker Bairnsdale

(03) 5152 4172

All information contained therein is gathered from relevant third parties sources.
We cannot guarantee or give any warranty about the information provided.
Interested parties must rely solely on their own enquiries.

 LJ Hooker

But that's not all - this property is being sold on a walk-in, walk-out basis, which means you'll get many inclusions such as household furniture and some larger items for the shed. So if you're looking for a charming property with plenty of potential, don't miss your chance to check out this incredible opportunity in Swifts Creek!

MORE DETAILS

Property ID	158PFBF
Property Type	House
Land Area	2882 m2
Including	Air Conditioning
	Toilets (1)
	Balcony
	Workshop
	Fully Fenced

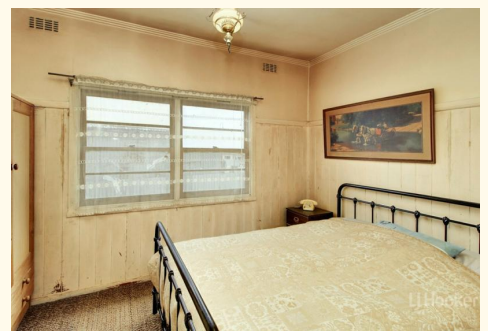
Kelly Quirke 0427 064 816

Sales Consultant | kquirke@ljhookerbairnsdale.com.au

LJ Hooker Bairnsdale (03) 5152 4172

195 Main Street, BAIRNSDALE VIC 3875

bairnsdale.ljhooker.com.au | bairnsdale@ljhookerbairnsdale.com.au



7 Cassilis Road, Swifts Creek



This floor plan including furniture, fixture measurements and dimensions are approximate and for illustrative purposes only. BoxBrownie.com gives no guarantee, warranty or representation as to the accuracy and layout. All enquiries must be directed to the agent, vendor or party representing this floor plan.

