

## Sussex Inlet, Unit 5/50 Jacobs Drive

This is Waterfront Living!

Located in a prime position in the exclusive Moorings complex, this three-bedroom townhouse is sure to impress. This summer, get ready to sit back, relax and spend your days enjoying the superb water views.

### Downstairs

- Spacious kitchen overlooks the living and dining areas, all taking full advantage of the setting with water views through the large glass doors & windows.
- Enclosed sunroom.
- Single garage with internal access.
- Powder room + Laundry.

### Upstairs

- Three good sized bedrooms with built-ins, main with ensuite.
- Main bathroom.



**Disclaimer:** All information contained therein is gathered from relevant third parties sources. We cannot guarantee or give any warranty about the information provided. Interested parties must rely solely on their own enquiries.

3

2

1

**For Sale**  
Please Call

**View**  
[ljhooker.com.au/PJRFAY](http://ljhooker.com.au/PJRFAY)

**Contact**  
**Unity Naismith**  
0421 715 899  
[unaismith.sussexinlet@ljhooker.com.au](mailto:unaismith.sussexinlet@ljhooker.com.au)

**John Naismith**  
0475 362 647  
[jnaismith.sussexinlet@ljhooker.com.au](mailto:jnaismith.sussexinlet@ljhooker.com.au)

**LJ Hooker Sussex Inlet**  
**(02) 4441 2135**



- Home office / study with wide water views.

It is only a short boat trip to St Georges Basin for a great days fishing, or head in the other direction and you can access the ocean.

Take advantage of the perks of the Moorings complex including:

- Access to three shared jetties.
- An on complex boat ramp.
- Pool and spa.
- Tennis Court.
- The Captains Club Cabana area.

Low maintenance homes like this are hard to come by, so if you want to relocate to enjoy the best of Sussex Inlet, don't miss viewing this home.

## More About this Property

<b>Property ID</b>	PJRFAY
<b>Property Type</b>	Townhouse
<b>Land Area</b>	261.8 m2
<b>Including</b>	Toilets (3)

### Unity Naismith 0421 715 899

Salesperson | [unaismith.sussexinlet@ljhooker.com.au](mailto:unaismith.sussexinlet@ljhooker.com.au)

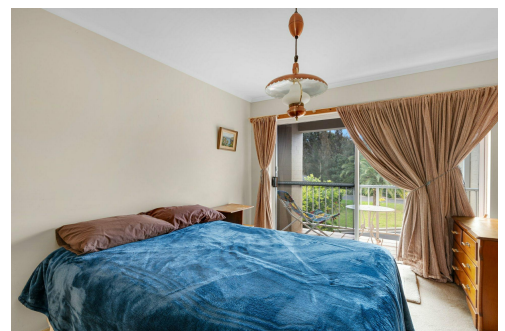
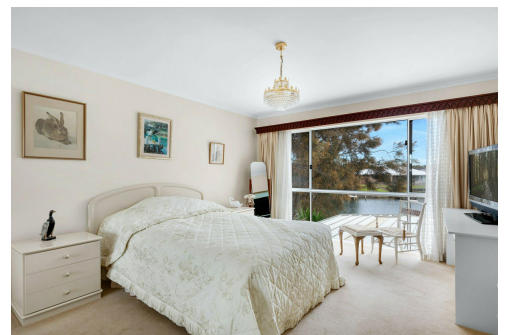
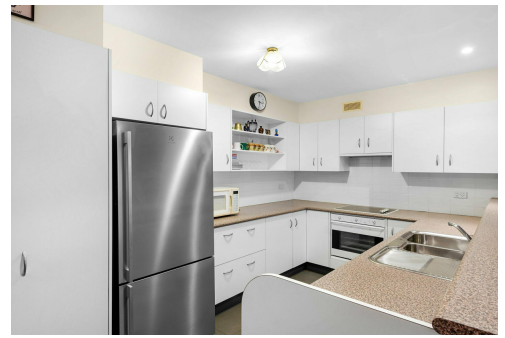
### John Naismith 0475 362 647

Salesperson | [jnaismith.sussexinlet@ljhooker.com.au](mailto:jnaismith.sussexinlet@ljhooker.com.au)

### LJ Hooker Sussex Inlet (02) 4441 2135

1/159 Jacobs Drive, SUSSEX INLET NSW 2540

[sussexinlet.ljhooker.com.au](mailto:sussexinlet.ljhooker.com.au) | [sussexinlet@ljhooker.com.au](mailto:sussexinlet@ljhooker.com.au)



**Disclaimer:** All information contained therein is gathered from relevant third parties sources. We cannot guarantee or give any warranty about the information provided. Interested parties must rely solely on their own enquiries.

**LJ Hooker Sussex Inlet**  
(02) 4441 2135



Scale in meters. Indicative only. Dimensions are approximate. All information contained herein is gathered from sources we believe to be reliable. However we cannot guarantee its accuracy and interested persons should rely on their own enquiries.

5/50 Jacobs Drive, Sussex Inlet

