



Sussex Inlet, 9 Whimbrel Drive

Sussex Inlet Waterfront Oasis

Embrace waterfront living with this four-bedroom brick and tile home nestled in the heart of Sussex Inlet.

Step into spacious open plan living, abundant with natural light and enhanced with captivating vistas of the shimmering water.

Entertain with ease on the lovely sunny deck, perfect for lazy brunches or sunset drinks against the backdrop of the tranquil waterways.

Boasting breathtaking water views from the main bedroom, this property offers a picturesque sanctuary for those seeking the ultimate coastal lifestyle.

A private jetty awaits, offering direct access to endless aquatic adventures while the established gardens compliment the backyard.

Experience year-round comfort with two air conditioning units.

Don't miss this opportunity to make waterfront living your reality. Contact John or Unity to schedule your private viewing.

4

3

2

For Sale
\$1,399,000

View
ljhooker.com.au/PGAFAY

Contact
Unity Naismith
0421 715 899
unaismith.sussexinlet@ljhooker.com.au

John Naismith
0475 362 647
jnaismith.sussexinlet@ljhooker.com.au



Disclaimer: All information contained therein is gathered from relevant third parties sources. We cannot guarantee or give any warranty about the information provided. Interested parties must rely solely on their own enquiries.

LJ Hooker Sussex Inlet
(02) 4441 2135

More About this Property

Property ID	PGAFAY
Property Type	House
Land Area	664 m2
Including	Air Conditioning Toilets (3) Deck Dishwasher Built-in-Robes Secure Parking Remote Garage

Unity Naismith 0421 715 899

Salesperson | unaismith.sussexinlet@ljhooker.com.au

John Naismith 0475 362 647

Salesperson | jnaismith.sussexinlet@ljhooker.com.au

LJ Hooker Sussex Inlet (02) 4441 2135

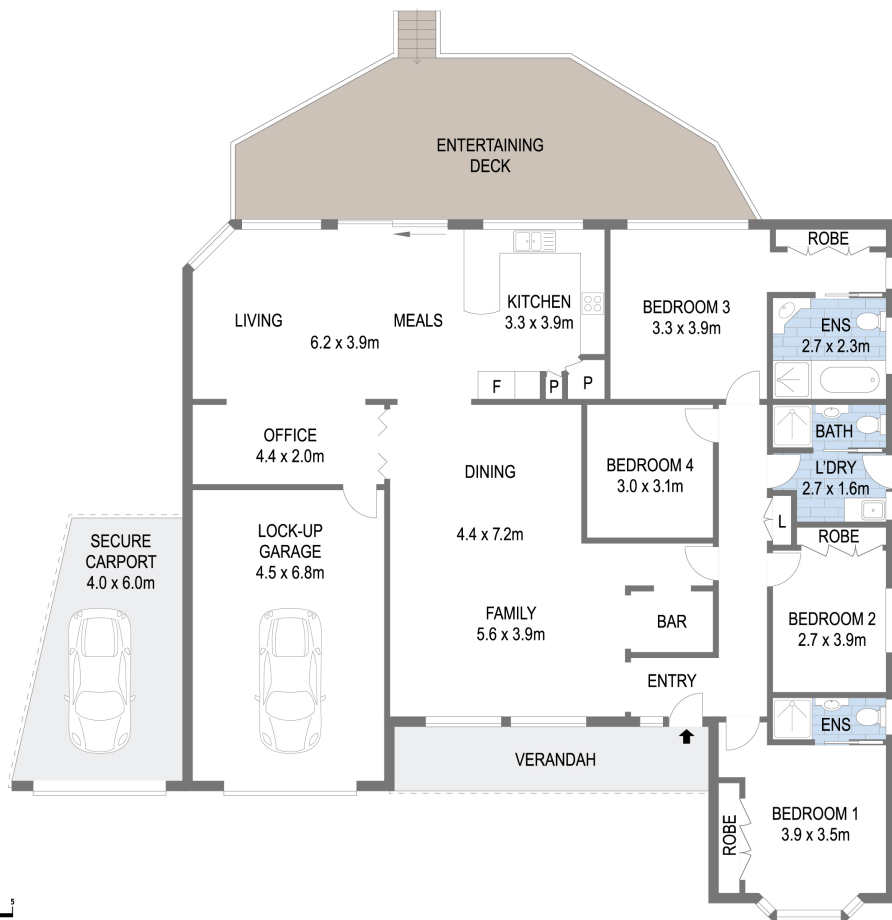
1/159 Jacobs Drive, SUSSEX INLET NSW 2540

sussexinlet.ljhooker.com.au | sussexinlet@ljhooker.com.au



Disclaimer: All information contained therein is gathered from relevant third parties sources. We cannot guarantee or give any warranty about the information provided. Interested parties must rely solely on their own enquiries.

LJ Hooker Sussex Inlet
(02) 4441 2135



Scale in metres. Indicative only. Dimensions are approximate. All information contained herein is gathered from sources we believe to be reliable. However we cannot guarantee its accuracy and interested persons should rely on their own enquiries

9 Whimbrel Drive, Sussex Inlet



LJ Hooker Sussex Inlet
(02) 4441 2135

Disclaimer: All information contained therein is gathered from relevant third parties sources. We cannot guarantee or give any warranty about the information provided. Interested parties must rely solely on their own enquiries.