



3 Plover Close, Sussex Inlet

Waterfront Living at Its Finest

Nestled in a quiet cul-de-sac, this beautifully appointed four bedroom home offers an exceptional waterfront lifestyle with stunning views and modern comfort.

Step inside to discover a spacious, open-plan layout designed to capture the serenity of the water at every turn. The heart of the home is the light-filled kitchen, complete with a walk-in pantry and striking window splashback. Flowing seamlessly into the main living area, this space opens onto a generous back deck, the perfect spot to relax or entertain while soaking in the tranquil outlook.

The main bedroom is thoughtfully positioned on the water side and features sliding doors to the deck, a walk-in robe and a private ensuite. Additional features include a separate media room, ducted air conditioning throughout, and a double garage with internal access for added convenience. Outside, the property also boasts side access and a private slipway, making it ideal for those who love boating and waterfront activities.

This home offers peaceful waterfront living without compromising on space, style or practicality.

Key Features:

All information contained therein is gathered from relevant third parties sources. We cannot guarantee or give any warranty about the information provided. Interested parties must rely solely on their own enquiries.

4 🏠 2 🛶 2 🚗

FOR SALE

Please Call

AGENTS

Zoe Hall

0468 817 504

zhall.sussexinlet@ljhooker.com.au

AGENCY

LJ Hooker Sussex Inlet

(02) 4441 2135

 **LJ Hooker**

- 4 bedrooms, 2 bathrooms
- Main bedroom with walk-in robe, ensuite and deck access
- Open plan kitchen and living with walk-in pantry and window splashback
- Separate media room
- Ducted air conditioning throughout
- Double garage with internal access
- Large covered entertaining area overlooking the water
- Side access and private slipway

Do not miss your chance to secure a slice of waterfront paradise. Contact us today to arrange your inspection.

MORE DETAILS

Property ID	MJ1S
Property Type	House
Land Area	727.7 m2
Including	Ensuite Ducted Cooling Ducted Heating Dishwasher Outdoor Entertaining Built-in-Robes Remote Garage Slipway

Zoe Hall 0468 817 504

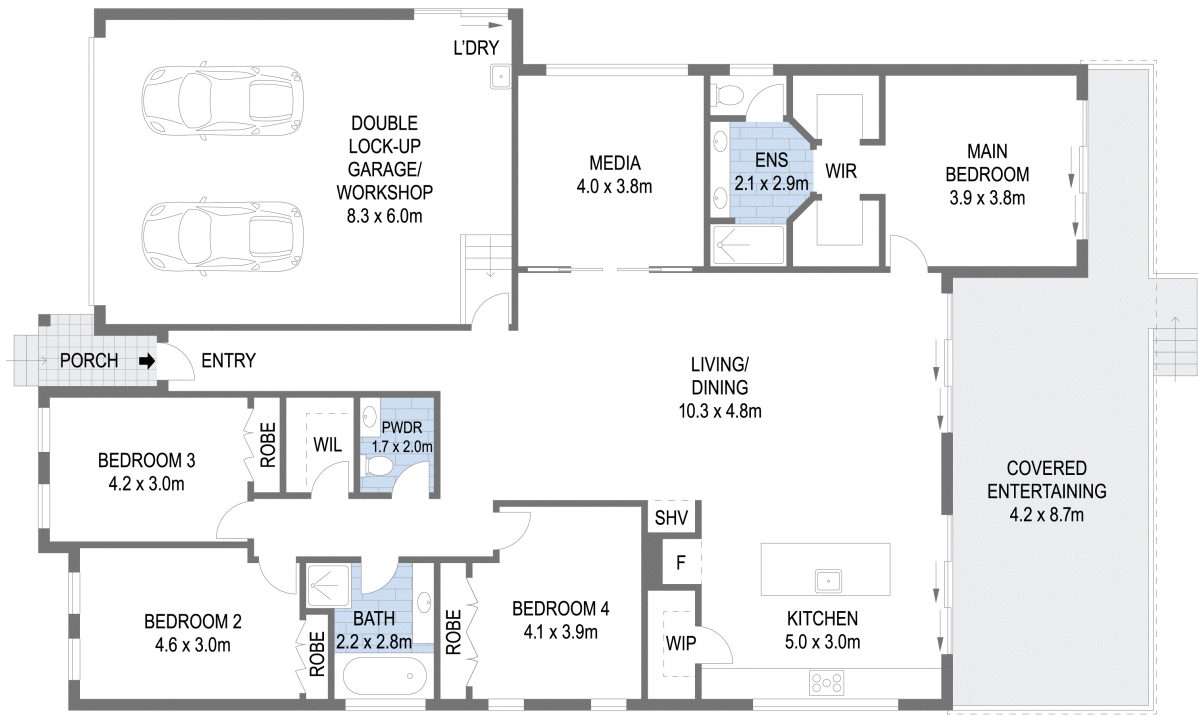
Principal | zhall.sussexinlet@ljhooker.com.au

LJ Hooker Sussex Inlet (02) 4441 2135

1/159 Jacobs Drive, SUSSEX INLET NSW 2540

sussexinlet.ljhooker.com.au | sussexinlet@ljhooker.com.au





Scale in metres. Indicative only. Dimensions are approximate. All information contained herein is gathered from sources we believe to be reliable. However we cannot guarantee its accuracy and interested persons should rely on their own enquiries

3 Plover Close, Sussex Inlet



All information contained therein is gathered from relevant third parties sources.
 We cannot guarantee or give any warranty about the information provided.
 Interested parties must rely solely on their own enquiries.

