



## Sussex Inlet, 23 Dotterel Place

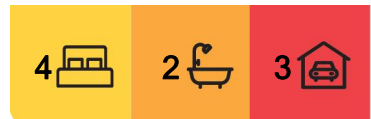
### Waterfront Paradise in Sussex Inlet

Nestled along the shores of Riviera Bay this waterfront paradise awaits. With a northerly facing aspect, the vast water views are undeniably some of the best in the area.

The home has been carefully designed to take advantage of its prestigious location with beautiful views in all the main living spaces while quality finishes such as high ceilings, detailed cornice, ducted air conditioning and ceiling fans all create a luxurious sanctuary. The open-plan living area seamlessly connects to a spacious, gourmet kitchen and dining space, which flows to an inviting outdoor entertaining area complete with powder room. The bedrooms all have built-in-robos and are generously sized meaning there is plenty of space for family and guests. Unveil each new day with tranquil water views from the main bedroom which also has a private ensuite.

Enjoy sun-soaked days fishing from the jetty or exploring the waterways by boat which you can store in the drive through garage and launch using the electric winch from your own slipway.

The three-car garage also has an attic space for extra storage and the home is located in a



**For Sale**  
Please Call

**View**  
[ljhooker.com.au/P4TFAY](http://ljhooker.com.au/P4TFAY)

**Contact**  
**Unity Naismith**  
0421 715 899  
[unaismith.sussexinlet@ljhooker.com.au](mailto:unaismith.sussexinlet@ljhooker.com.au)

**John Naismith**  
0475 362 647  
[jnaismith.sussexinlet@ljhooker.com.au](mailto:jnaismith.sussexinlet@ljhooker.com.au)



**Disclaimer:** All information contained therein is gathered from relevant third parties sources. We cannot guarantee or give any warranty about the information provided. Interested parties must rely solely on their own enquiries.

**LJ Hooker Sussex Inlet**  
**(02) 4441 2135**

quiet cul-de-sac amongst other desirable properties.

Your waterfront paradise in Sussex Inlet is calling you home. Come and experience the magic firsthand by calling Unity or John today.

## More About this Property

<b>Property ID</b>	P4TFAY
<b>Property Type</b>	House
<b>Land Area</b>	692 m <sup>2</sup>
<b>Including</b>	Ensuite Ducted Cooling Ducted Heating Toilets (3) Dishwasher Outdoor Entertaining Built-in-Robes Secure Parking Remote Garage

### Unity Naismith 0421 715 899

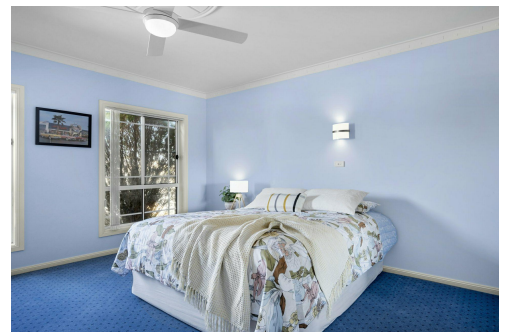
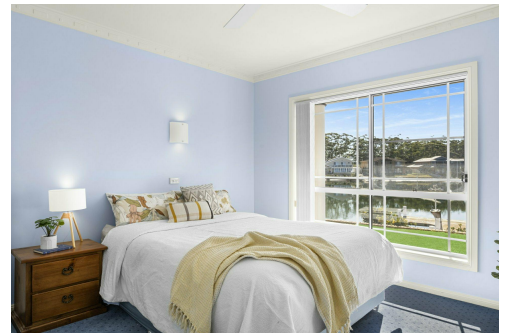
Salesperson | [unaismith.sussexinlet@ljhooker.com.au](mailto:unaismith.sussexinlet@ljhooker.com.au)

### John Naismith 0475 362 647

Salesperson | [jnaismith.sussexinlet@ljhooker.com.au](mailto:jnaismith.sussexinlet@ljhooker.com.au)

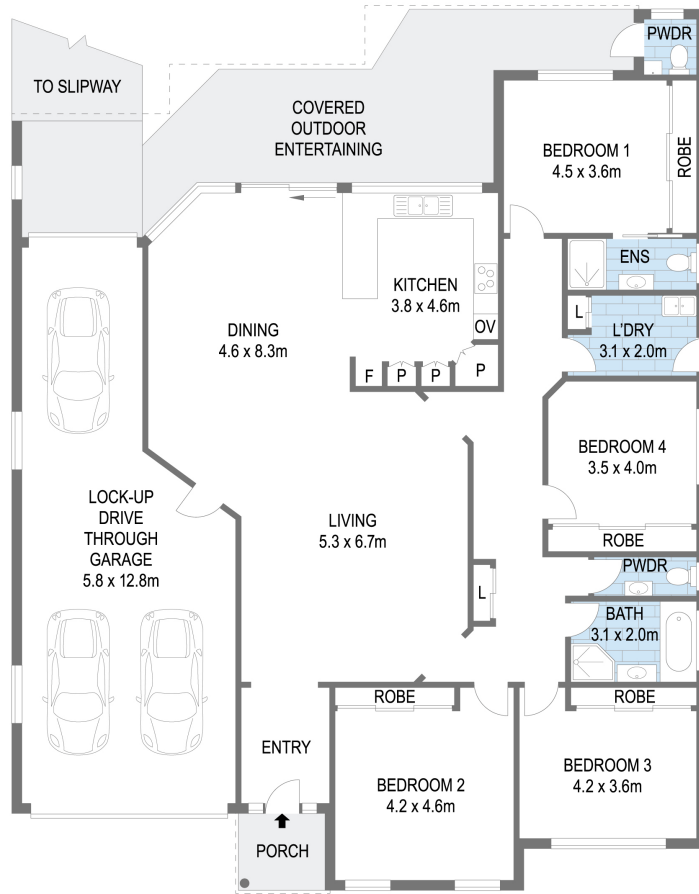
### LJ Hooker Sussex Inlet (02) 4441 2135

1/159 Jacobs Drive, SUSSEX INLET NSW 2540  
[sussexinlet.ljhooker.com.au](http://sussexinlet.ljhooker.com.au) | [sussexinlet@ljhooker.com.au](mailto:sussexinlet@ljhooker.com.au)



**LJ Hooker Sussex Inlet**  
**(02) 4441 2135**

**Disclaimer:** All information contained therein is gathered from relevant third parties sources. We cannot guarantee or give any warranty about the information provided. Interested parties must rely solely on their own enquiries.



Scale in metres. Indicative only. Dimensions are approximate. All information contained herein is gathered from sources we believe to be reliable. However we cannot guarantee its accuracy and interested persons should rely on their own enquiries

23 Dotterel Place, Sussex Inlet



**LJ Hooker Sussex Inlet**  
**(02) 4441 2135**

**Disclaimer:** All information contained therein is gathered from relevant third parties sources. We cannot guarantee or give any warranty about the information provided. Interested parties must rely solely on their own enquiries.