



## Sussex Inlet, 18 Pacificana Drive

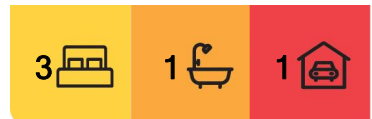
Get a Start in South Sussex!

Located on the beach hill as you drive up to Cudmirrah Beach this home boasts a freshly painted interior, new carpet, and updated lighting, meaning you can move straight in and begin enjoying the coastal lifestyle.

Features:

- Freshly painted throughout
- New carpet and modern lighting
- Tidy kitchen
- Second toilet
- Large main bedroom with built-in-robos
- Sunny rear deck
- Ideally located just less than 2km to Cudmirrah Beach
- Ready to move in with room to add your touch

While the exterior is ready for TLC, the potential for adding your personal touch makes this a fantastic opportunity for first home buyers or holiday homeowners.



**For Sale**  
\$610,000

**View**  
Sat 16th Nov @ 2:00PM - 2:30PM

**Contact**  
**Unity Naismith**  
0421 715 899  
unaismith.sussexinlet@ljhooker.com.au  
**John Naismith**  
0475 362 647  
jnaismith.sussexinlet@ljhooker.com.au



**LJ Hooker Sussex Inlet**  
**(02) 4441 2135**

**Disclaimer:** All information contained therein is gathered from relevant third parties sources. We cannot guarantee or give any warranty about the information provided. Interested parties must rely solely on their own enquiries.

With the beach and inlet just moments away, this is your chance to secure a slice of the relaxed, beachside living on offer in South Sussex.

Don't miss out on this fantastic opportunity. Contact us Jon or Unity today to arrange a viewing!

## More About this Property

<b>Property ID</b>	PJTFAY
<b>Property Type</b>	House
<b>Land Area</b>	689 m <sup>2</sup>
<b>Including</b>	Toilets (2) Deck Built-in-Robes Secure Parking

### Unity Naismith 0421 715 899

Salesperson | [unaismith.sussexinlet@ljhooker.com.au](mailto:unaismith.sussexinlet@ljhooker.com.au)

### John Naismith 0475 362 647

Salesperson | [jnaismith.sussexinlet@ljhooker.com.au](mailto:jnaismith.sussexinlet@ljhooker.com.au)

### LJ Hooker Sussex Inlet (02) 4441 2135

1/159 Jacobs Drive, SUSSEX INLET NSW 2540

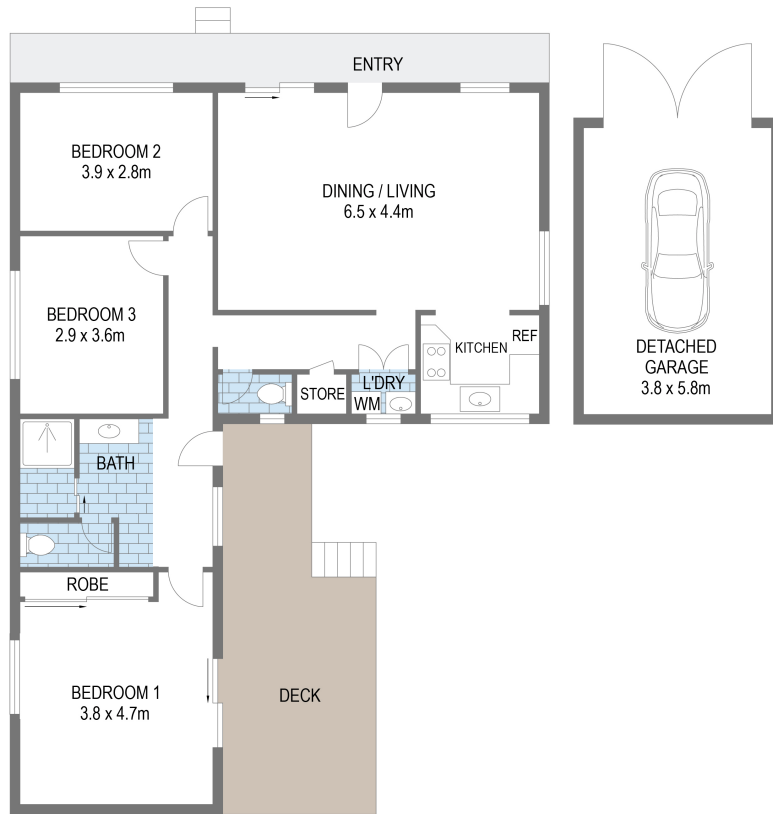
[sussexinlet.ljhooker.com.au](http://sussexinlet.ljhooker.com.au) | [sussexinlet@ljhooker.com.au](mailto:sussexinlet@ljhooker.com.au)



**Disclaimer:** All information contained therein is gathered from relevant third parties sources.

We cannot guarantee or give any warranty about the information provided. Interested parties must rely solely on their own enquiries.

**LJ Hooker Sussex Inlet**  
**(02) 4441 2135**



Scale in meters. Indicative only. Dimensions are approximate. All information contained herein is gathered from sources we believe to be reliable. However we cannot guarantee its accuracy and interested persons should rely on their own enquiries.

## 18 Pacificana Drive, Sussex Inlet



**LJ Hooker Sussex Inlet**  
**(02) 4441 2135**

**Disclaimer:** All information contained therein is gathered from relevant third parties sources. We cannot guarantee or give any warranty about the information provided. Interested parties must rely solely on their own enquiries.