

17 Ray Street, Sussex Inlet




Low-Maintenance Coastal Escape

Located in South Sussex, this brick and tile home offers comfort, convenience and just the right amount of space, perfect for downsizers, holidaymakers or anyone seeking an easy-care coastal base.

Featuring:

- Three bedrooms, main with built-in robe
- Bathroom with separate shower and bathtub
- Practical L-shaped kitchen, dining & living layout
- Huge undercover entertaining area
- External laundry with handy second toilet
- Double-length carport plus storage shed
- 556m²; block with a retained yard offering two usable levels
- Only 400m to Cater Crescent Island for swimming, fishing & BBQs with stunning views

The owner is willing to include furniture if it helps the buyer! This one is neat as a pin and won't last long. Call Unity or John today to arrange your inspection.

3  1  2 

FOR SALE

Please Call

AGENTS

Unity Naismith

0421 715 899

unaismith.sussexinlet@ljhooker.com.au

John Naismith

0475 362 647

jnaismith.sussexinlet@ljhooker.com.au

AGENCY

LJ Hooker Sussex Inlet

(02) 4441 2135

All information contained therein is gathered from relevant third parties sources. We cannot guarantee or give any warranty about the information provided. Interested parties must rely solely on their own enquiries.

 **LJ Hooker**

MORE DETAILS

Property ID 9WJ1S
Property Type House
Land Area 556 m2
Including Toilets (2)
Dishwasher
Outdoor Entertaining
Built-in-Robes

Unity Naismith 0421 715 899

Salesperson | unaismith.sussexinlet@ljhooker.com.au

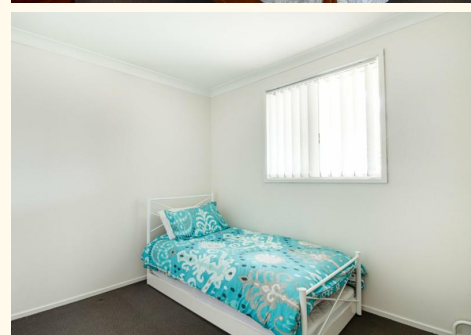
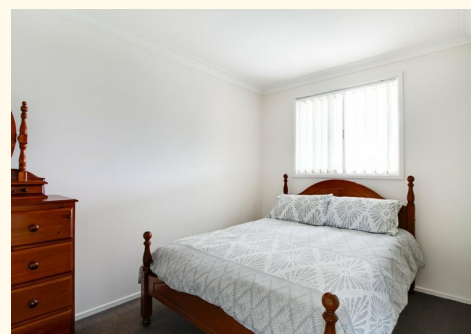
John Naismith 0475 362 647

Salesperson | jnaismith.sussexinlet@ljhooker.com.au

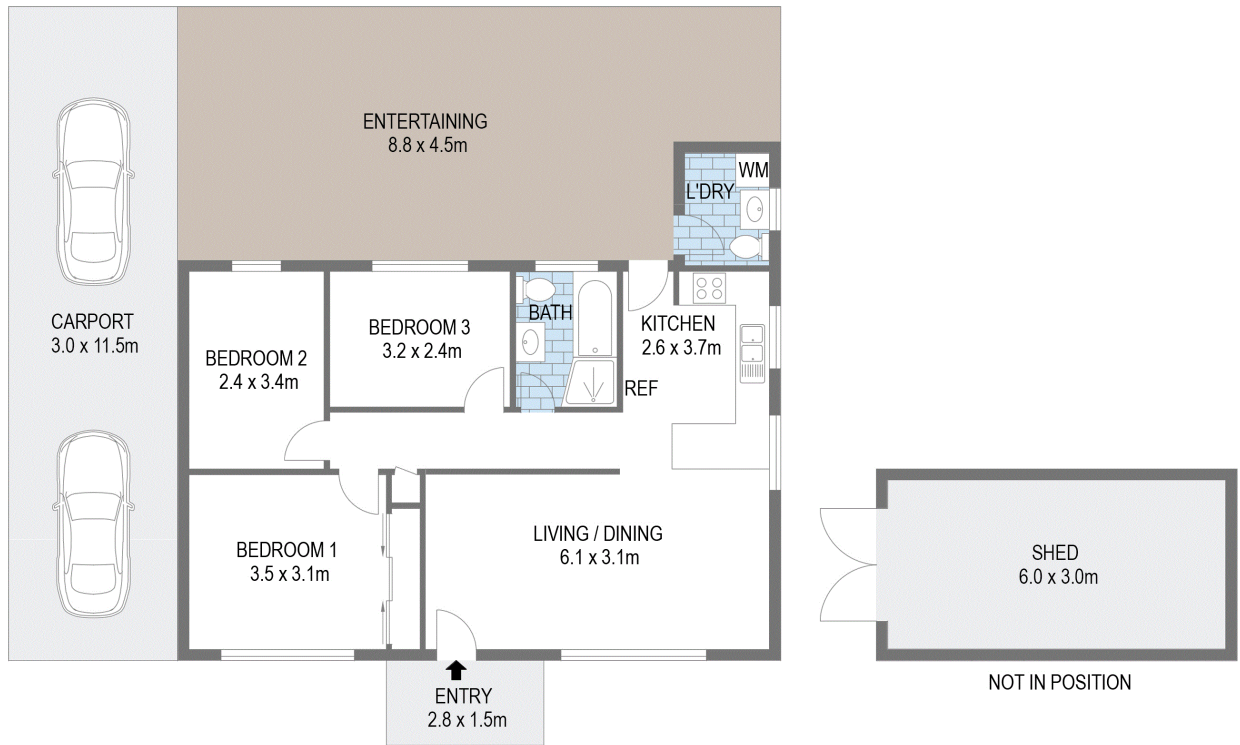
LJ Hooker Sussex Inlet (02) 4441 2135

1/159 Jacobs Drive, SUSSEX INLET NSW 2540

sussexinlet.ljhooker.com.au | sussexinlet@ljhooker.com.au



All information contained therein is gathered from relevant third parties sources.
We cannot guarantee or give any warranty about the information provided.
Interested parties must rely solely on their own enquiries.



Scale in metres. Indicative only. Dimensions are approximate. All information contained herein is gathered from sources we believe to be reliable. However we cannot guarantee its accuracy and interested persons should rely on their own enquiries



17 Ray Street, Sussex Inlet



All information contained therein is gathered from relevant third parties sources.
 We cannot guarantee or give any warranty about the information provided.
 Interested parties must rely solely on their own enquiries.

