



14 Dotterel Place, Sussex Inlet

Grand Waterfront Living in Prestigious Dotterel Place


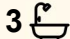
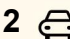
Positioned in one of Sussex Inlet's most prestigious waterfront pockets, 14 Dotterel Place presents an extraordinary opportunity to secure a grand residence with exceptional scale, flexibility and an enviable waterfront lifestyle.

From the moment you arrive, the home makes a striking first impression, with its commanding facade, expansive proportions and impressive entrance foyer featuring a sweeping staircase and soaring void.

Designed for large families and effortless entertaining, the home offers four generous bedrooms, with the substantial media room providing the flexibility to serve as a fifth bedroom, guest suite or additional living space if required.

Multiple living zones are thoughtfully spread across two spacious levels, including formal and informal living areas, a dedicated family room upstairs and expansive open plan living and dining spaces that seamlessly connect to the waterfront entertaining zones.

At the heart of the lower level, the kitchen is perfectly positioned to

4  3  2 

FOR SALE
\$3,290,000

VIEW
By Appointment

AGENTS
Zoe Hall
0468 817 504
zhall.sussexinlet@ljhooker.com.au

AGENCY
LJ Hooker Sussex Inlet
(02) 4441 2135

All information contained therein is gathered from relevant third parties sources.
We cannot guarantee or give any warranty about the information provided.
Interested parties must rely solely on their own enquiries.

 **LJ Hooker**

overlook the water and flows seamlessly through to the adjoining dining and living spaces.

The main bedroom is a true retreat, complete with a walk-in robe and generous ensuite, where a stunning water outlook creates a resort-style feel from the large corner bath.

Outside, the lifestyle on offer is simply exceptional. Boasting beautiful wide waterfrontage, this impressive home features a private jetty and slipway, making it ideal for boating, fishing and waterfront living at its finest.

The expansive covered entertaining area and deck are designed to embrace the stunning setting, complete with spa, lounging zones and uninterrupted views across the water, the perfect place to entertain, or simply sit back, relax and unwind at the end of the day.

Further enhancing the home's comfort and functionality are premium inclusions such as ducted air conditioning throughout and a fireplace for cosy winter evenings.

A home of this scale, calibre and waterfront setting is a rare opportunity in one of Sussex Inlet's most tightly held locations.

MORE DETAILS

Property ID	DSJ1S
Property Type	House
Land Area	707 m2
Including	Ensuite
	Ducted Cooling
	Ducted Heating
	Alarm
	Intercom
	Spa
	Deck
	Dishwasher
	Outdoor Entertaining
	Built-in-Robes
	Secure Parking
	Slipway
	jetty

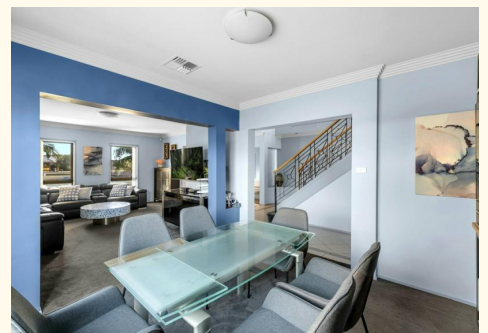
Zoe Hall 0468 817 504

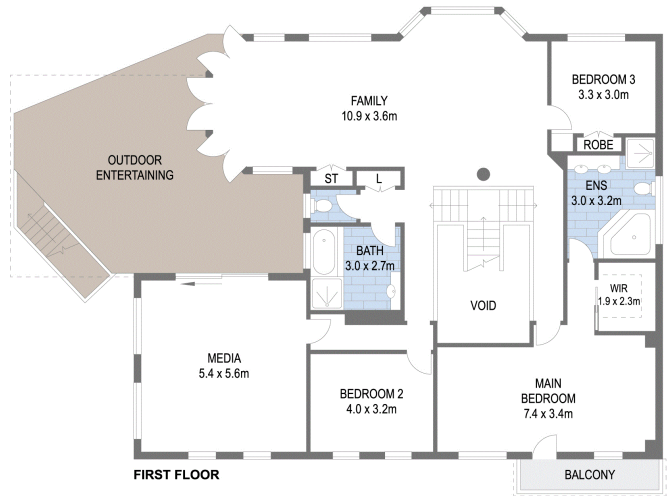
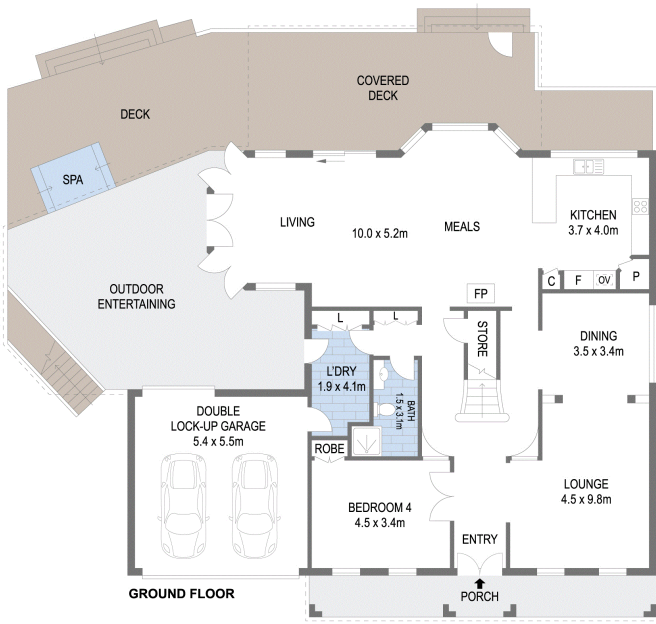
Principal | zhall.sussexinlet@ljhooker.com.au

LJ Hooker Sussex Inlet (02) 4441 2135

1/159 Jacobs Drive, SUSSEX INLET NSW 2540

sussexinlet.ljhooker.com.au | sussexinlet@ljhooker.com.au





Scale in metres. Indicative only. Dimensions are approximate. All information contained herein is gathered from sources we believe to be reliable. However we cannot guarantee its accuracy and interested persons should rely on their own enquiries



14 Dotterel Place, Sussex Inlet



All information contained therein is gathered from relevant third parties sources. We cannot guarantee or give any warranty about the information provided. Interested parties must rely solely on their own enquiries.

