



## Surry Hills, 15 Brumby Street

City-Fringe Living with a Private Retreat Feel



Nestled in a peaceful enclave on the edge of the city, this beautifully appointed terrace blends contemporary updates with timeless charm. Bathed in natural light, the home boasts airy interiors, stylish finishes, and an inviting sunlit courtyard perfect for entertaining. The open-plan living and dining areas are enhanced by polished timber floors and soaring ceilings, while the sleek Caesarstone kitchen is fitted with premium Bosch gas appliances. Upstairs, two generously sized bedrooms feature built-in robes, with the main opening to a private sun-drenched balcony. A pull-down attic offers additional skylit storage, and an external laundry with a second W/C adds convenience. Positioned just a short stroll from Crown Street's vibrant dining scene, boutique shops, Central Station, and the greenery of Prince Alfred Park, this home delivers the ultimate inner-city lifestyle.

- Light-filled open-plan living/dining
- Modern kitchen with breakfast bar & Bosch gas fittings
- Sun-soaked courtyard ideal for entertaining

# LJ Hooker

**Disclaimer:** All information contained therein is gathered from relevant third parties sources. We cannot guarantee or give any warranty about the information provided. Interested parties must rely solely on their own enquiries.

**For Sale**  
SOLD | Contact Agent

**View**  
[ljhooker.com.au/28CHYY](http://ljhooker.com.au/28CHYY)

**Contact**  
**Aaron Del Monte**  
0447 144 434  
[aaron.delmonte@ljhdoublebay.com](mailto:aaron.delmonte@ljhdoublebay.com)

**Kevin O'Kane**  
0449 960 940  
[kevin@ljhdoublebay.com](mailto:kevin@ljhdoublebay.com)

**LJ Hooker Double Bay**  
**(02) 9185 2816**

- Two spacious bedrooms with built-in robes
- Main bedroom opens to a sunny private balcony
- Attic with skylit storage, bright central bathroom
- External laundry with additional w/c
- Walk to cafes, bars, transport & parklands

## More About this Property

<b>Property ID</b>	28CHYY
<b>Property Type</b>	House
<b>House Size</b>	63 m2
<b>Land Area</b>	63 m2

**Aaron Del Monte 0447 144 434**

Managing Director | aaron.delmonte@ljhdoublebay.com

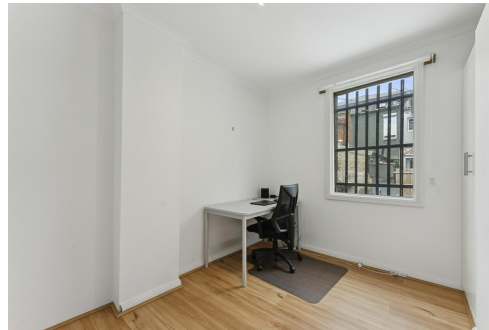
**Kevin O'Kane 0449 960 940**

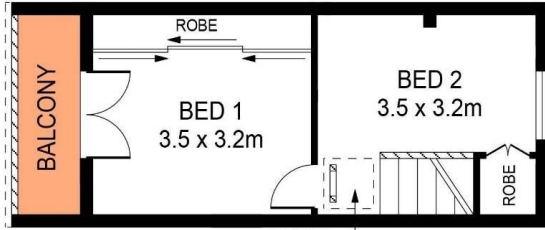
Property Partner | kevin@ljhdoublebay.com

**LJ Hooker Double Bay (02) 9185 2816**

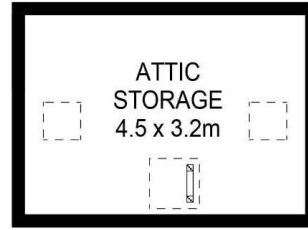
38 Ocean Street, WOOLLAHRA NSW 2025

doublebay.ljhooker.com.au | admin@ljhdoublebay.com

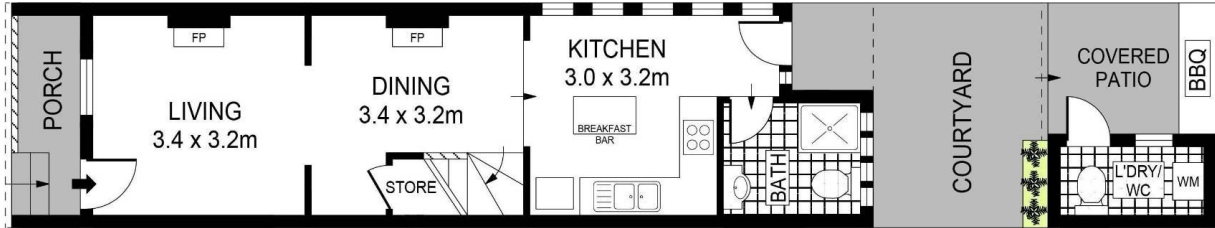




FIRST FLOOR



ATTIC



GROUND FLOOR



0 1 2 3 4 5 SCALE (METRES)

PLANS SHOWN ONLY INDICATIVE OF LAYOUT. DIMENSIONS ARE APPROXIMATE.  
Ref. No: 89533

15 BRUMBY STREET

SURRY HILLS