

Surry Hills, 11/2-4 Bellevue Street

Bright & Modern with City Views

This stylish 1 bedroom apartment, located on Level 3 of an upscale, contemporary building, offers the perfect blend of comfort and convenience.

The modern kitchen is equipped with stone benches, stainless steel appliances, gas cooking, and a dishwasher. The open-plan living and dining area features polished timber floorboards throughout, flowing onto a sun-drenched balcony. The generous bedroom includes a mirrored built-in wardrobe and plush carpet. The sizeable main bathroom comes with a shower, and there is an internal laundry with a dryer.

Reverse cycle split system air conditioning ensures year-round comfort in the living room, while the bright and sunny balcony offers stunning city views. The apartment is situated on Level 3 of a secure building with restricted level access, and street parking is available.

Located in a small block of apartments, this property is just moments from local transport,

LJ Hooker

Disclaimer: All information contained therein is gathered from relevant third parties sources. We cannot guarantee or give any warranty about the information provided. Interested parties must rely solely on their own enquiries.



For Sale

Auction | Contact Agent

View

Sat 22nd Mar @ 9:00AM - 9:30AM

Contact

Aaron Del Monte

0447 144 434

aaron.delmonte@ljhdoublebay.com

Kevin O'Kane

0449 960 940

kevin@ljhdoublebay.com

LJ Hooker Double Bay
(02) 9185 2816

Central Station, and the CBD. Enjoy the vibrant atmosphere of Surry Hills, with its renowned cafes and restaurants just steps away.

More About this Property

Property ID	259HYY
Property Type	Apartment
House Size	45 m ²
Land Area	45 m ²

Aaron Del Monte 0447 144 434

Managing Director | aaron.delmonte@ljhdoublebay.com

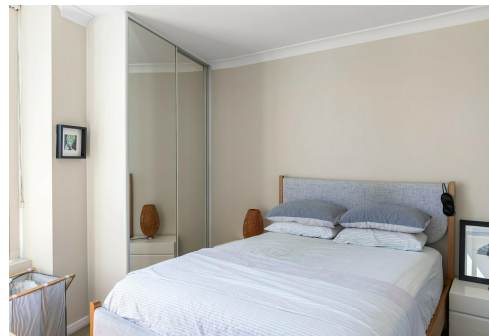
Kevin O'Kane 0449 960 940

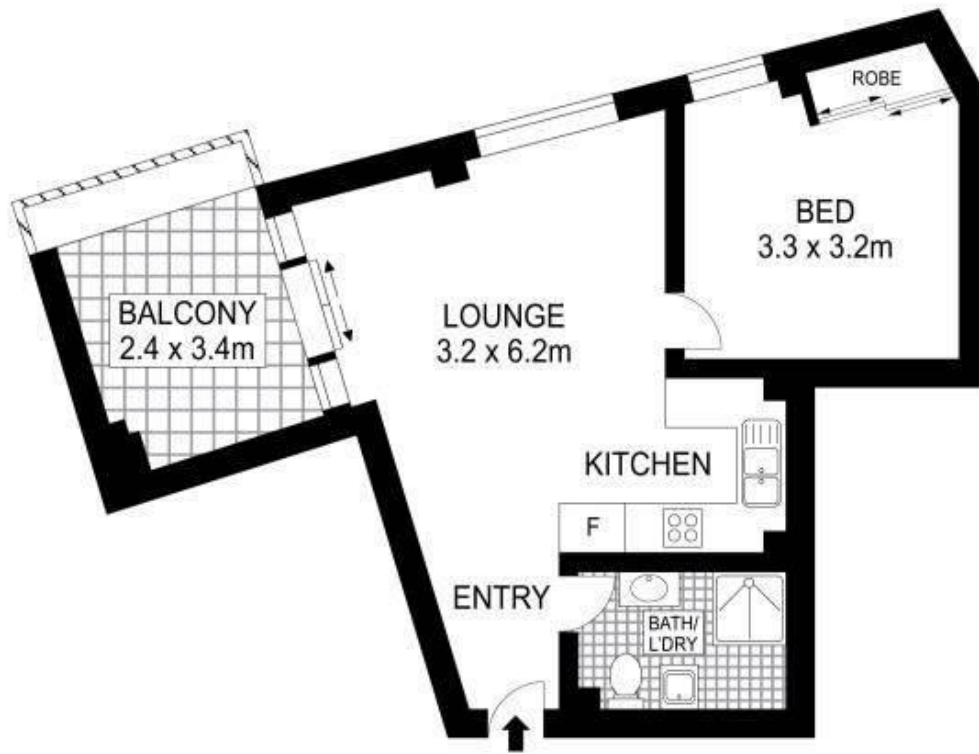
Property Partner | kevin@ljhdoublebay.com

LJ Hooker Double Bay (02) 9185 2816

38 Ocean Street, WOOLLAHRA NSW 2025

doublebay.ljhooker.com.au | admin@ljhdoublebay.com





0 1 2 3 4 5
Scale in metres. Indicative only. Dimensions are approximate.

