

Surrey Downs, 8 Wyndham Crescent

"Under Instructions from The Public Trustee"

3 1 1

"Under Instructions from The Public Trustee"

Situated in a quiet Cul-de-sac, 8 Wyndham Crescent presents as the ideal family home that was extended and updated in circa 2000's. Wyndham Crescent is a quite tree lined street lined with family homes of similar age and style.

Zoned General Neighbourhood with a 15.3m (approx) frontage, explore the opportunity to develop a battle axe configuration (STCC).

Featuring an updated kitchen and bathroom, walk in robes to all 3 bedrooms and ceramic tiling to the main living zones. New carpet to the bedrooms and freshly painted throughout, this home is ready to enjoy just as it currently stands. Further amenities include ducted evaporative air-conditioning, paved rear pergola, RWT and attached single lock up carport that has potential to be utilised as a tandem lock up carport.

For Sale
\$700,000

View
ljhooker.com.au/60R8FDJ

Contact
Nick Ploubidis
0423 840 514
nploubidis@ljhkensingtonunley.com.au



LJ Hooker Kensington | Unley
(08) 8431 6088

Disclaimer: All information contained therein is gathered from relevant third parties sources. We cannot guarantee or give any warranty about the information provided. Interested parties must rely solely on their own enquiries.

The low maintenance large front and rear yards can be kept as is or transformed into ideal play spaces. With large open areas, two garden sheds, veggie planter boxes, fire pit and ample sunshine, the opportunities are endless for family fun and entertaining.

Direct access to Hancock Road via a pedestrian pathway from Wyndham Crescent with Fairview Shopping Center across to road. Close proximity to Surrey Downs Primary School and Tea Tree Gully Golf Club.

(\$700,000)

CT: Volume 5490 Folio 892

Council: City of Tea Tree Gully

Council Rates: \$1,581.45 per annum (approx)

Water Rates: \$153.70 per quarter (approx)

Land Size: 720 square metres (approx)

Year Built: 1971 (approx)

To make an offer, scan the code below:

<https://prop.ps//nv/kmpsEJSHt>

(Please copy and paste the link into your browser)

More About this Property

Property ID	60R8FDJ
Property Type	House
House Size	198 m ²
Land Area	720 m ²

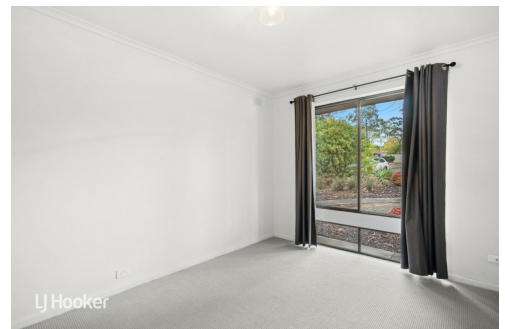
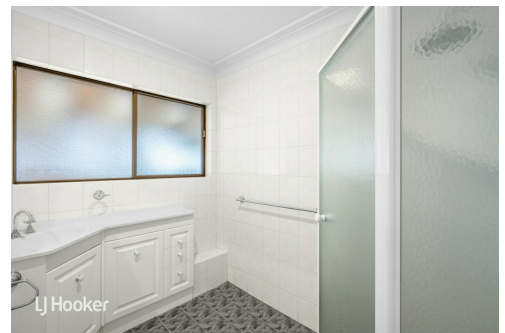
Nick Ploubidis 0423 840 514

Principal | Auctioneer | nploubidis@ljhkensingtonunley.com.au

LJ Hooker Kensington | Unley (08) 8431 6088

295 Kensington Road, KENSINGTON PARK SA 5068

kensingtonunley.ljhooker.com.au | reception@ljhkensingtonunley.com.au



Disclaimer: All information contained therein is gathered from relevant third parties sources. We cannot guarantee or give any warranty about the information provided. Interested parties must rely solely on their own enquiries.

LJ Hooker Kensington | Unley
(08) 8431 6088



Scale in metres. This drawing is for illustration purposes only. All measurements are approximate and details intended to be relied upon should be independently verified.

Produced by The Fotobase Group