

Surrey Downs, 7 Zenith Close

A Rare Opportunity!

It is a pleasure to offer this quality two storey family home in the popular area of Surrey Downs!

The fortunate new owner will appreciate the peaceful location on a quiet court, surrounded by other high-quality homes, and set on a spacious block of around 824sqm with scenic views of the hills.

Downstairs, you'll find multiple living areas, a study/4th bedroom, a washroom, and a kitchen with a casual dining space that leads to an expansive outdoor entertaining area. This features a built-in BBQ, overlooking a large garden with plenty of room for the family, complete with fruit trees, a chicken run, and a vegetable garden to enrich your lifestyle.

Upstairs, you'll find a study nook, two bathrooms, and three additional bedrooms, including the master suite with a retreat, ensuite, and a balcony that offers beautiful views.



For Sale
\$895,000 - \$975,000

View
ljhooker.com.au/2BJ9GJU

Contact
Steve Lund
0474 991 234
stevel@ljhsales.com.au



Disclaimer: All information contained therein is gathered from relevant third parties sources. We cannot guarantee or give any warranty about the information provided. Interested parties must rely solely on their own enquiries.

**LJ Hooker Greenwith | Golden Grove
| Mawson Lakes | Modbury
(08) 8289 6660**

Offering secure parking and ample space for cars and outdoor equipment, along with a large shed/workshop, water tanks, and solar energy, this property is sure to meet the needs of every family member.

You will love:

- *Quality well-appointed solid timber kitchen with gas cooking and lots of storage
- * Open plan kitchen/casual dining overlooking and opening onto outside entertaining area
- *Large airconditioned family room that also opens on to outside entertainment area
- * Formal lounge with slow combustion wood fire
- * Separate Formal dining
- * 3 bedrooms, 2 with built in robes, plus 4th bedroom/study
- * Master bedroom with large built-in-robe, retreat and balcony
- * A covered outdoor entertaining space with a gabled roof for year-round enjoyment.
- * Built in BBQ adjacent to garden and entertaining area
- * Gas heater and Ducted cooling
- * Secure parking with triple length carport and auto roller door
- * Large, powered workshop/shed
- * Solar panels with generous feed-in tariff

A visit to this property is a must to truly appreciate all it has to offer!

All information provided has been obtained from sources we believe to be accurate, however, we cannot guarantee the information is accurate and we accept no liability for any errors or omissions (including but not limited to a property's land size, floor plans and size, building age and condition). Interested parties should make their own enquiries and obtain their own legal and financial advice. Should this property be scheduled for auction, the Vendor's Statement may be inspected at either of our two LJ Hooker Property Specialists Real Estate offices for 3 consecutive business days immediately preceding the auction and at the auction for 30 minutes before it starts.

RLA 208516



Disclaimer: All information contained therein is gathered from relevant third parties sources. We cannot guarantee or give any warranty about the information provided. Interested parties must rely solely on their own enquiries.

**LJ Hooker Greenwith | Golden Grove
| Mawson Lakes | Modbury
(08) 8289 6660**

More About this Property

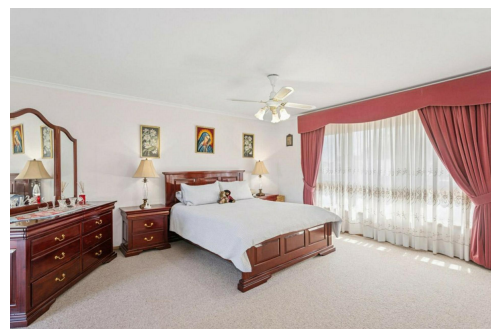
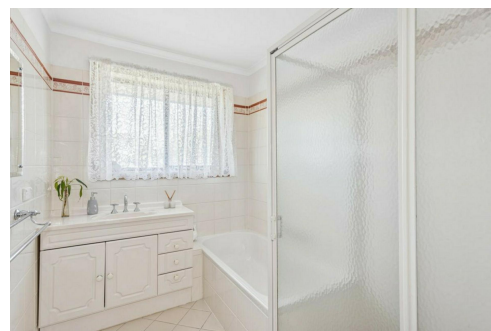
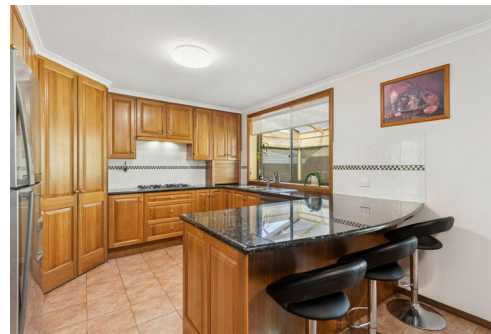
Property ID	2BJ9GJU
Property Type	House
House Size	225 m2
Land Area	824 m2
Including	Air Conditioning Ducted Cooling Evaporative Cooling Toilets (3) Balcony Deck Dishwasher Outdoor Entertaining Workshop Built-in-Robes Secure Parking Fully Fenced Remote Garage Solar Panels Water Tank

Steve Lund 0474 991 234

Sales Specialist | stevel@ljhsales.com.au

LJ Hooker Greenwith | Golden Grove | Mawson Lakes | Modbury (08) 8289 6660

North East, Shop 2, 1007 North East Road, RIDGEHAVEN SA 5097
greenwithgoldengrove.ljhooker.com.au | info@ljhsupport.com.au



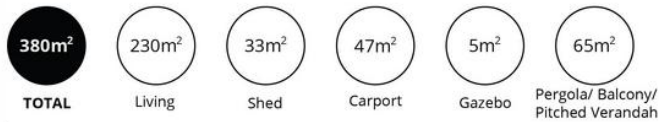
Disclaimer: All information contained therein is gathered from relevant third parties sources.

We cannot guarantee or give any warranty about the information provided. Interested parties must rely solely on their own enquiries.

**LJ Hooker Greenwith | Golden Grove
| Mawson Lakes | Modbury
(08) 8289 6660**



UPPER LEVEL



Scale in metres. This drawing is for illustration purposes only. All measurements are approximate and details intended to be relied upon should be independently verified.

Produced by The Fotobase Group