



5 Zephyr Court, Surrey Downs

## Large Family Home!


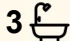
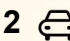
It is a pleasure to offer this quality two storey family home in the popular area of Surrey Downs that's ideally located with easy access to parks, schools, shopping and public transport.

The fortunate new owner will appreciate the peaceful location on a quiet court, surrounded by other high-quality homes, and set on a spacious block of approximately 705qm that backs onto a lovely reserve.

Downstairs, you'll find the formal living areas, a study/4th bedroom and bathroom, plus a kitchen with casual dining and family area that opens onto the covered outdoor entertaining area and fully established gardens with space for the children and pets to play.

Upstairs, you'll find, 3 more bedrooms and 2 more bathrooms, plus living spaces that includes a second living and huge games/family room with a built-in bar and balcony to relax on, that overlooks the park and provides views of the Adelaide Hills.

With lots of off-street parking, including the large double garage and a second driveway that's perfect for a caravan or boat, it's sure to meet the needs of the whole family.

4  3  2 

**FOR SALE**

Please Call

**AGENCY**

LJ Hooker Property Specialists Gawler |  
Barossa  
(08) 8522 3311

All information contained therein is gathered from relevant third parties sources.  
We cannot guarantee or give any warranty about the information provided.  
Interested parties must rely solely on their own enquiries.

 **LJ Hooker**

You will love:

- Flexible floor plan with multiple living areas.
- 4 Bedrooms, 2 with built-in-robies and master with walk-in-robe, plus ensuite.
- Quality well-appointed solid timber kitchen with lots of storage.
- Open plan kitchen with casual dining and family room that opens onto the outside entertaining.
- Large covered outside entertaining area with fully established gardens.
- Ducted evaporative cooling, plus gas log heater and air-conditioning units.
- Utility shed/room with power.
- Secure parking with internal access from the double garage and auto roller doors.

You must visit this property to fully appreciate it!

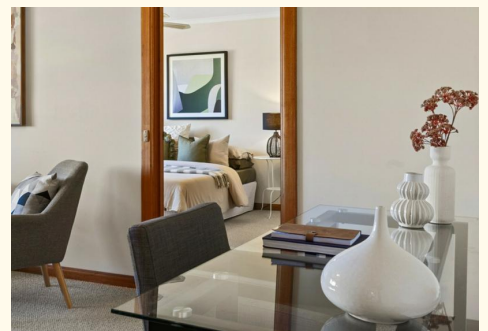
For any further information, or to make a time to inspect, please contact Steve Lund on 0474 991 234.

All information provided has been obtained from sources we believe to be accurate, however, we cannot guarantee the information is accurate and we accept no liability for any errors or omissions (including but not limited to a property's land size, floor plans and size, building age and condition). Interested parties should make their own enquiries and obtain their own legal and financial advice. Should this property be scheduled for auction, the Vendor's Statement may be inspected at our LJ Hooker Property Specialists Real Estate office for 3 consecutive business days immediately preceding the auction and at the auction for 30 minutes before it starts. RLA 343733

## MORE DETAILS

Property ID	1VZYG54
Property Type	House
House Size	316 m2
Land Area	705 m2
Including	Ensuite Air Conditioning Ducted Cooling Evaporative Cooling Alarm Balcony Dishwasher Outdoor Entertaining Built-in-Robes Secure Parking Fully Fenced Remote Garage Water Tank

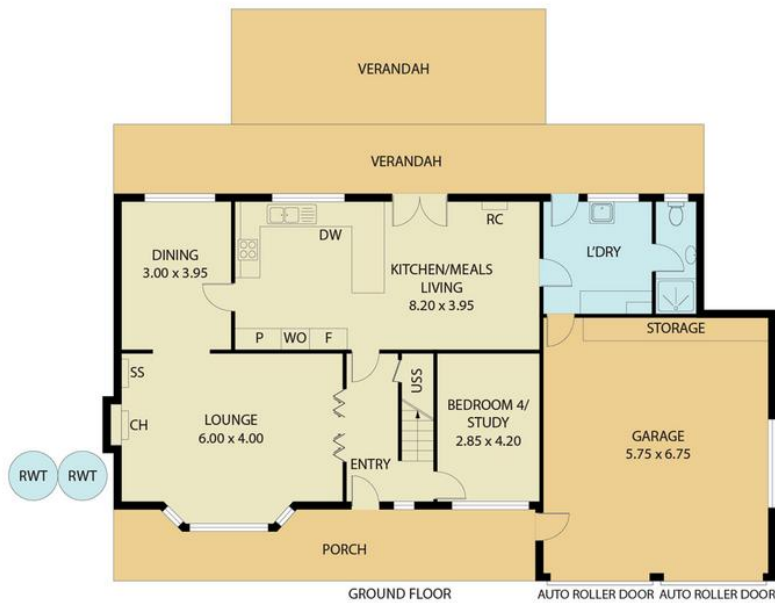
**LJ Hooker Property Specialists Gawler | Barossa (08) 8522 3311**  
26 Adelaide Road, GAWLER SA 5118  
[gawlerbarossa.ljhooker.com.au](http://gawlerbarossa.ljhooker.com.au) | [gawler@ljhsupport.com.au](mailto:gawler@ljhsupport.com.au)



5 Zephyr Court,  
**SURREY DOWNS**



FIRST FLOOR



GROUND FLOOR

AUTO ROLLER DOOR AUTO ROLLER DOOR

Living:	232.20SQ.M
Garage:	38.10SQ.M
Porch:	18.70SQ.M
Verandah/Balcony:	61.10SQ.M
<b>TOTAL:</b>	<b>350.10SQ.M</b>

This Drawing is for illustration purposes only. All measurements are internal and approximate. Details intended to be relied upon should be independently verified.