

Surrey Downs, 24 Lydia Avenue

Charming Family Home with Stunning Views of the Foothills

With all the hard work done, welcome to a home that you just need to move into and start enjoying from the very first moment. With immaculate gardens the green finger will just love, enjoy both front and rear aspects overlooking the spacious feeling views right out to the base of the Adelaide foothills.

Features include:

- * Land size: 722m2 (approx.)
- * 3 generous bedrooms, all with built-in robes and easy access to the stunning updated bathroom
- * Centrally located brand new kitchen with dishwasher and ample cupboard space
- * Sunken formal lounge and dining offering versatility for a home office/study
- * Additional meals and family area off the kitchen offering easy entry to the outside space
- * Peaceful undercover outside entertaining area overlooking the grass, stunning gardens



Disclaimer: All information contained therein is gathered from relevant third parties sources. We cannot guarantee or give any warranty about the information provided. Interested parties must rely solely on their own enquiries.



For Sale
\$780,000 - \$850,000

View
ljhooker.com.au/2AXMGJU

Contact
Michael Fenn
0405 157 840
michaelf@ljhsales.com.au

Steve Lund
0474 991 234
stevel@ljhsales.com.au

**LJ Hooker Greenwith | Golden Grove
| Mawson Lakes | Modbury
(08) 8289 6660**

and view

* Lock up carport with drive through access to garage/workshop

* Ducted evaporative cooling, gas heating and much more

Experience the perfect blend of comfort and convenience in a community that truly feels like home. The property is ideally located close to shops, cafes, and public transport, as well as a range of private and public school options, making it perfect for families. Don't miss the opportunity to make this delightful property your own!

All information provided has been obtained from sources we believe to be accurate, however, we cannot guarantee the information is accurate and we accept no liability for any errors or omissions (including but not limited to a property's land size, floor plans and size, building age and condition). Interested parties should make their own enquiries and obtain their own legal and financial advice. Should this property be scheduled for auction, the Vendor's Statement may be inspected at either of our two LJ Hooker Property Specialists Real Estate offices for 3 consecutive business days immediately preceding the auction and at the auction for 30 minutes before it starts.

RLA 208516

More About this Property

Property ID	2AXMGJU
Property Type	House
House Size	140 m ²
Land Area	722 m ²
Including	Outdoor Entertaining Built-in-Robes Fully Fenced

Michael Fenn 0405 157 840

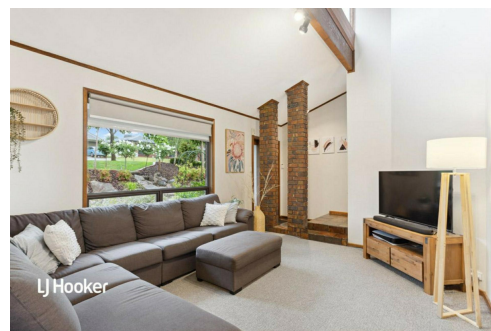
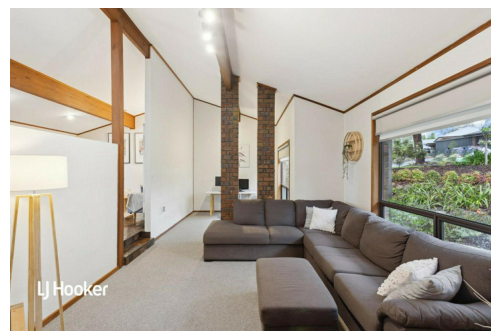
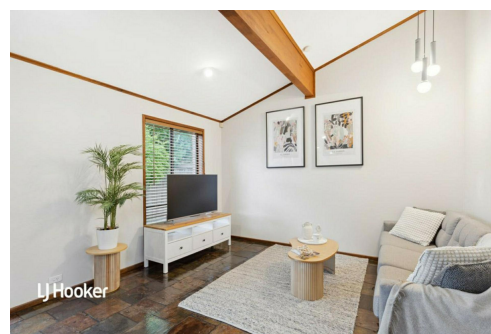
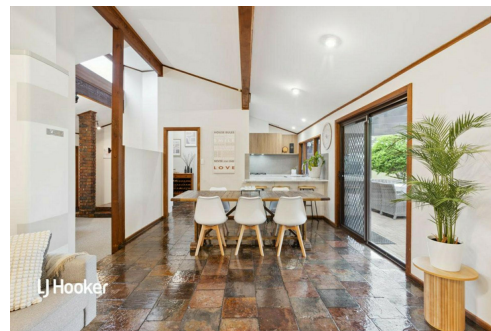
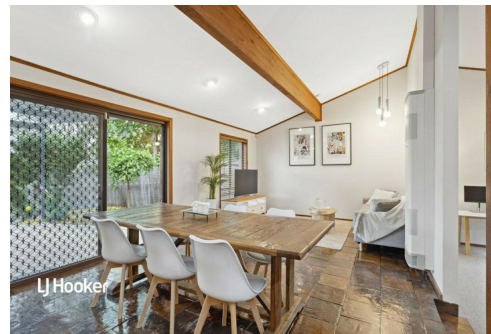
Managing Director | Auctioneer | michaelf@ljhsales.com.au

Steve Lund 0474 991 234

Sales Specialist | stevel@ljhsales.com.au

LJ Hooker Greenwith | Golden Grove | Mawson Lakes | Modbury (08) 8289 6660

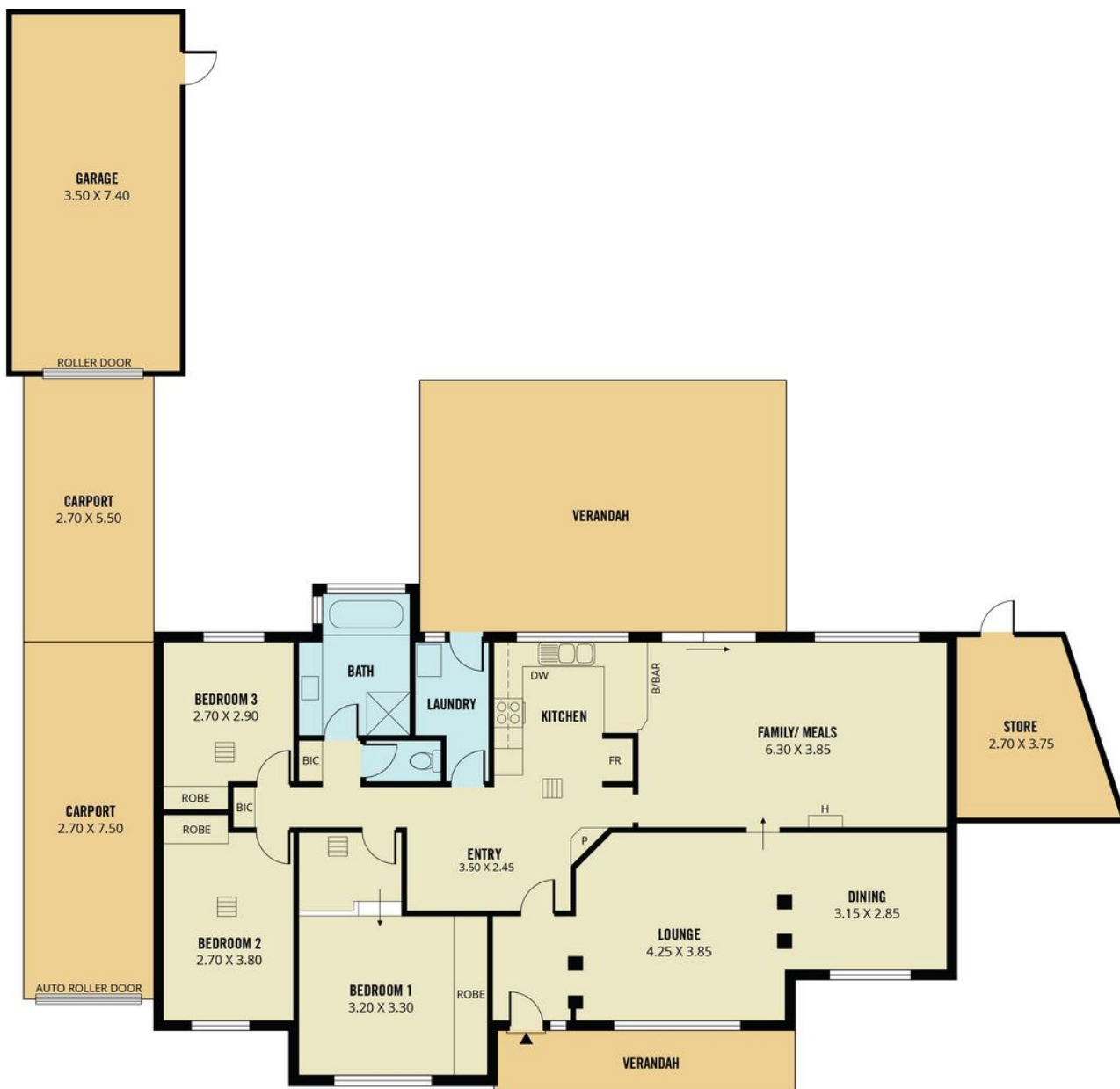
North East, Shop 2, 1007 North East Road, RIDGEHAVEN SA 5097
greenwithgoldengrove.ljhooker.com.au | info@ljhsupport.com.au



Disclaimer: All information contained therein is gathered from relevant third parties sources.

We cannot guarantee or give any warranty about the information provided. Interested parties must rely solely on their own enquiries.

**LJ Hooker Greenwith | Golden Grove
| Mawson Lakes | Modbury
(08) 8289 6660**



Scale in metres. This drawing is for illustration purposes only. All measurements are approximate and details intended to be relied upon should be independently verified.

Produced by The Fotobase Group



**LJ Hooker Greenwith | Golden Grove
| Mawson Lakes | Modbury
(08) 8289 6660**

Disclaimer: All information contained therein is gathered from relevant third parties sources. We cannot guarantee or give any warranty about the information provided. Interested parties must rely solely on their own enquiries.