

Surfers Paradise, 8/16 Markwell Avenue

Top-Floor Beachside Apartment —Prime Location & Exceptional Value!

Nestled just 170m from the golden sands of Surfers Paradise beach, this top-floor, north-facing apartment offers the ultimate coastal lifestyle. Designed to capture natural light and refreshing sea breezes, the open-plan layout seamlessly connects to a front-facing balcony, providing the perfect spot to unwind and enjoy the surroundings.

With everything at your doorstep, from world-class beaches to vibrant dining and shopping precincts, this is an incredible opportunity for investors or buyers looking to secure a prime piece of real estate in one of the Gold Coast's most sought-after locations.

Property Features:

- Front-facing balcony with refreshing sea breeze
- Open-plan lounge and kitchen
- Top floor, north-facing aspect



Disclaimer: All information contained therein is gathered from relevant third parties sources. We cannot guarantee or give any warranty about the information provided. Interested parties must rely solely on their own enquiries.

2

1

1

1

For Sale

Offers Over \$700,000

View

ljhooker.com.au/5GNPF41

Contact

Maxwell Hooper

0401 373 369

mhooper@ljhgc.com.au

LJ Hooker Nerang
(07) 5581 4422

- Walking distance to beach, shops, and restaurants
- Secure underground car park

Investment Details:

- Body corporate fees: \$103.00 per week
- Rental estimate: \$620.00 - \$670.00 per week
- Rates: \$1,721.00 bi-annually

Apartments in this location are in high demand. Don't miss your chance to secure this incredible opportunity.

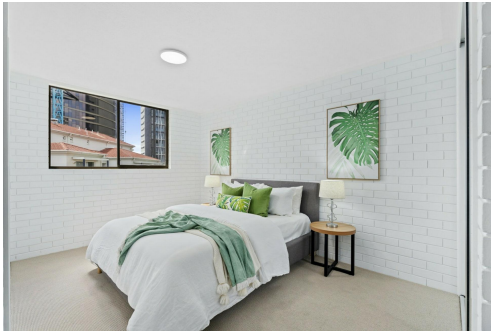
Want to know more or arrange an inspection?
Contact Maxwell Hooper at 0401 373 369 today.

More About this Property

Property ID	5GNPF41
Property Type	Unit
House Size	92 m2
Including	Air Conditioning Pool Outdoor Entertaining

Maxwell Hooper 0401 373 369
Sales Specialist | mhooper@ljhgc.com.au

LJ Hooker Nerang (07) 5581 4422
2-4 New Street, NERANG QLD 4211
nerang.ljhooker.com.au | nerang@ljhgc.com.au





8/16 MARKWELL AVENUE, SURFERS PARADISE

 2  1  1

Internal: 82m² | External: 7m² | Total: 89m²

Whilst every attempt has been made to ensure the accuracy of the floor plan contained here, measurements of doors, windows, rooms and any other item are approximate and no responsibility is taken for any error, omission, or misstatement. This plan is for illustrative purposes only and should only be used as such by any prospective purchaser.

