



## Surfers Paradise, 1603/28 Northcliffe Terrace

SOLD BY ERIN KING & RACHAEL SHERIFF

Positioned opposite the beach in the heart of Surfers Paradise, this one bedroom apartment on the 16th level within the highly sought after building, 'Longbeach' has the preferred Eastern aspect boasting incredible coastline views of coastal foreshore, city skyline and the Pacific Ocean and is only a 10 minute walk to Cavill Avenue.

Step inside to discover a spacious open plan living and dining area, perfect for entertaining guests or relaxing. The light-filled living area seamlessly transitions to a private balcony, where you can soak in panoramic views of the sparkling coastline.

Enjoy the fresh sea breeze from the balcony, or take a short stroll to the beach for a day of sun and surf. With a car space included, parking will never be an issue.

Residents of this exclusive building enjoy access to a range of resort-style amenities,



**Disclaimer:** All information contained therein is gathered from relevant third parties sources. We cannot guarantee or give any warranty about the information provided. Interested parties must rely solely on their own enquiries.

**SOLD**



**For Sale**  
Contact Agent

**View**  
[ljhooker.com.au/K0KHEZ](http://ljhooker.com.au/K0KHEZ)

**Contact**  
**Erin King**  
0439 060 535  
[erin@ljhookerct.com.au](mailto:erin@ljhookerct.com.au)  
**Rachael Sherriff**  
0426 144 540  
[rachael@ljhookerct.com.au](mailto:rachael@ljhookerct.com.au)

**LJ Hooker Coolangatta | Tweed**  
**(07) 5536 5577**

including a swimming pool, gymnasium, tennis court and BBQ area.

Longbeach Apartments are all about the location, just a stone's throw to the beach and just moments from the vibrant dining and entertainment precincts of Surfers Paradise, this apartment offers the ultimate coastal lifestyle.

Renovate and reap the rewards, this apartment is an opportunity not to be missed for first-home buyers, couples, investors and downsizers.

This apartment also presents a prime investment opportunity for an AirBnb or long term rental, with a rental appraisal of \$650-\$700 per week. Currently rented at \$600pw.

The hardest part about living here will be deciding whether to spend your afternoon lazing on the beach, strolling around the shops, or enjoying a long lunch at one of the nearby restaurants.

Apartment features:

- Balcony with stunning ocean views
- Open plan living/dining
- Fully functional kitchen
- Spacious bedroom with wardrobe
- Ambience natural light
- Secure car parking for once vehicle
- Located in the tightly held 'Longbeach'

Building facilities:

- Outdoor pool & spa
- Heated indoor pool
- Sauna, tennis court and gymnasium
- Indoor games room, BBQ area and pergola

Location features:

- Less than 100m to the beach and Surfers Central Oceanway
- Easy access to Gold Coast Highway
- 400m to John Fraser Memorial Park
- 800m to Cavil Avenue
- 1km to Isle of Capri
- 1.5km to Chevron Renaissance Shopping Centre
- Close proximity to world-class dining, shopping experiences and public transport

Be quick this will not last long... contact the exclusive marketing agent for an inspection!

Want to know more?

Contact us to receive the property book with outgoings, floorplan and recent sales within the surrounding area to give you some guide of value.

Erin King - 0439 060 535

Disclaimer:



**LJ Hooker Coolangatta | Tweed**  
**(07) 5536 5577**

**Disclaimer:** All information contained therein is gathered from relevant third parties sources. We cannot guarantee or give any warranty about the information provided. Interested parties must rely solely on their own enquiries.

All information (including but not limited to the property area, floor size, price, address and general property description) is provided as a convenience to you, and has been provided to LJ Hooker by third parties. LJ Hooker is unable to definitively confirm whether the information listed is correct or 100% accurate. LJ Hooker does not accept any liability (direct or indirect) for any injury, loss, claim, damage or any incidental or consequential damages, including but not limited to lost profits or savings, arising out of or in any way connected with the use of any information, or any error, omission or defect in the information, contained on the Website. Information contained on the Website should not be relied upon and you should make your own enquiries and seek legal advice in respect of any property on the Website. Prices displayed on the Website are current at the time of issue, but may change.

## More About this Property

Property ID	K0KHEZ
Property Type	Unit
Including	Intercom Pool Tennis Court Balcony Gym Secure Parking

**Erin King 0439 060 535**

Sales & Marketing Specialist | [erin@ljhookerct.com.au](mailto:erin@ljhookerct.com.au)

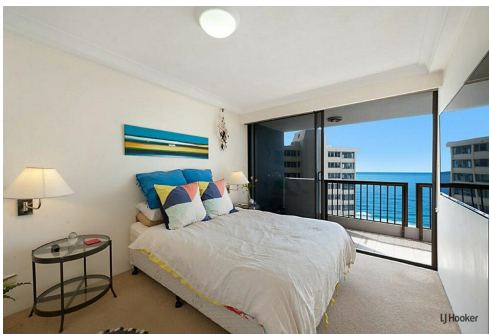
**Rachael Sherriff 0426 144 540**

Sales & Marketing Specialist | [rachael@ljhookerct.com.au](mailto:rachael@ljhookerct.com.au)

**LJ Hooker Coolangatta | Tweed (07) 5536 5577**

5/100 Griffith Street, COOLANGATTA QLD 4225

[coolangattatweed.ljhooker.com.au](http://coolangattatweed.ljhooker.com.au) | [enquiries@ljhookerct.com.au](mailto:enquiries@ljhookerct.com.au)



**Disclaimer:** All information contained therein is gathered from relevant third parties sources. We cannot guarantee or give any warranty about the information provided. Interested parties must rely solely on their own enquiries.

**LJ Hooker Coolangatta | Tweed**  
**(07) 5536 5577**

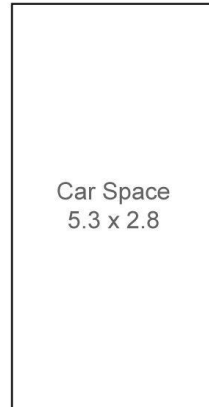


1603/28 Northcliffe Terrace  
Surfers Paradise

BED 1  
BATH 1  
CAR 1

INTERNAL 54sqm  
EXTERNAL 10sqm  
CARSPACE 14.8sqm

TOTAL 78.5sqm



Plans shown are for presentation purposes only and are not part of any legal document or title. They are subject to errors, omissions, inaccuracies and should not be used as a sole and accurate reference. Interested parties should make their own inquiries using independent sources.



LJ Hooker