
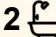
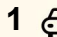




3321/23 Ferny Avenue, Surfers Paradise

2  2  1 

Elevated Chevron Renaissance Living with Sunset Skyline Views

FOR SALE
\$850,000

AGENTS

Simon Tooma
0411 338 048
Stooma@ljhooker.com.au

Cruz Adams
0447 746 686
cadams@ljhooker.com.au

AGENCY

LJ Hooker Surfers Paradise
(07) 5592 0555

Positioned on Level 32 of Tower 3 within the iconic Chevron Renaissance, this well-proportioned two-bedroom, two-bathroom residence presents an exceptional opportunity to secure elevated living in the heart of Surfers Paradise. Defined by its generous layout, sweeping hinterland views and unrivalled central location, the apartment delivers immediate comfort with strong lifestyle and investment appeal.

Spanning 91sqm of liveable space, the residence features a practical open-plan design that maximises natural light and flow. A central kitchen connects seamlessly to the living and dining zones, extending to a generous balcony that captures sunsets and expansive skyline outlooks. Two generous bedrooms include built-in robes, the oversized master complemented by a private ensuite and the second enjoying direct balcony access, positioned adjacent to the main bathroom. Immaculately maintained, the apartment offers immediate comfort with future scope to modernise or enhance.

Chevron Renaissance is renowned for its resort-style facilities and everyday convenience, with direct lift access to Chevron Village's retail and dining precinct below. Coles, local cafés, brilliant

All information contained therein is gathered from relevant third parties sources.
We cannot guarantee or give any warranty about the information provided.
Interested parties must rely solely on their own enquiries.

 **LJ Hooker**

restaurants, the light rail and the world-famous Surfers Paradise beach are all within easy walking distance, reinforcing the building's enduring lifestyle appeal.

Apartment Highlights

- Elevated two (2) bedroom, two (2) bathroom with sweeping hinterland views
- Generous 91 sqm open-plan layout
- Oversized master bedroom with private ensuite with built-in robes
- Second bedroom with private balcony access and built-in robes
- Well-appointed kitchen that seamlessly flows to living and dining areas
- Concealed laundry maximising space
- One (1) secure car space

Building Highlights

- Outdoor lagoon pool plus heated indoor 25m lap pool
- Traditional saunas (2), spa, and residents' lounge
- Fully equipped gymnasium and games room
- BBQ areas set within lush, landscaped gardens
- Direct lift access to Chevron Renaissance shopping precinct
- Excellent on-site management

For further details or to arrange a private inspection, please contact:

Simon Tooma | 0411 338 048

Cruz Adams | 0447 746 686

Disclaimer: LJ Hooker Surfers Paradise and its agents make no representation or warranty as to the accuracy, completeness or reliability of the information contained herein. All information provided is gathered from sources we consider reliable; however, we cannot guarantee its accuracy and interested parties should rely on their own enquiries. Dimensions, areas and figures are approximate and subject to change without notice.

MORE DETAILS

Property ID FCDHBY
Property Type Unit
House Size 91 m2
Including Ensuite
Air Conditioning
Intercom
Pool
Spa
Balcony
Gym
Dishwasher
Built-in-Robes
Secure Parking
Area Views
Car Parking - Basement
Carpeted
City Views
Close to Schools
Close to Shops

Simon Tooma 0411 338 048

General Manager | Stooma@ljhooker.com.au

Cruz Adams 0447 746 686

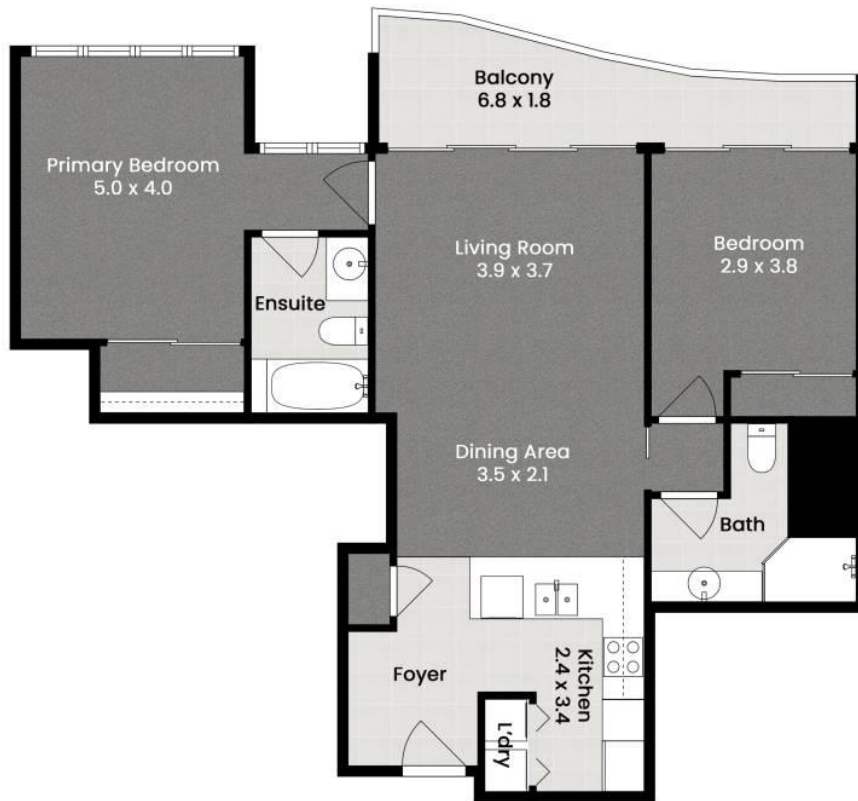
Sales Associate | cadams@ljhooker.com.au

LJ Hooker Surfers Paradise (07) 5592 0555

Shop 1 & 2, 3131, Surfers Paradise Boulevard, SURFERS
PARADISE QLD 4217

surfersparadise.ljhooker.com.au | reception.surfers@ljhooker.com.au





3321/23 Ferny Avenue
Chevron Renaissance Surfers Paradise

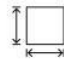


LJ Hooker
Surfers Paradise

 2

 2

 1

 91 sqm

Internal: 82 sqm

External: 9 sqm

Disclaimer: This floor-plan is intended as a guide only and may not be drawn to scale. All measurements, locations, and features are approximate and should be verified independently. No warranty is given as to the accuracy of the floor-plan or its suitability for any particular purpose. All measurements in metres.

Produced by **Mink Film Co.**