

## Surfers Paradise, 2905/4 The Esplanade

Luxury Beachfront Property With Space, Privacy And Uninterrupted North East Aspect

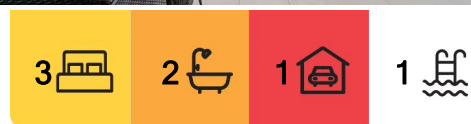
Allow yourself to be captivated by apartment 2905, a stunning beachfront unit encompassing approximately 162m<sup>2</sup> situated on a high floor with uninterrupted north views. The innovative design floods the living spaces with natural light, showcasing breathtaking views of the golden sands and glistening ocean that stretch all the way to Chevron Island, the main river, and beyond, with the views corridors above neighbouring buildings.

This remarkable unit is a must-see for those seeking to secure a premium property with stunning ocean and skyline views with complete privacy.

Nestled amidst the vibrant beachfront landscape of Surfers Paradise, Peppers Soul stands as an iconic symbol of sophistication and elegance. This award-winning architectural masterpiece seamlessly blends into its surroundings, offering unparalleled views and a truly luxurious beachside living experience.



**Disclaimer:** All information contained therein is gathered from relevant third parties sources. We cannot guarantee or give any warranty about the information provided. Interested parties must rely solely on their own enquiries.



**For Sale**  
POA

**View**  
[l.jhooker.com.au/BUJ0F](https://l.jhooker.com.au/BUJ0F)

**Contact**  
**Ross Lukin**  
0419 555 022  
[ross.lukin@l.jhooker.com.au](mailto:ross.lukin@l.jhooker.com.au)  
**Katriya De Vincentiis**  
0410 620 845  
[kat.devincentiis@l.jhooker.com.au](mailto:kat.devincentiis@l.jhooker.com.au)

**LJ Hooker Ashmore**  
**(07) 5526 9722**

Soul is a world-class residence that sets the standard for luxury living on the Gold Coast. With its uncompromising design and impeccable finishes, it offers a lifestyle of sophistication and leisure amidst the vibrant energy of Surfers Paradise.

Featuring an array of five-star resort amenities, residents of Soul can enjoy a host of leisure and recreational activities without ever leaving the property. From tiered outdoor pools and a majestic grand lobby to a gourmet kitchen and private balconies in each bedroom, every aspect of this exquisite property is designed to redefine luxury living.

Experience the epitome of beachside living with a touch of cosmopolitan flair at this prestigious address on the Gold Coast.

Available for private inspection or open home advertised times.

Disclaimer: We have in preparing this information used our best endeavours to ensure that the information contained herein is true and accurate. Prospective purchasers should make their own enquiries to satisfy themselves as to its accuracy. Although high standards have been used in the preparation of this document, no legal responsibility can be accepted by LJ Hooker Ashmore or any loss or damage resulting from the content or the use of this information. Any photographs show only certain parts of the property as it appeared at the time they were taken. Areas, amounts, measurements, distances and all other numerical information is approximate only.

## More About this Property

Property ID	BUJ0F
Property Type	Unit
House Size	162 m2
Including	Ensuite Air Conditioning Ducted Cooling Ducted Heating Intercom Pool Balcony Gym Dishwasher Built-in-Robes Secure Parking Area Views Beach Front Car Parking - Basement Close to Schools Close to Shops

**Ross Lukin 0419 555 022**

Sales Professional | Director | [ross.lukin@ljhooker.com.au](mailto:ross.lukin@ljhooker.com.au)

**Katriya De Vincentiis 0410 620 845**

Sales Professional Katriya De Vincentiis 4758164 | [kat.devincentiis@ljhooker.com.au](mailto:kat.devincentiis@ljhooker.com.au)

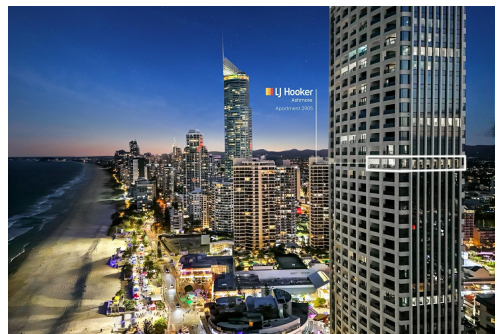
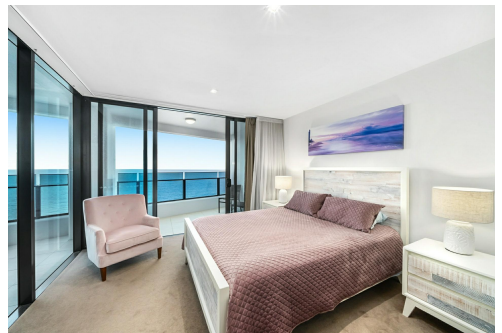
**LJ Hooker Ashmore (07) 5526 9722**

167 Cotlew Street, ASHMORE QLD 4214

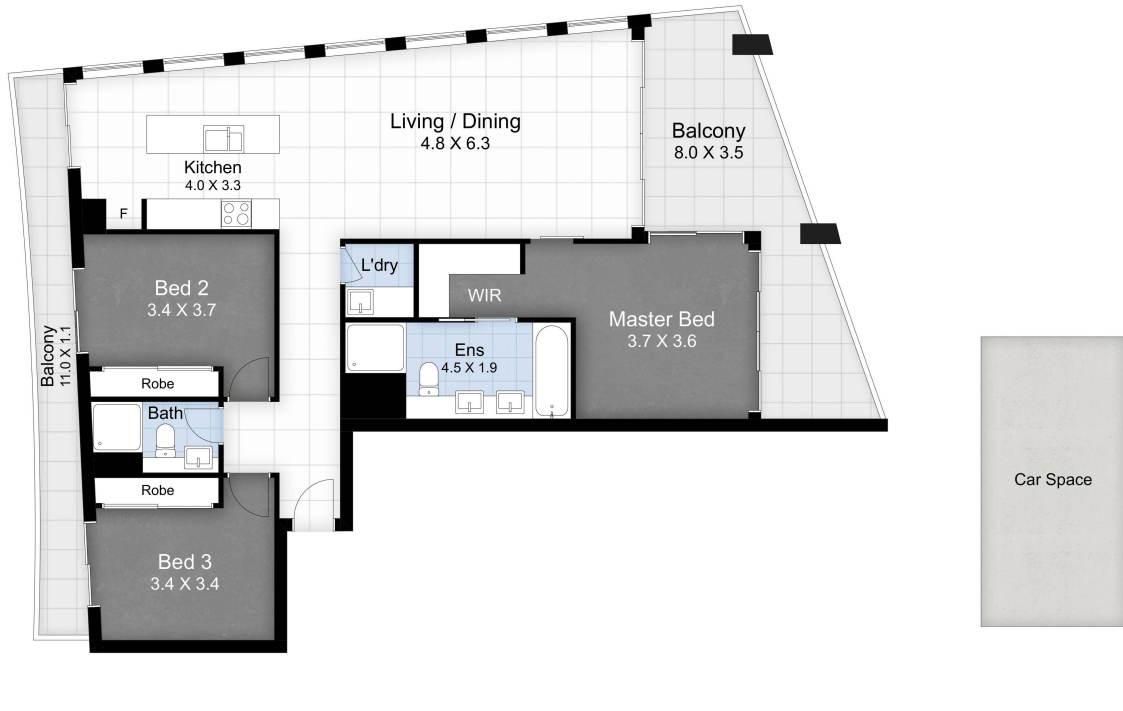
[ashmore.ljhooker.com.au](http://ashmore.ljhooker.com.au) | [admin.ashmore@ljhooker.com.au](mailto:admin.ashmore@ljhooker.com.au)



**Disclaimer:** All information contained therein is gathered from relevant third parties sources. We cannot guarantee or give any warranty about the information provided. Interested parties must rely solely on their own enquiries.



**LJ Hooker Ashmore**  
**(07) 5526 9722**



2905/4 The Esplanade, Surfers Paradise

Internal - 131m<sup>2</sup>

External - 31m<sup>2</sup>

Total - 162m<sup>2</sup>

Dimensions are approximate, interested parties should do their own due diligence. The Floor Planners take no responsibilities for inaccurate measurements or errors



**LJ Hooker Ashmore**  
(07) 5526 9722

**Disclaimer:** All information contained therein is gathered from relevant third parties sources. We cannot guarantee or give any warranty about the information provided. Interested parties must rely solely on their own enquiries.