






2351/23 Ferny Avenue, Surfers Paradise

2  1  1 

Elevated Corner Residence with Stunning River and Hinterland Vistas

Perched on Level 35 of Tower 2 within the iconic Chevron Renaissance, this hinterland facing Two-Bedroom, One-Bathroom presents an outstanding opportunity to secure elevated living in the heart of Surfers Paradise. Defined by its corner position, expansive outlooks, and functional layout, the residence captures sweeping hinterland & main river views. Chevron Renaissance delivers the ultimate in resort-style living, this is one not to be missed.

Spanning 83sqm of livable space, the residence features a functional open-plan design that maximises space and natural light. The living and dining zones, enhanced by vinyl floorboards, extend seamlessly to the main balcony - an ideal setting to enjoy sunsets and the evolving skyline beyond. The open-plan kitchen offers a practical layout with scope to enhance over time and connects directly to a concealed laundry. Accommodation comprises two generously proportioned bedrooms, each enjoying elevated outlooks and excellent natural light. The oversized master suite opens to its own private balcony and is serviced by a well-appointed ensuite with dual access, ideal for guests. The second bedroom benefits from the

FOR SALE
\$800,000

AGENTS

Simon Tooma
0411 338 048
Stooma@ljhooker.com.au

Cruz Adams
0447 746 686
cadams@ljhooker.com.au

AGENCY

LJ Hooker Surfers Paradise
(07) 5592 0555

All information contained therein is gathered from relevant third parties sources.
We cannot guarantee or give any warranty about the information provided.
Interested parties must rely solely on their own enquiries.

 **LJ Hooker**

corner position, enhancing both privacy and outlook.

Chevron Renaissance is widely regarded as one of Surfers Paradise's premier residential and lifestyle addresses, offering an indoor heated 25m lap pool, three outdoor pools, spa, two traditional saunas, fully equipped gymnasium, residents' lounge, games room, landscaped gardens, and BBQ areas, all complemented by excellent on-site management and direct lift access to the retail precinct below.

Positioned in an unrivalled central location, residents are moments from the beach, light rail, dining, shopping, and entertainment. Coles and Woolworths are accessible via lift, while Surfers Paradise's renowned cafés, restaurants, and coastline are all within easy walking distance. The combination of position, amenity, and lifestyle places this residence among the city's most appealing offerings.

Apartment Highlights

- Corner Two-bedroom (2), One-bathroom (1) Residence
- Elevated Level 35 position, Stunning Hinterland Vistas
- Generous 83sqm functional Open-plan layout
- Large Living and Dining Space seamlessly flow to Main Balcony
- Oversized Main bedroom with Ensuite and Private Balcony
- Corner layout enhancing privacy and natural light
- Concealed functional laundry
- Available furnished upon request

Building Highlights

- Outdoor lagoon pool plus heated indoor 25m lap pool
- Traditional saunas (2), spa, and residents' lounge
- Fully equipped gymnasium and games room
- BBQ areas set within lush, landscaped gardens
- Direct lift access to Chevron Renaissance shopping precinct
- Excellent on-site management

For further details or to arrange a private inspection, contact the team.

Simon Tooma | 0411 338 048

Cruz Adams | 0447 746 686

Disclaimer: LJ Hooker Surfers Paradise and its agents make no representation or warranty as to the accuracy, completeness or reliability of the information contained herein. All information provided is gathered from sources we consider reliable; however, we cannot guarantee its accuracy and interested parties should rely on their own enquiries. Dimensions, areas and figures are approximate and subject to change without notice.

MORE DETAILS

Property ID	FBJHBY
Property Type	Unit
House Size	83 m2
Including	Ensuite
	Air Conditioning
	Pool
	Balcony
	Dishwasher
	Floorboards
	Built-in-Robes
	Secure Parking
	Close to Shops
	Close to Transport
	Lift Installed
	Pool
	River Views
	Spa

Simon Tooma 0411 338 048

General Manager | Stooma@ljhooker.com.au

Cruz Adams 0447 746 686

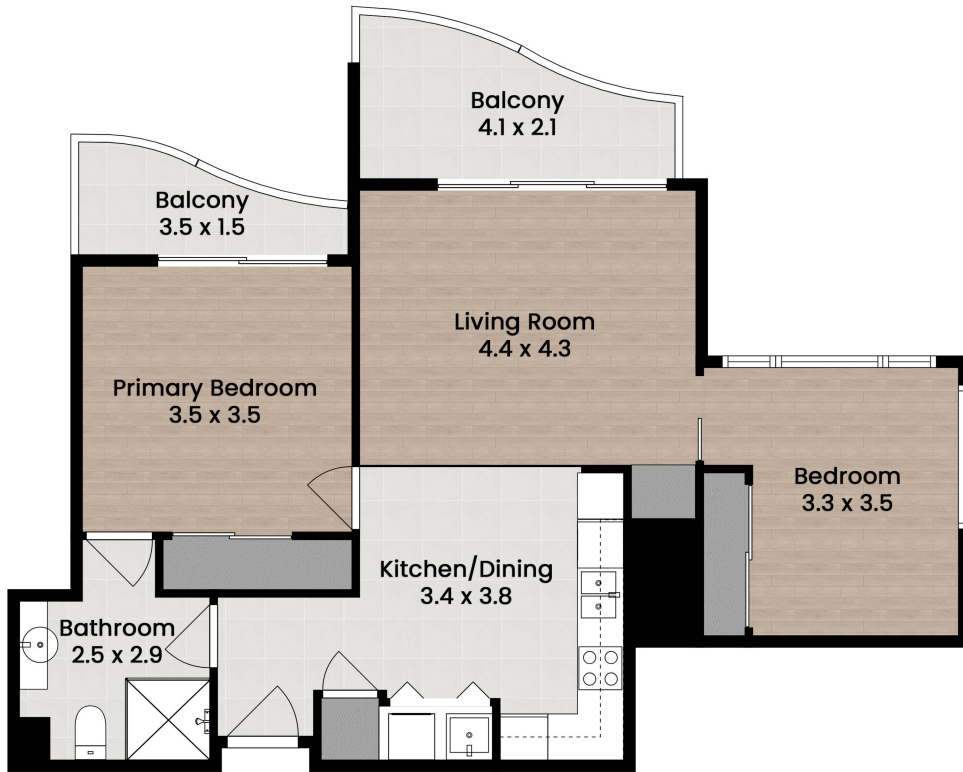
Sales Associate | cadams@ljhooker.com.au

LJ Hooker Surfers Paradise (07) 5592 0555

Shop 1 & 2, 3131, Surfers Paradise Boulevard, SURFERS
PARADISE QLD 4217

surfersparadise.ljhooker.com.au | reception.surfers@ljhooker.com.au





2351/23 Ferny Avenue
Chevron Renaissance Surfers Paradise

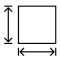


LJ Hooker
Surfers Paradise

 2

 1

 1

 83 sqm

Internal: 70 sqm

External: 13 sqm

Disclaimer: This floor-plan is intended as a guide only and may not be drawn to scale. All measurements, locations, and features are approximate and should be verified independently. No warranty is given as to the accuracy of the floor-plan or its suitability for any particular purpose. All measurements in metres.

Produced by Mink Film Co.