






2326/23 Ferny Avenue, Surfers Paradise

2  1  1 

Rare Corner Residence with Panoramic Hinterland and River Views

FOR SALE

Offers Over \$800,000

AGENTS

Simon Tooma
0411 338 048
Stooma@ljhooker.com.au

Cruz Adams
0447 746 686
cadams@ljhooker.com.au

AGENCY

LJ Hooker Surfers Paradise
(07) 5592 0555

Perched on Level 32 of Tower 2 within the iconic Chevron Renaissance, this rare corner residence presents an outstanding opportunity to secure executive style living in the heart of Surfers Paradise. With its high ceilings, this well appointed two-bedroom one-bathroom residence perfectly showcases the picturesque hinterland and river views. Renowned for its lifestyle appeal and resort-style amenity, Chevron Renaissance continues to stand as one of Surfers Paradise's most sought-after residential addresses.

Extending 83sqm of internal living, this well-designed residence offers a functional open-plan layout enhanced by high ceilings, allowing natural light to flow throughout the home. The spacious living and dining areas connect seamlessly to the main balcony. The open-plan kitchen provides a practical design with excellent usability and the convenience of a concealed laundry. The apartment features two generously sized bedrooms, each enjoying their own unique outlook. The oversized master suite benefits from access to its own private balcony, while the second bedroom is filled with natural light thanks to full-height floor-to-ceiling windows.

All information contained therein is gathered from relevant third parties sources.
We cannot guarantee or give any warranty about the information provided.
Interested parties must rely solely on their own enquiries.

 **LJ Hooker**

Chevron Renaissance is widely regarded as one of Surfers Paradise's premier residential and lifestyle addresses, offering a lagoon-style outdoor pool, an addition outdoor and indoor heated 25m lap pool, spa, two traditional saunas, fully equipped gymnasium, residents' lounge, games room, lush landscaped gardens and BBQ areas, all complemented by professional on-site management and direct lift access to the retail precinct below.

Positioned in an unrivalled central location, residents are moments from the beach, light rail, shopping, dining and entertainment. Coles and Woolworths are accessible via lift, while Surfers Paradise's renowned cafés, restaurants and coastline are all within easy walking distance. The combination of elevation, amenity and location continues to make Chevron Renaissance one of the city's most appealing lifestyle and investment opportunities.

Apartment Highlights

- Rare Corner two-bedroom (2), one-bathroom (1) residence
- Level 32 position, panoramic hinterland and river views
- Generous 83sqm functional open-plan layout with high ceilings
- Large living and dining spaces seamlessly flow to main balcony
- Oversized main bedroom with ensuite and private balcony
- Concealed functional laundry

Building Highlights

- Huge outdoor lagoon pool
- Outdoor pool plus heated indoor 25m lap pool
- Traditional saunas (2), spa, and residents' lounge
- Fully equipped gymnasium and games room
- BBQ areas set within lush, landscaped gardens
- Direct lift access to Chevron Renaissance shopping precinct
- Excellent on-site management

For further details or to arrange a private inspection, contact the team.

Simon Tooma | 0411 338 048

Cruz Adams | 0447 746 686

Disclaimer: LJ Hooker Surfers Paradise and its agents make no representation or warranty as to the accuracy, completeness or reliability of the information contained herein. All information provided is gathered from sources we consider reliable; however, we cannot guarantee its accuracy and interested parties should rely on their own enquiries. Dimensions, areas and figures are approximate and subject to change without notice.

MORE DETAILS

Property ID FDGHBV
Property Type Unit
House Size 83 m2
Including Ensuite
Air Conditioning
Ducted Cooling
Ducted Heating
Pool
Spa
Balcony
Gym
Dishwasher
Built-in-Robes
Secure Parking
Area Views
Car Parking - Basement
Carpeted
City Views
Close to Schools
Close to Shops

Simon Tooma 0411 338 048

General Manager | Stooma@ljhooker.com.au

Cruz Adams 0447 746 686

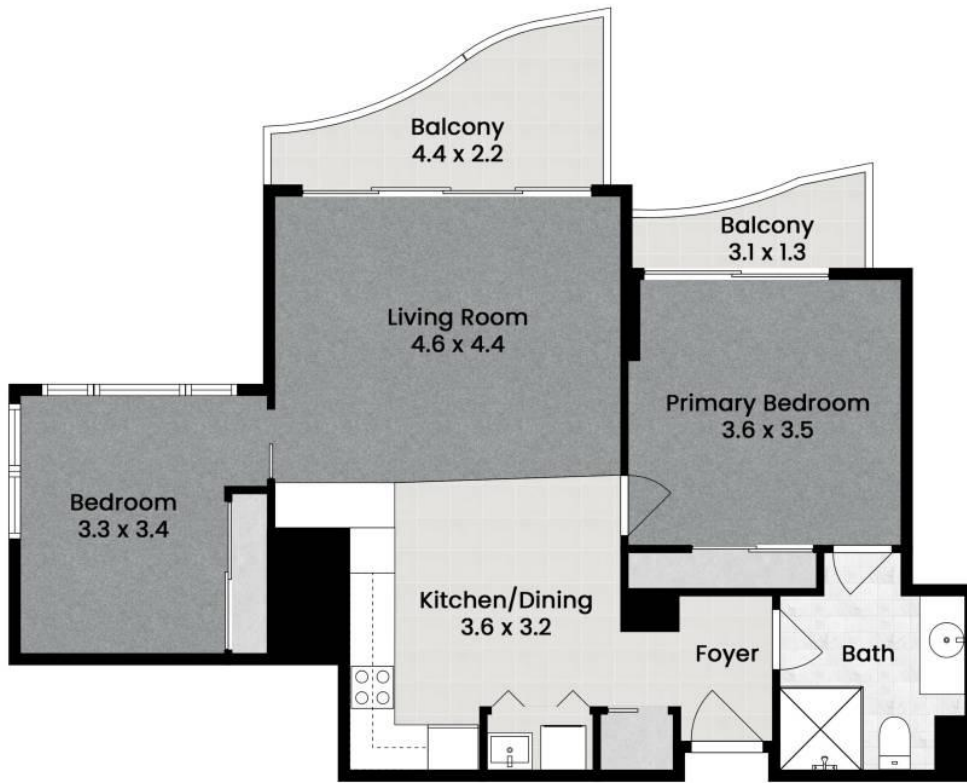
Sales Associate | cadams@ljhooker.com.au

LJ Hooker Surfers Paradise (07) 5592 0555

Shop 1 & 2, 3131, Surfers Paradise Boulevard, SURFERS
PARADISE QLD 4217

surfersparadise.ljhooker.com.au | reception.surfers@ljhooker.com.au





2326/23 Ferny Avenue
Chevron Renaissance Surfers Paradise



LJ Hooker
Surfers Paradise

2

1

1

83 sqm

Internal: 70 sqm

External: 13 sqm

Disclaimer: This floor-plan is intended as a guide only and may not be drawn to scale. All measurements, locations, and features are approximate and should be verified independently. No warranty is given as to the accuracy of the floor-plan or its suitability for any particular purpose. All measurements in metres.

Produced by **Mink Film Co.**