

2191/23 Ferny Avenue, Surfers Paradise

Rare Corner Residence with Stunning River and Hinterland Outlook

Perched on Level 19 of Tower 2 within the iconic Chevron Renaissance, this hinterland-facing two-bedroom, one-bathroom residence with secure car accommodation presents an outstanding opportunity to secure elevated living in the heart of Surfers Paradise. Defined by its functional layout and expansive outlooks, the apartment captures sweeping hinterland and main river views. Chevron Renaissance delivers the ultimate in resort-style living, this is one not to be missed.

Spanning 83sqm of liveable space, the residence features a functional open-plan design that maximises space and natural light. The living and dining zones extend seamlessly to the main balcony - an ideal setting to enjoy sunsets and the evolving skyline beyond. The open-plan kitchen offers a practical layout with scope to enhance over time and connects directly to a concealed laundry. Accommodation comprises two generously proportioned bedrooms, each enjoying elevated outlooks and excellent natural light. The oversized master suite opens to its own private balcony and is serviced by a well-appointed ensuite with dual access, ideal for guests. The second

2 🚗 1 🚗 1 🚗

FOR SALE

Offers Over \$800,000

VIEW

Tue 23rd Jun @ 1:00PM - 1:30PM

AGENTS

Simon Tooma
0411 338 048
Stooma@ljhooker.com.au

Cruz Adams
0447 746 686
cadams@ljhooker.com.au

AGENCY

LJ Hooker Surfers Paradise
(07) 5592 0555

All information contained therein is gathered from relevant third parties sources. We cannot guarantee or give any warranty about the information provided. Interested parties must rely solely on their own enquiries.

 **LJ Hooker**

bedroom is well positioned and benefits from natural light and elevated outlooks.

Chevron Renaissance is widely regarded as one of Surfers Paradise's premier residential and lifestyle addresses, offering an indoor heated 25m lap pool, two outdoor pools, spa, two traditional saunas, fully equipped gymnasium, residents' lounge, games room, landscaped gardens, and BBQ areas, all complemented by excellent on-site management and direct lift access to the retail precinct below.

Positioned in an unrivalled central location, residents are moments from the beach, light rail, dining, shopping, and entertainment. Coles and Woolworths are accessible via lift, while Surfers Paradise's renowned cafés, restaurants, and coastline are all within easy walking distance. The combination of position, amenity, and lifestyle places this residence among the city's most appealing offerings.

Apartment Highlights

- Two (2) bedroom, one (1) bathroom residence with one (1) secure carpark
- Level 19 position capturing sweeping hinterland and river outlooks
- Generous 83sqm functional open-plan layout
- Living and dining zones flowing seamlessly to the main balcony
- Oversized master bedroom with ensuite and private balcony
- Two well-proportioned bedrooms with elevated outlooks
- Concealed functional laundry

Building Highlights

- Huge outdoor resort style lagoon pool
- Outdoor leisure pool and heated indoor 25m lap pool
- Traditional saunas (2), spa, and residents' lounge
- Fully equipped gymnasium and games room
- BBQ areas set within lush, landscaped gardens
- Direct lift access to Chevron Renaissance shopping precinct
- Excellent on-site management

For further details or to arrange a private inspection, contact the team.

Simon Tooma | 0411 338 048
Cruz Adams | 0447 746 686

Disclaimer: LJ Hooker Surfers Paradise and its agents make no representation or warranty as to the accuracy, completeness or reliability of the information contained herein. All information provided is gathered from sources we consider reliable; however, we cannot guarantee its accuracy and interested parties should rely on their own enquiries. Dimensions, areas and figures are approximate and subject to change without notice.

MORE DETAILS

Property ID FDVHBY
Property Type Unit
House Size 83 m2
Including Ensuite
Air Conditioning
Ducted Cooling
Ducted Heating
Intercom
Pool
Spa
Balcony
Gym
Dishwasher
Outdoor Entertaining
Built-in-Robes
Secure Parking
Remote Garage
Area Views
Car Parking - Basement
Carpeted
City Views
Close to Schools
Close to Shops

Simon Tooma 0411 338 048

General Manager | Stooma@ljhooker.com.au

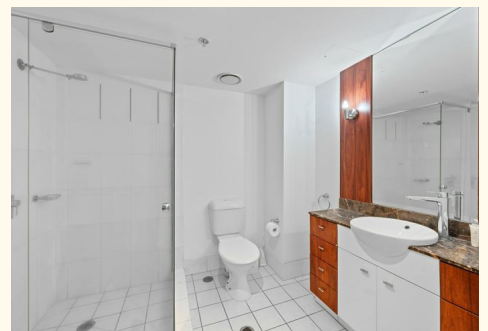
Cruz Adams 0447 746 686

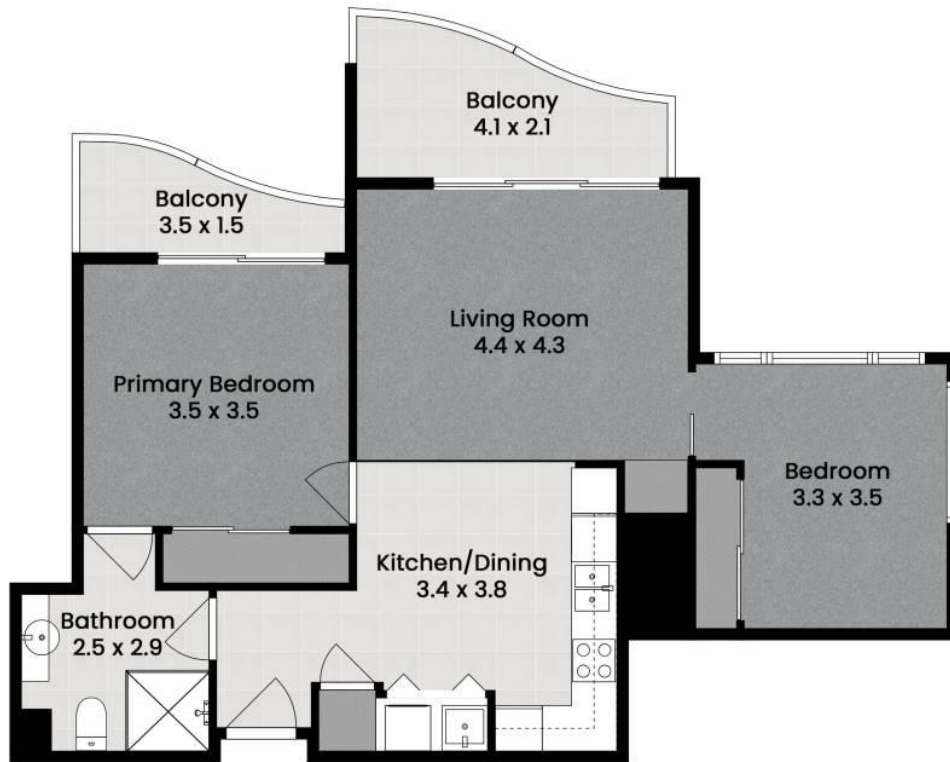
Sales Associate | cadams@ljhooker.com.au

LJ Hooker Surfers Paradise (07) 5592 0555

Shop 1 & 2, 3131, Surfers Paradise Boulevard, SURFERS
PARADISE QLD 4217

surfersparadise.ljhooker.com.au | reception.surfers@ljhooker.com.au





2191/23 Ferny Avenue
Chevron Renaissance Surfers Paradise

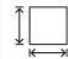


LJ Hooker
Surfers Paradise

 2

 1

 1

 83 sqm

Internal: 70 sqm

External: 13 sqm

Disclaimer: This floor-plan is intended as a guide only and may not be drawn to scale. All measurements, locations, and features are approximate and should be verified independently. No warranty is given as to the accuracy of the floor-plan or its suitability for any particular purpose. All measurements in metres.

Produced by **Mink Film Co.**