
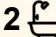
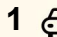


30D/80 The Esplanade, Surfers Paradise

2  2  1 

Beachfront Apartment with a Premium Renovation

Located on the 30th floor of the landmark Imperial Surf, this fully renovated beachfront apartment offers a well-proportioned 122 sqm floorplan and a highly sought-after north-east aspect. The elevated position provides expansive views encompassing the Pacific Ocean, Nerang River, hinterland and the Surfers Paradise skyline.

The apartment has been comprehensively renovated to a high standard, resulting in a modern and functional coastal residence. The open-plan living and dining area is designed to maximise natural light and outlook, with direct access to a generous balcony that supports both day-to-day living and entertaining. The layout is efficient and well balanced, with clear separation between living and accommodation zones. Accommodation comprises two generously sized bedrooms, both positioned to take advantage of the apartment's outlook and natural light. The primary bedroom is supported by a contemporary ensuite, while the second bedroom is serviced by a separate, fully renovated bathroom. Storage has been carefully considered throughout, and the overall presentation reflects a consistent, high-quality finish.

Imperial Surf is a well-established and tightly held beachfront building,

FOR SALE
\$1,250,000

AGENTS

Simon Tooma
0411 338 048
Stooma@ljhooker.com.au

Ricky Zahab
0403 511 808
rzahab@ljhooker.com.au

AGENCY

LJ Hooker Surfers Paradise
(07) 5592 0555

All information contained therein is gathered from relevant third parties sources.
We cannot guarantee or give any warranty about the information provided.
Interested parties must rely solely on their own enquiries.

 **LJ Hooker**

recognised for its scale, direct beach frontage and comprehensive resident amenities. The building is positioned opposite a patrolled surf beach and immediately adjacent to the G:link light rail station, providing excellent connectivity. Resident facilities include indoor and outdoor swimming pools, spa, tennis courts, sauna and steam room, as well as BBQ and communal entertaining areas. Retail, dining and entertainment precincts are located within close proximity.

Apartment Summary

- bedroom, two-bathroom configuration
- Total area approximately 122 sqm
- Fully renovated throughout
- 30th-floor position with north-east aspect
- Panoramic ocean, river, hinterland and skyline views
- Open-plan living and dining with balcony access
- One secure underground car space

Building Summary —Imperial Surf

- Direct beachfront location
- Indoor and outdoor swimming pools
- Spa, sauna and steam room
- Tennis courts
- BBQ and communal entertaining areas
- Opposite patrolled surf beach
- Adjoining G:link light rail station

This property represents a rare opportunity to secure a fully renovated, high-floor beachfront apartment within one of Surfers Paradise's most established residential towers. Inspection is strongly recommended.

Ricky Zahab

0403 511 808 | rzahab@ljhooker.com.au

Disclaimer: All information is provided in good faith. Buyers must rely on their own enquiries. Figures are approximate.

MORE DETAILS

Property ID	FBPHBY
Property Type	Apartment

Simon Tooma 0411 338 048

General Manager | Stooma@ljhooker.com.au

Ricky Zahab 0403 511 808

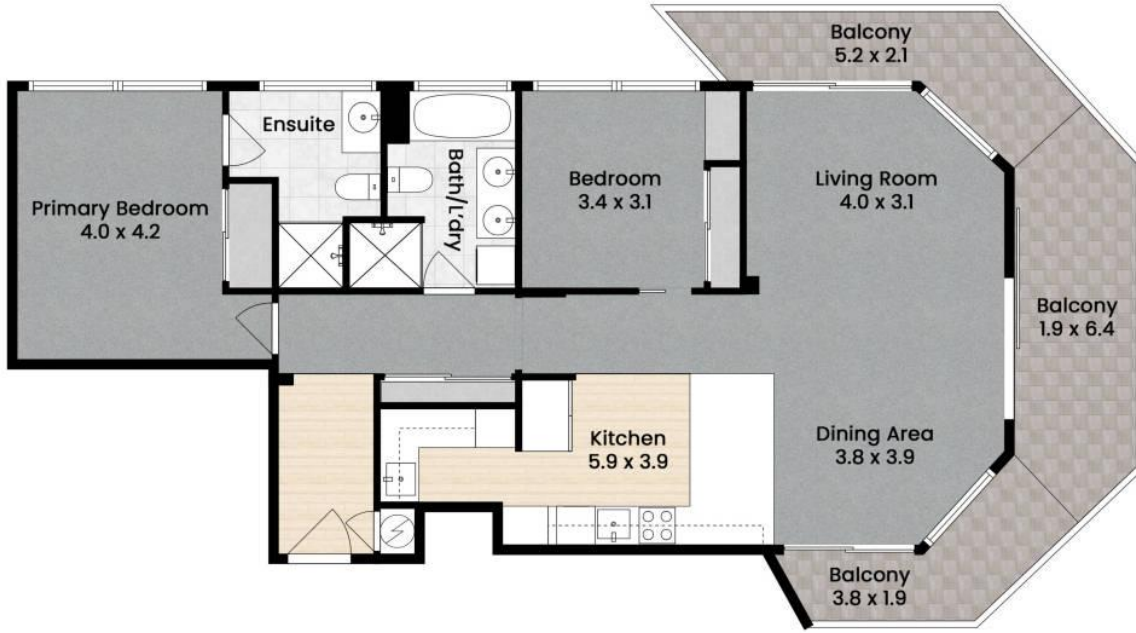
Sales Associate | rzahab@ljhooker.com.au


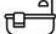
LJ Hooker Surfers Paradise (07) 5592 0555

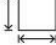
Shop 1 & 2, 3131, Surfers Paradise Boulevard, SURFERS PARADISE QLD 4217

surfersparadise.ljhooker.com.au | reception.surfers@ljhooker.com.au





-  2
-  2
-  1

 122 sqm
 Internal: 100 sqm
 External: 22 sqm

Disclaimer: This floor-plan is intended as a guide only and may not be drawn to scale. All measurements, locations, and features are approximate and should be verified independently. No warranty is given as to the accuracy of the floor-plan or its suitability for any particular purpose. All measurements in metres.
 Produced by Mink Film Co.

30 D Imperial Surf
80 The Esplanade Surfers Paradise

