

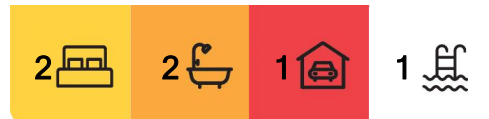
Surfers Paradise, 22A/80 The Esplanade

Beachfront Apartment with Unparalleled Views

This property offers a rare chance to own a premium beachfront apartment in the heart of Surfers Paradise. This apartment ticks all the boxes-views, location, and lifestyle-this is an opportunity not to be missed.

Perched on a desirable mid-level floor of the beachfront Imperial Surf building, 22A/80 The Esplanade is a stunning two-bedroom, two-bathroom apartment showcasing uninterrupted views, stretching all the way south along the coastline. Showcasing the vibrant Surfers Paradise skyline, this sought-after A-style corner apartment captures the essence of luxury coastal living.

Mostly in original condition this an opportunity to design the apartment exactly how you would like it, from the kitchen to the master ensuite you can put your mark on the property, this a chance to make a highly desirable location home with a view that is unforgettable.



For Sale
Offers over \$1,260,000

View
By Appointment

Contact
Simon Tooma
0411 338 048
Stooma@ljhooker.com.au

Ricky Zahab
0403 511 808
rzahab@ljhooker.com.au



Disclaimer: All information contained therein is gathered from relevant third parties sources. We cannot guarantee or give any warranty about the information provided. Interested parties must rely solely on their own enquiries.

LJ Hooker Surfers Paradise
(07) 5592 0555

Property Features:

- * Two bedrooms, two bathrooms, and one secure underground parking
- * Prime position, corner apartment on the front of the building
- * Surfers Paradise skyline views
- * Two Bedrooms offer ocean views and captivating skyline views
- * Spacious balcony

Building Features:

- * Outdoor and indoor pools
- * Spa
- * Tennis courts
- * BBQ and entertainment area
- * Sauna and steam room
- * Opposite patrolled surf beach
- * Adjacent to G link light rail station
- * Moments from entertainment, shopping and restaurants
- * Convenient access to transportation

A rare opportunity to secure a luxury beachfront apartment in a world-class location.

Inspections are essential.

Simon Tooma

0411 338 048 | stooma@ljhooker.com.au

Ricky Zahab

0403 511 808 | rzahab@ljhooker.com.au



LJ Hooker Surfers Paradise
(07) 5592 0555

Disclaimer: All information contained therein is gathered from relevant third parties sources.
We cannot guarantee or give any warranty about the information provided. Interested parties must rely solely on their own enquiries.

More About this Property

Property ID	F9PHBY
Property Type	Apartment
House Size	120 m2
Including	Ensuite Air Conditioning Intercom Pool Balcony Secure Parking Area Views Beach Front Close to Schools Close to Shops Close to Transport Lift Installed

Simon Tooma 0411 338 048

General Manager | Stooma@ljhooker.com.au

Ricky Zahab 0403 511 808

Sales Associate | rzahab@ljhooker.com.au

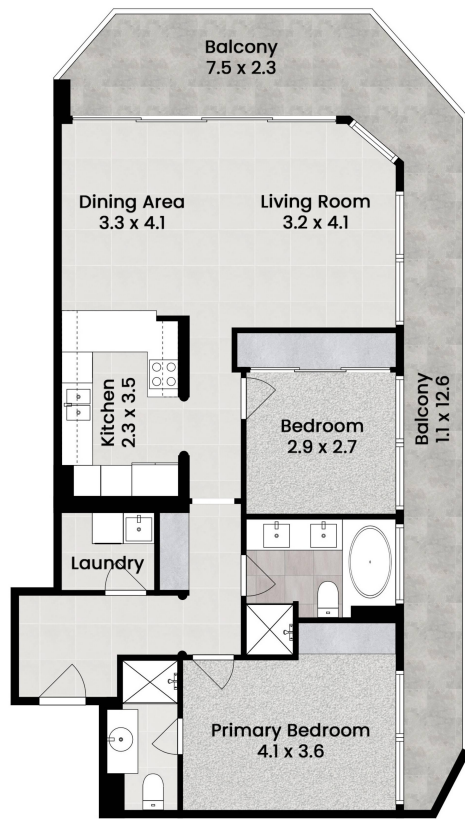
LJ Hooker Surfers Paradise (07) 5592 0555

Shop 1 & 2, 3131, Surfers Paradise Boulevard, SURFERS PARADISE QLD 4217
surfersparadise.ljhooker.com.au | reception.surfers@ljhooker.com.au



Disclaimer: All information contained therein is gathered from relevant third parties sources.
We cannot guarantee or give any warranty about the information provided. Interested parties must rely solely on their own enquiries.

LJ Hooker Surfers Paradise
(07) 5592 0555



22a Imperial Surf
80 The Esplanade, Surfers Paradise

LJ Hooker
Surfers Paradise

2

2

1

120 sqm

Internal: 90 sqm

External: 30 sqm

Disclaimer: This floor-plan is intended as a guide only and may not be drawn to scale. All measurements, locations, and features are approximate and should be verified independently. No warranty is given as to the accuracy of the floor-plan or its suitability for any particular purpose. All measurements in metres.

Produced by **Mink Film Co.**

