



## Surf Beach, 1/4 Eric Fenning Drive

### Downsizers dream

This single level sweetheart would suit an investor, downsizer or first home buyer wanting in at entry level. This freshly painted end unit has 2 bedrooms one with an ensuite, a second bathroom, a small yard and a single garage with internal access. There is new flooring down and a dishwasher as well and in a complex of only 8.

Nicely maintained grounds in a quiet complex. Close to Surf Beach village shops and a choice of 3 popular beaches nearby, the location is fabulous for a little holiday unit as well, as you can jump on the George Bass Drive and be in town in approx 10 mins.

Nice bright and airy with the Northerly sun on your yard making it a divine sun trap.

Contact me now to inspect.



**For Sale**  
\$509,000

**View**  
[ljhooker.com.au/MCXF9Z](http://ljhooker.com.au/MCXF9Z)

**Contact**  
**Karen Herrick**  
0417 990 014  
[karen.herrick@ljhooker.com.au](mailto:karen.herrick@ljhooker.com.au)



**Disclaimer:** All information contained therein is gathered from relevant third parties sources. We cannot guarantee or give any warranty about the information provided. Interested parties must rely solely on their own enquiries.

**LJ Hooker Malua Bay**  
**(02) 4471 2344**



# More About this Property

Property ID	MCXF9Z
Property Type	Unit
Including	Toilets (2) Courtyard Dishwasher Built-in-Robes Secure Parking Fully Fenced internal access to garage

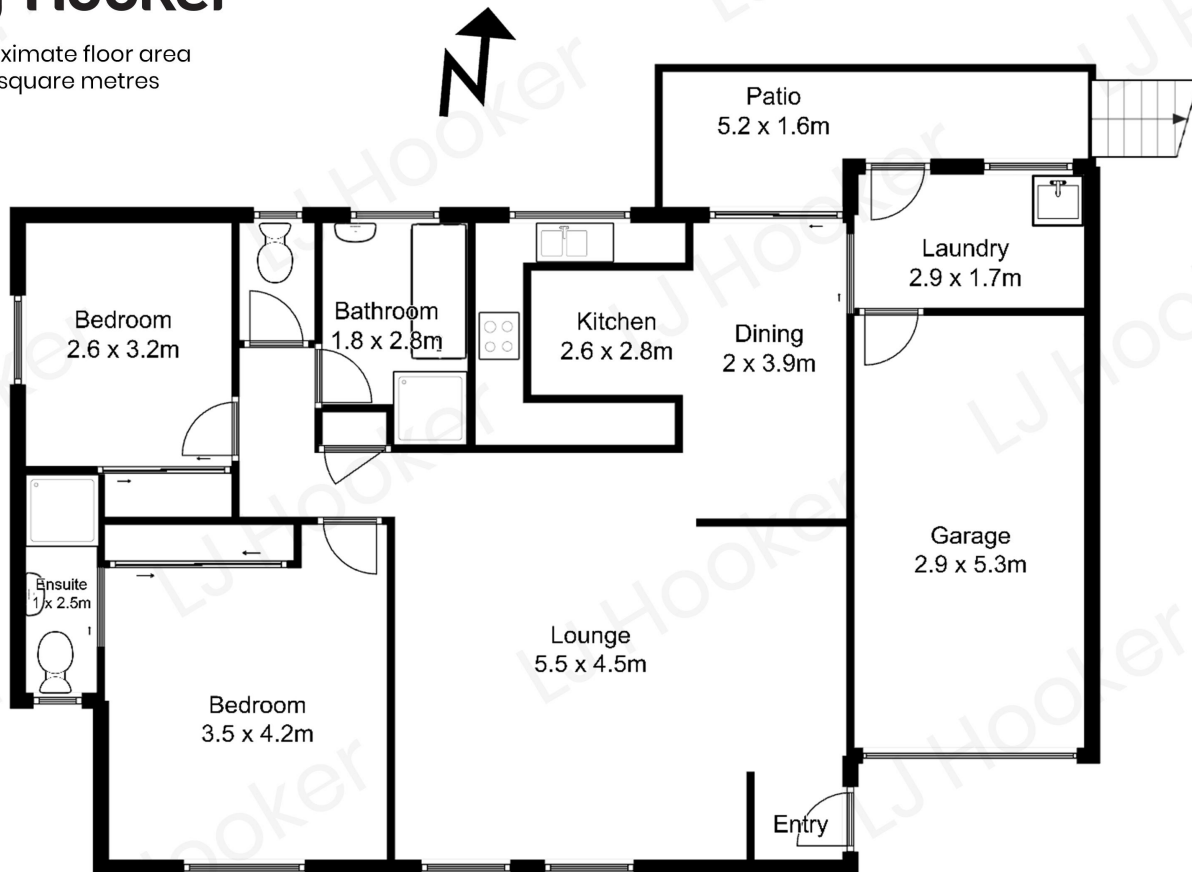
**Karen Herrick 0417 990 014**  
Licensed Real Estate Agent | Auctioneer | Licensed Stock & Station Agent |  
karen.herrick@ljhooker.com.au

**LJ Hooker Malua Bay (02) 4471 2344**  
Shop 1, 4 Kuppa Avenue, MALUA BAY NSW 2536  
maluabay.ljhooker.com.au | maluabay@ljhooker.com.au



**LJ Hooker Malua Bay**  
**(02) 4471 2344**

**Disclaimer:** All information contained therein is gathered from relevant third parties sources.  
We cannot guarantee or give any warranty about the information provided. Interested parties must rely solely on their own enquiries.



All measurements are approximate and are intended as a guide only