

1/6-8 Newth Place, Surf Beach

3 🏠 1 🚿 1 🚗

Beach Baby, Beach Baby, Give Me Your Hand!

FOR SALE
\$729,000

AGENTS

Karen Herrick
0417 990 014
karen.herrick@ljhooker.com.au

AGENCY

LJ Hooker Malua Bay
(02) 4471 2344

And let's walk to the beach at the end of our street, and have a paddle. Why not pack a picnic and sit under the shady trees while the kids and dogs run amok. Retired? Young family? Couple? Then you'll love this charming two-storey townhouse just a short stroll from the sand and surf! Tucked away in a small complex of 10 units, this solid brick-and-tile gem is the perfect blend of easy living and coastal cool.

With three comfortable sized bedrooms upstairs, a bright bathroom, and a single garage with internal access, there's plenty of space to relax and unwind. The open-plan living area flows into your very own private courtyard - ideal for lazy weekend BBQs, a splash of sunshine, or a quiet cuppa in the morning.

" maintenance and high on lifestyle, this home is perfect for holiday beach lovers, first-time buyers, or savvy investors. Cafés, shops, and public transport are all close by - and did we mention the beach?

Furniture may be included.

Whether you're chasing sunrises or salty air, this little slice of paradise has your name on it!

Contact me now for an inspection

All information contained therein is gathered from relevant third parties sources. We cannot guarantee or give any warranty about the information provided. Interested parties must rely solely on their own enquiries.

 **LJ Hooker**

MORE DETAILS

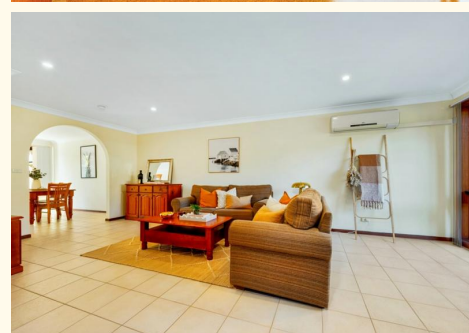
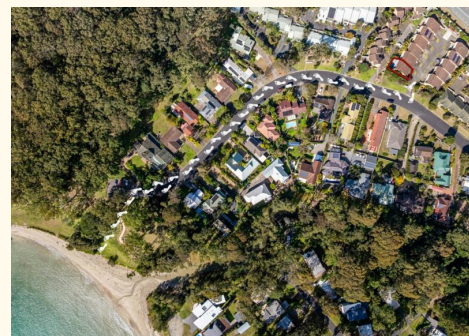
Property ID MD5F9Z
Property Type House
Including Air Conditioning
Toilets (2)
Courtyard
Balcony
Dishwasher
Built-in-Robes
Fully Fenced
Remote Garage

Karen Herrick 0417 990 014

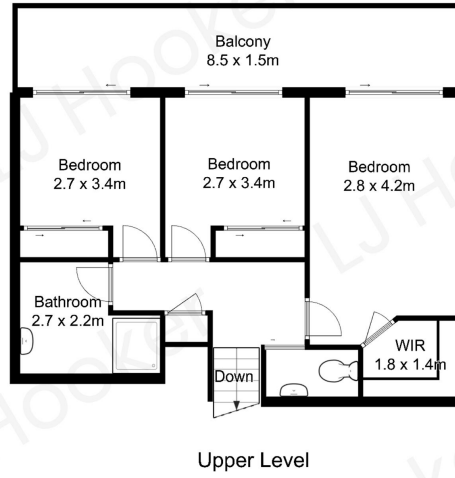
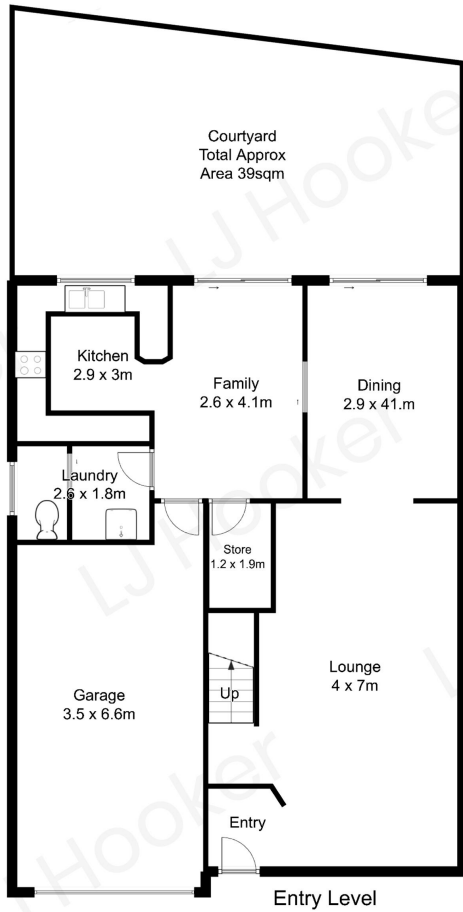
Licensed Real Estate Agent | Auctioneer | Licensed Stock & Station Agent | karen.herrick@ljhooker.com.au

LJ Hooker Malua Bay (02) 4471 2344

Shop 1, 4 Kuppa Avenue, MALUA BAY NSW 2536
maluabay.ljhooker.com.au | maluabay@ljhooker.com.au



Approximate Floor Area
170 square metres
excluding garage



All measurements are approximate and are intended as a guide only



All information contained therein is gathered from relevant third parties sources.
We cannot guarantee or give any warranty about the information provided.
Interested parties must rely solely on their own enquiries.

