

10 Keystone Dr, Sunbury


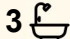
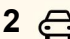
## Bespoke prestigious family home.

LJ Hooker Sunbury proudly presents 10 Keystone Drive, Sunbury. An architecturally designed masterpiece, perfectly positioned in one of Kingsfield's most sought-after streets.

Showcasing meticulous attention to detail and premium builder upgrades throughout, this stunning residence is highlighted by elegant gold accented finishes, herringbone flooring, and luxurious stone benchtops. Soaring high ceilings and refined design elements create a home that delivers the ultimate in contemporary living, space, and functionality.

From the moment you step inside, you're welcomed by a grand entrance that flows effortlessly into expansive open plan living. The home comprises four generously sized bedrooms, including two master suites. The remaining bedrooms feature premium built-in robes with integrated drawers—an exceptional inclusion rarely found.

A luxurious central bathroom services the home, complete with a bathtub and floor-to-ceiling, top-of-the-range tiling, complemented by a stylish guest powder room. Designed with versatility in mind, the main living area caters perfectly to family living, while a separate formal lounge provides the ideal space for guests or children's entertainment.

4  3  2 

**FOR SALE**

Please Call

**AGENTS**

Adam Elsherif  
0413 222 069  
adame@ljhooker.com.au

**AGENCY**

LJ Hooker Sunbury

All information contained therein is gathered from relevant third parties sources. We cannot guarantee or give any warranty about the information provided. Interested parties must rely solely on their own enquiries.

 **LJ Hooker**

The heart of the home is the showstopping kitchen, designed to impress even the most discerning home chef. It features premium stone benchtops, a striking waterfall island, and high-end integrated appliances including a 900mm cooktop, rangehood, oven, and dishwasher. A butler's pantry further enhances functionality with ample storage space.

Continuing the sense of space and sophistication, the home boasts high ceilings and downlighting throughout, creating an inviting and light-filled atmosphere. Step outside to the fully covered alfresco area, perfect for year-round entertaining, seamlessly blending indoor luxury with outdoor living.

#### Location Highlights:

Ideally situated within walking distance to the new Kingsfield Town Centre, set to include a full-line supermarket, medical centre, fitness facilities, and vibrant outdoor dining and green spaces. Enjoy easy access to local parks, kids playground, and a scenic lake, with a future primary school planned within the estate. Conveniently located with quick access to major arterial roads and only a short drive to Sunbury Train Station.

#### Key feature:

Zoned refrigerated heating & cooling system.

3.5 designer luxurious bathrooms.

Premium stone benchtops throughout.

Exposed aggregate driveway.

Fully covered alfresco area.

Roller blinds throughout.

Built in dishwasher.

Colourbond roof.

For more details or to book your private inspection please call Adam Elsherif on 0413 222 069.

## MORE DETAILS

Property ID	AAJ12
Property Type	House
Land Area	400 m2
Including	Toilets (4)

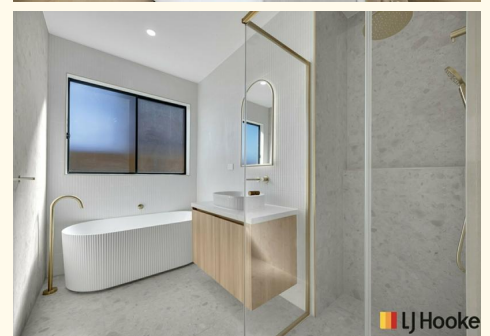
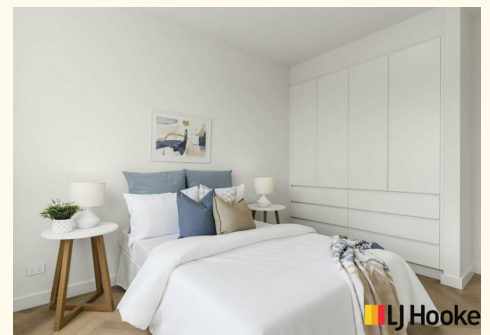
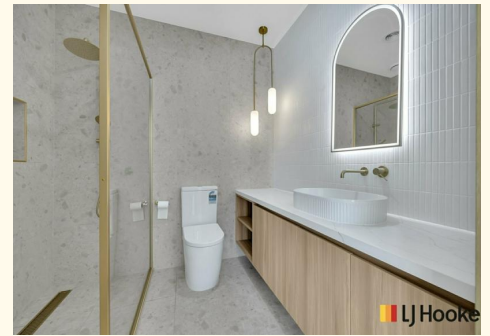
#### Adam Elsherif 0413 222 069

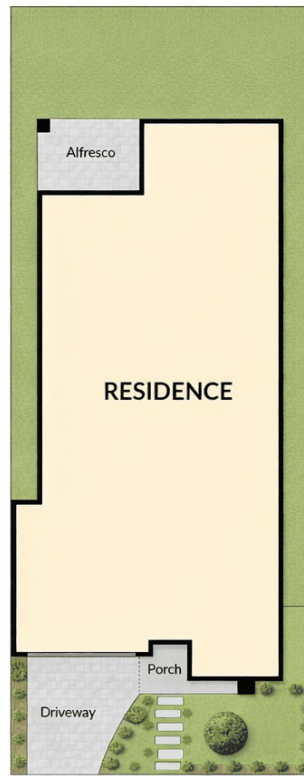
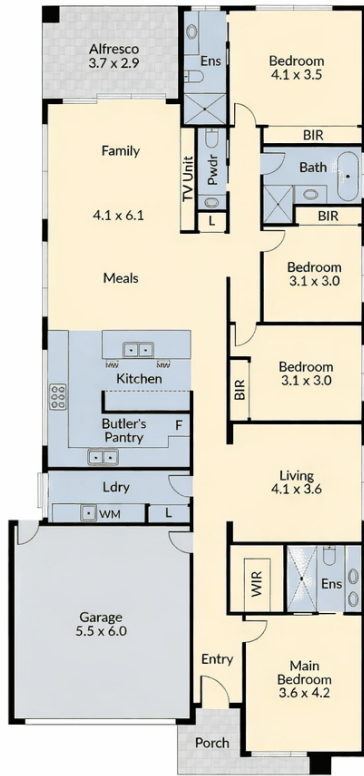
Director/OIEC | [adame@ljhooker.com.au](mailto:adame@ljhooker.com.au)

#### LJ Hooker Sunbury

Shop 12, Sunbury Square Shopping Centre, 2-28 Evans Street,  
SUNBURY VIC 3429

[sunbury.ljhooker.com.au](http://sunbury.ljhooker.com.au) | [sunbury@ljhooker.com.au](mailto:sunbury@ljhooker.com.au)





All information contained therein is gathered from relevant third parties sources.  
 We cannot guarantee or give any warranty about the information provided.  
 Interested parties must rely solely on their own enquiries.