

Success, 105/17 Malata Crescent

UNDER OFFER!



**PROPERTY TENANTED - VIEWINGS BY ADVERTISED HOME OPENS ONLY

Discover modern living at its finest in the sought-after Adara Apartments complex. This stylish 1-bedroom, 1-bathroom apartment with a secure car bay is in prime location and offers everything you need for a vibrant, convenient lifestyle. Perfect for first-time buyers, downsizers, or those seeking a lock-and-leave lifestyle, this apartment is move-in ready with nothing left to do but unpack and enjoy!

** Should you wish to make a non binding offer, please copy and paste this link below into your browser and follow the prompts

<https://prop.ps//OgovMKyDcgvE>

KEY FEATURES:



Disclaimer: All information contained therein is gathered from relevant third parties sources. We cannot guarantee or give any warranty about the information provided. Interested parties must rely solely on their own enquiries.

For Sale
Please Call

View
ljhooker.com.au/5FBUFFB

Contact
Diane Sheppard
0420 216 066
diane.sheppard@ljhvicpark.com.au
Michael Sheppard
0433 275 080
michael.sheppard@ljhvicpark.com.au

**LJ Hooker Victoria Park | Belmont
(WA)
(08) 9473 7777**

- * Contemporary kitchen with stone benchtops, glass splashback, stainless steel gas cooktop, brand new oven and dishwasher drawer
- * Spacious open-plan lounge/dining area leading to a large, north-facing balcony
- * Bedroom with direct balcony access through stylish pivot doors
- * Generous bathroom with shower and hand basin
- * Concealed laundry with dryer included
- * 4sqm storeroom on the same floor

ADDITIONAL FEATURES:

- * Secure car bay
- * Double-glazed windows,
- * Split system air conditioning
- * Intercom system
- * NBN ready for high-speed internet
- * Pedestrian access to Gateway Shopping Centre for ultimate convenience

COMPLEX AMENITIES:

- * Fully equipped gym
- * Swimming pool and BBQ facilities for residents
- * Lift access including disabled lift

Located in the thriving suburb of Success/Cockburn Central, this apartment puts you within walking distance of Cockburn Gateway Shopping Centre, Murdoch University, Fiona Stanley Hospital, and Cockburn Train/Bus Stations. With everything at your doorstep, you might not even need your car!

Why rent when you can own this fantastic property in a booming location?

Don't miss your chance to secure a modern, low-maintenance lifestyle.

SIZE:

Internal - 51m²

Balcony - 7m²

Storeroom - 4m²

Car bay - 13m²

TOTAL = 75m²

OUTGOINGS:

Council rates: \$1,900 +/- per annum

Water rates: \$1,025.82 per annum

Strata levies per quarter:

Admin - \$743.60

Reserve per quarter - \$220.22



**LJ Hooker Victoria Park | Belmont
(WA)
(08) 9473 7777**

Disclaimer: All information contained therein is gathered from relevant third parties sources. We cannot guarantee or give any warranty about the information provided. Interested parties must rely solely on their own enquiries.

More About this Property

Property ID	5FBUFFB
Property Type	Unit

Diane Sheppard 0420 216 066

Real Estate and Business Agent | diane.sheppard@ljhvicpark.com.au

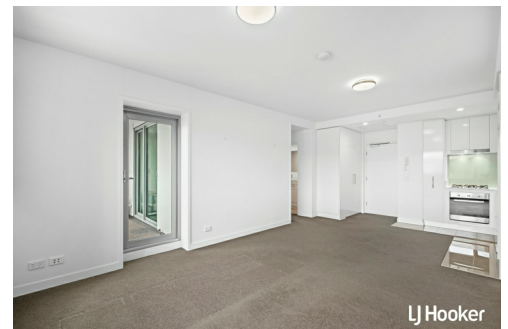
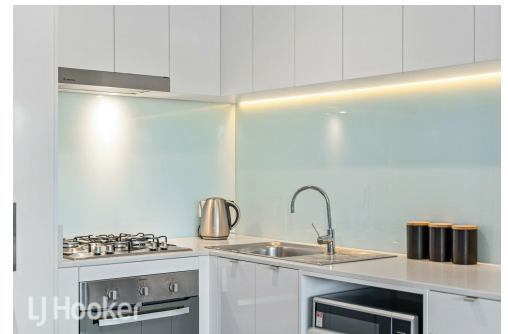
Michael Sheppard 0433 275 080

Sales Consultant | michael.sheppard@ljhvicpark.com.au

LJ Hooker Victoria Park | Belmont (WA) (08) 9473 7777

288 Albany Highway, VICTORIA PARK WA 6100

victoriapark-belmontwa.ljhooker.com.au | reception@ljhvicpark.com.au



Disclaimer: All information contained therein is gathered from relevant third parties sources.

We cannot guarantee or give any warranty about the information provided. Interested parties must rely solely on their own enquiries.

**LJ Hooker Victoria Park | Belmont
(WA)
(08) 9473 7777**