

## Stuart Park, 7/6 Tipperary Court

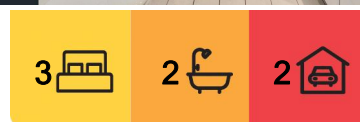
### Spacious Entertainer Close To Marina

This unit is a lifestyle choice for those wanting to live in a special little pocket of Darwin. Tipperary is a boutique neighbourhood with its own marina and great little shopping complex, parks, bike paths & boat ramp nearby. The unit is well positioned to enjoy the amenities and is only minutes from the Waterfront recreational area and Darwin City. Easy access to arterial roads.

- \* Modern & Spacious Open Plan End Unit
- \* Fantastic Balcony for entertaining
- \* Modern kitchen with stone bench tops and stainless appliances
- \* Generous size main bathroom with large shower
- \* Superb master bedroom with walk-in robe, large ensuite and balcony access
- \* Spacious 2nd & 3rd bedrooms with natural light and built in robes
- \* Internal Laundry
- \* Split-system air conditioning throughout



**Disclaimer:** All information contained therein is gathered from relevant third parties sources. We cannot guarantee or give any warranty about the information provided. Interested parties must rely solely on their own enquiries.



**For Sale**  
Offers Over \$467,000

**View**  
[ljhooker.com.au/5AAWF2X](http://ljhooker.com.au/5AAWF2X)

**Contact**  
**Rory Turner**  
0451 600 030  
[rturner@ljhookerdarwin.com.au](mailto:rturner@ljhookerdarwin.com.au)  
**Riley Loy**  
0422 729 288  
[rloy@ljhookerdarwin.com.au](mailto:rloy@ljhookerdarwin.com.au)

**LJ Hooker Darwin**  
(08) 8924 0900

- \* Secure complex with intercom and lift
- \* Secure under cover car parks
- \* Complex has shaded pool in well-maintained complex

Body Corporate

Admin \$1309 Per 1/4 Approx

Sinking \$229.50 Per 1/4 Approx

Total \$1,538.50

Rates approx per annum \$1650

Please Call Rory Turner on 0451600030 to arrange your private inspection or email

Rturner@ljhookerdarwin.com.au

## More About this Property

<b>Property ID</b>	5AAWF2X
<b>Property Type</b>	Apartment
<b>House Size</b>	186 m <sup>2</sup>
<b>Including</b>	Toilets (2)

**Rory Turner 0451 600 030**

Sales Representative | rturner@ljhookerdarwin.com.au

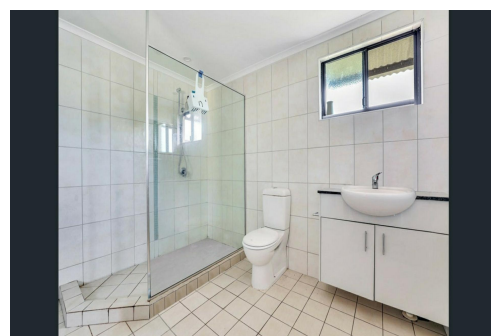
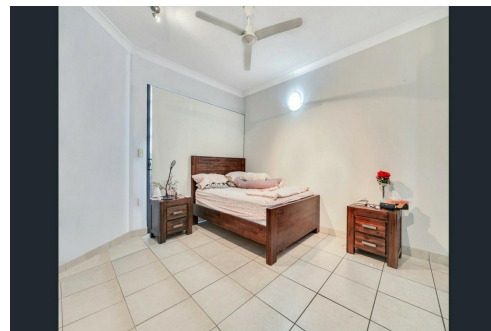
**Riley Loy 0422 729 288**

Sales Representative | rloy@ljhookerdarwin.com.au

**LJ Hooker Darwin (08) 8924 0900**

Shop 1/25 Parap Road, PARAP NT 0820

darwin.ljhooker.com.au | reception@ljhookerdarwin.com.au



**Disclaimer:** All information contained therein is gathered from relevant third parties sources. We cannot guarantee or give any warranty about the information provided. Interested parties must rely solely on their own enquiries.

**LJ Hooker Darwin  
(08) 8924 0900**



7-6 Tipperary Court, Stuart Park

\* Dimensions are approximate and for illustrative purposes only