



55-57 Murray Street, Stockport


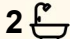

Space to Grow, Room to Dream & Endless Potential!

Set on an impressive allotment of approximately 4,000m² in the heart of the charming township of Stockport, this property presents a fantastic opportunity for families, first home buyers, tradies, investors, horse enthusiasts and those seeking a hobby farm lifestyle.

Offering the perfect balance of comfortable family living and country charm, there is plenty of space for children and pets to roam, room for sheds, animals or future improvements and endless opportunities to create the lifestyle you've always dreamed of.

Whether you're looking for your first home with room to grow, a peaceful family retreat, a property to accommodate your tools, toys and machinery, or an investment with future potential, this versatile offering caters to a wide range of buyers.

Positioned within the welcoming community of Stockport and just a short drive to Kapunda, Gawler and the Northern Adelaide suburbs, you'll enjoy the best of both worlds a relaxed rural setting with everyday conveniences, schools, shops and services still within easy reach. This is a lifestyle opportunity rarely found and one that offers space, freedom and potential for years to come.

4  2  4 

FOR SALE

Please Call

AGENTS

Maigen Norman
0418 557 597
maigenn@ljhsales.com.au

Brianna Stops
0437 969 863
briannas@ljhsales.com.au

AGENCY

LJ Hooker Property Specialists Gawler |
Barossa
(08) 8522 3311

All information contained therein is gathered from relevant third parties sources.
We cannot guarantee or give any warranty about the information provided.
Interested parties must rely solely on their own enquiries.

 **LJ Hooker**

Features:

- Main bedroom complete with ensuite and walk-in robe.
- Spacious bedrooms 2, 3 and 4, all with built-in robes.
- Open-plan living area with sliding doors flowing out to the outdoor entertaining space.
- Kitchen with ample bench space, electric stovetop and island bench overlooking the meals area.
- Undercover entertaining area.
- Fire pit area.
- 6m x 8m shed with power.
- Drive-through access to the rear yard.
- Approx. 10.8kW solar system.
- Ducted reverse-cycle air conditioning.

CT / 5501/558
Land size / 4040m2 (approx.)
Internal Living / 141m2 (approx.)
Council / Clare and Gilbert Valleys

For any further information, or to make a time to inspect, please contact Maigen Norman on 0418 557 597.

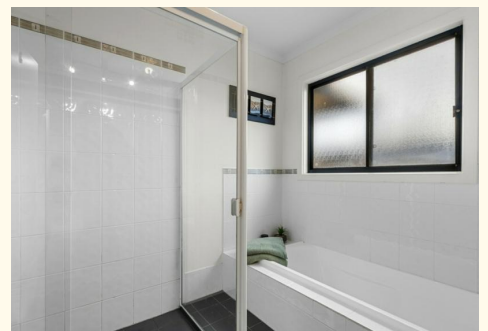
All information provided has been obtained from sources we believe to be accurate, however, we cannot guarantee the information is accurate and we accept no liability for any errors or omissions (including but not limited to a property's land size, floor plans and size, building age and condition). Interested parties should make their own enquiries and obtain their own legal and financial advice. Should this property be scheduled for auction, the Vendor's Statement may be inspected at our LJ Hooker Property Specialists Real Estate office for 3 consecutive business days immediately preceding the auction and at the auction for 30 minutes before it starts. RLA 343733

MORE DETAILS

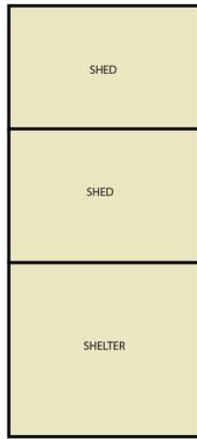
Property ID	1W48G54
Property Type	House
House Size	141 m2
Land Area	4040 m2
Including	Air Conditioning Ducted Cooling Ducted Heating Dishwasher Outdoor Entertaining Built-in-Robes Secure Parking Solar Panels Water Tank

Maigen Norman 0418 557 597
Sales Specialist | maigenn@ljhsales.com.au
Brianna Stopps 0437 969 863
Sales Specialist | briannas@ljhsales.com.au

LJ Hooker Property Specialists Gawler | Barossa (08) 8522 3311
26 Adelaide Road, GAWLER SA 5118
gawlerbarossa.ljhooker.com.au | gawler@ljhsupport.com.au



55-57 Murray Street,
STOCKPORT



NOT IN POSITION



Living:	145.665Q.M
Verandah:	60.435Q.M
Shed:	110.355Q.M
Shelter:	36.485Q.M
TOTAL:	352.825Q.M

This Drawing is for illustration purposes only. All measurements are internal and approximate. Details intended to be relied upon should be independently verified.