



Stirling, 58 Fremantle Drive

Build Your Dream Home in the Heart of Stirling

With so much promise in the current property market, this is an exceptional opportunity you won't want to miss. Situated in one of Weston Creek's most desirable suburbs, the existing residence is ready for demolition and new dreams are waiting to be built. The generous 811m² flat block gives you the freedom to knock down and create your forever home or, if you're a seasoned developer, transform a block bursting with potential.

Build your dream home or next development: Design the family home you've always imagined-expansive living areas, sun-soaked entertaining zones and a spacious backyard oasis, all tailored to your lifestyle. If you'd rather hit the ground running, plans are already drafted for a luxurious 476m² two-storey home that maximises the potential of the block and caters for the largest of families. These thoughtfully designed plans are subject to approval and offer comfort, functionality and wow factor.

Join a thriving, family-focused community: Stirling is loved by locals for its peaceful, leafy



Disclaimer: All information contained therein is gathered from relevant third parties sources. We cannot guarantee or give any warranty about the information provided. Interested parties must rely solely on their own enquiries.



For Sale
\$785,000+

View
ljhooker.com.au/CK7HQH

Contact
Patrick Kinnane
0430 435 330
Patrick.kinnane@ljhooker.com.au

EER ★★★★★

LJ Hooker Tuggeranong
(02) 6189 0100

streets, strong sense of community and outstanding amenities for families. Schools, parklands, playgrounds and scenic walking trails are all nearby. Cooleman Court-with restaurants, shops, cafés and essential services-is just a short walk away. With easy access to public transport, major roads and Woden or the City, you'll enjoy convenience and connection in this established neighbourhood.

Contact us today: This is a smart investment in lifestyle and location. If you've ever dreamed of building your own home or investing in a growth area, this is the opportunity you've been waiting for. Get in touch today to view the plans and explore the possibilities.

Why you'll love this property:

- 811m² flat block in highly desirable Weston Creek suburb
- Zoned for residential use with outstanding renovation or redevelopment potential
- The perfect site to develop your forever home or a great investment
- Drafted plans for a 476m² luxury residence (subject to building approval)
- Excellent potential in a high-demand market
- Family-focused location a few minutes from Cooleman Court, restaurants, cafés, clubs and shops
- Short walk to St John Vianney's Primary School, Mount Stromlo High and Weston Creek Labour Club
- Across the road from parkland and walking trails
- Great transport links to Woden, the City and beyond
- Block size: 811m²
- House size: 108m²
- UV: \$628,000
- EER: 3.5 Stars

Disclaimer:

Please note that while all care has been taken regarding general information and marketing information compiled for this advertisement, LJ HOOKER TUGGERANONG does not accept responsibility and disclaim all liabilities in regard to any errors or inaccuracies contained herein. Figures quoted above are approximate values based on available information. We encourage prospective parties to rely on their own investigation and in-person inspections to ensure this property meets their individual needs and circumstances.

More About this Property

| | |
|---------------|--------|
| Property ID | CK7HQH |
| Property Type | House |
| Land Area | 811 m2 |
| EER | 3.5 |

Patrick Kinnane 0430 435 330

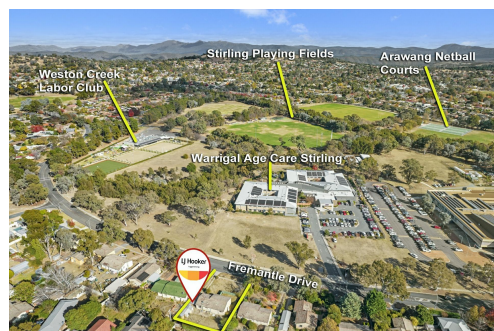
Licenced Agent | Patrick.kinnane@ljhooker.com.au

LJ Hooker Tuggeranong (02) 6189 0100

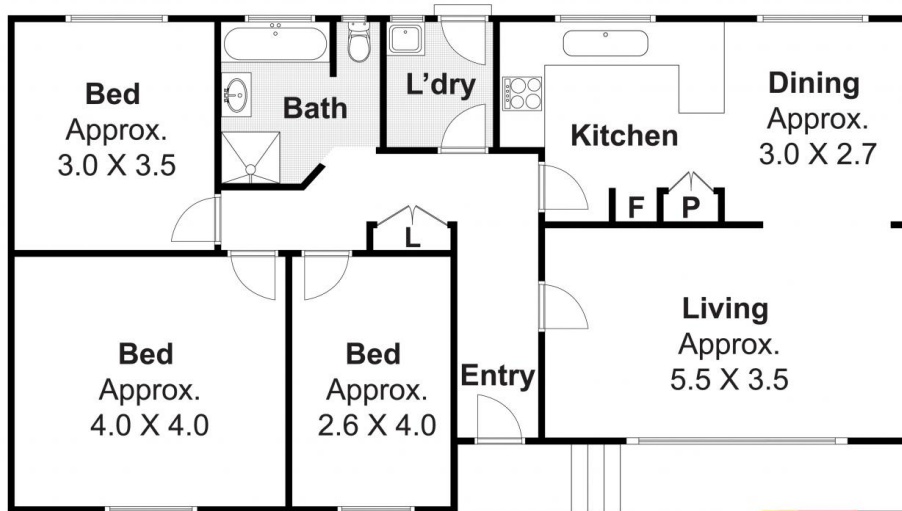
Suite 1, 1st Floor, South Point Shopping Centre, 210 Anketell Street
tuggeranong.ljhooker.com.au | tuggeranong@ljhooker.com.au



Disclaimer: All information contained therein is gathered from relevant third parties sources. We cannot guarantee or give any warranty about the information provided. Interested parties must rely solely on their own enquiries.



LJ Hooker Tuggeranong
(02) 6189 0100



Measurements are approximate. Not to Scale. For Illustrative purposes only.

58 Fremantle Drive, Stirling, ACT 2611

0m 2m 4m 6m



LJ Hooker Tuggeranong
(02) 6189 0100

Disclaimer: All information contained therein is gathered from relevant third parties sources. We cannot guarantee or give any warranty about the information provided. Interested parties must rely solely on their own enquiries.