

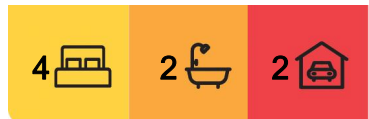


## Stirling, 1 Mackie Crescent

### THE HAPPY HOUSE

Spacious, private & dearly loved - this inviting residence merges impeccable design with natural light, cooling breezes and flowing space. This home embodies all that buyers seek within Weston Creek - a large, flat block, surrounded by nature, coveted north-to-the-rear aspect, a family friendly floorplan with wonderful indoor & outdoor entertaining space. Impeccably maintained, this much-loved home welcomes a new family to add their own personal touches and make their own memories.

You are welcomed indoors past the established yet easy care front gardens to the spacious living area, with ceiling fan and a backdrop of greenery from each window. Wander further through to the kitchen and dining area, perfectly separate yet open, the well-maintained kitchen offering 900mm gas oven & cooktop plus plenty of bench and storage space. Indoor/outdoor flow is perfected as this area flows with ease to the spacious back deck and yard surrounds.



**For Sale**  
\$959,000 +

**View**  
By Appointment

**Contact**  
**Jane Macken**  
0408 662 119  
jane.macken@ljhwodenweston.com.au

**Emma Irwin**  
0422415008  
emma.irwin@ljhwodenweston.com.au

**EER** ★★★★★

**LJ Hooker Woden | Weston**  
(02) 6288 8888



**Disclaimer:** All information contained therein is gathered from relevant third parties sources. We cannot guarantee or give any warranty about the information provided. Interested parties must rely solely on their own enquiries.

Four spacious bedrooms are on offer. The master bedroom is especially spacious, the clever extension providing for an updated ensuite, walk in robe plus access to the backyard. Three other bedrooms are on offer, two with built in robes and all are serviced by the modern master bathroom with bath, shower and separate WC. Bedrooms one and two feature ceiling fans.

Outdoors, the covered deck is the perfect space to entertain, both in summer and in winter, and overlook the children and pets while they play. An expansive covered entertaining space, the deck embraces awnings for the summer and the north-to-the-rear aspect providing warmth in winter. Grassed areas are surrounded by easy care established gardens including plentiful lemon trees. There is a long list of additional features ensuring this is truly the perfect family home, including a large separate laundry with built in storage, 14 x 250w solar panels, solar hot water, ducted electric heating and cooling, oversized garage, additional off-street parking both at the front of the home and behind the gate plus storage shed.

Located within one of Weston Creek's highly desired suburbs, it offers close proximity to The Labor Club, Stirling Playing Fields, quality schools, Cooleman Court and a short drive to Woden Town Centre. This could be your dream family retreat.

Features include:

- Private, 880m2 block
- Dearly loved and maintained family home
- Separate living and dining areas
- Kitchen with 900mm gas cooktop and oven, ample bench & storage space
- Spacious covered rear deck overlooking gardens
- Established lawns, gardens & lemon trees
- Master bedroom with walk in robe, ensuite & ceiling fan
- Three additional bedrooms, two with built in robes
- Main bathroom with bath, shower and separate WC
- Ducted reverse cycle heating and cooling
- Oversized garage with plenty of additional off street parking
- Solar hot water
- 14 x 250w solar panels
- Large separate laundry with built in storage

Land size: 880m2

Living size: 129m2 living + 37m2 garage (approx.)

Land value: \$586,000 (2024)

Rates: \$3,958.33 p.a (approx.)

Land tax: \$7,810 p.a (approx.)

Construction: Ex-Gov residence circa 1970s

EER: 0.5 stars



**LJ Hooker Woden | Weston**  
**(02) 6288 8888**

**Disclaimer:** All information contained therein is gathered from relevant third parties sources. We cannot guarantee or give any warranty about the information provided. Interested parties must rely solely on their own enquiries.



## More About this Property

<b>Property ID</b>	HHGH5W
<b>Property Type</b>	House
<b>House Size</b>	166 m <sup>2</sup>
<b>Land Area</b>	880 m <sup>2</sup>
<b>EER</b>	0.5

### Jane Macken 0408 662 119

Franchise Owner, Licensee, Licensed Agent ACT/NSW |  
jane.macken@ljhwodenweston.com.au

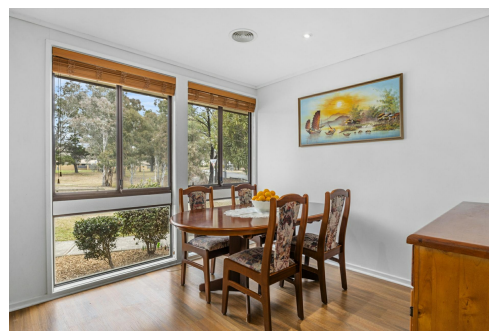
### Emma Irwin 0422415008

Sales Consultant to Jane Macken | emma.irwin@ljhwodenweston.com.au

### LJ Hooker Woden | Weston (02) 6288 8888

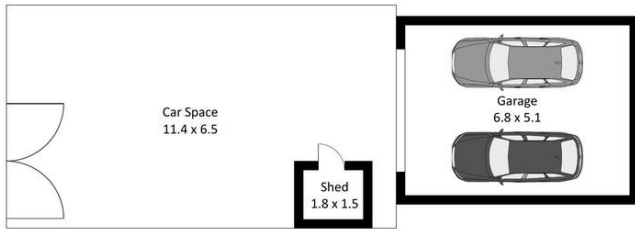
23 Brierly Street, WESTON CREEK ACT 2611

westoncreek.ljhooker.com.au | reception@ljhwodenweston.com.au



**Disclaimer:** All information contained therein is gathered from relevant third parties sources.  
We cannot guarantee or give any warranty about the information provided. Interested parties must rely solely on their own enquiries.

**LJ Hooker Woden | Weston**  
**(02) 6288 8888**



The site plan and floor plan are not to scale; measurements are indicative and in metres. Bushes and trees are placed for illustration purposes. Plans should not be relied on. Interested parties should make and rely on their own enquiries.



**LJ Hooker Woden | Weston**  
(02) 6288 8888

**Disclaimer:** All information contained therein is gathered from relevant third parties sources. We cannot guarantee or give any warranty about the information provided. Interested parties must rely solely on their own enquiries.