



93 Parnella Drive, Stieglitz

## Coastal Escape on Parnella Drive

Nestled in the quiet seaside community of Stieglitz, this charming property at 93 Parnella Drive offers the perfect blend of relaxation and lifestyle. Featuring three bedrooms and one bathroom, the home is designed for easy coastal living, whether as a permanent residence, family holiday home, or investment.

Set on a flat, fully fenced 801 sqm block, the property provides plenty of space for outdoor entertaining, gardening, or storing the boat and caravan. Light-filled interiors and a versatile layout create a warm and welcoming atmosphere, while the spacious yard offers room for the whole family to enjoy.

Just moments from the pristine waters of Georges Bay and only a short drive into the vibrant township of St Helens, you'll enjoy convenience alongside tranquillity. With fishing, beaches, and the world-renowned Bay of Fires at your doorstep, 93 Parnella Drive presents an outstanding opportunity to secure your own slice of Tasmania's East Coast paradise.

Contact us today for more information and to book a private inspection.

3  1  1 

**FOR SALE**  
\$640,000 - \$670,000

**VIEW**  
By Appointment

**AGENTS**  
Gayle MacDonald  
0424 831 915  
gmacdonald.sthelens@ljhooker.com.au

**AGENCY**  
LJ Hooker St Helens  
(03) 6376 2300

All information contained therein is gathered from relevant third parties sources.  
We cannot guarantee or give any warranty about the information provided.  
Interested parties must rely solely on their own enquiries.

 **LJ Hooker**

## MORE DETAILS

Property ID	PYYFN1
Property Type	House
Land Area	799 m2
Including	Air Conditioning
	Toilets (1)
	Deck
	Dishwasher
	Outdoor Entertaining
	Floorboards
	Built-in-Robes
	Secure Parking

**Gayle MacDonald 0424 831 915**

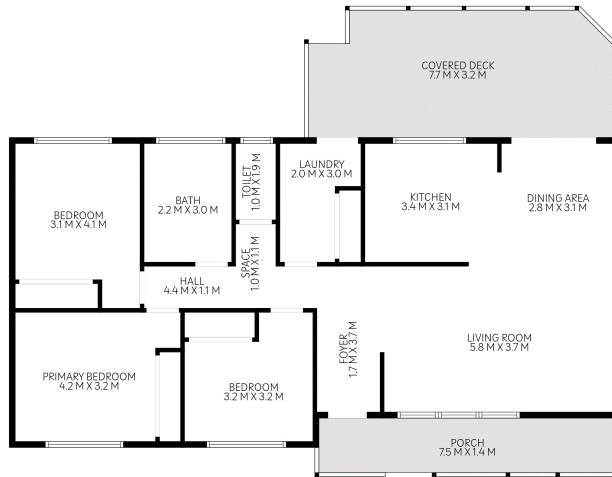
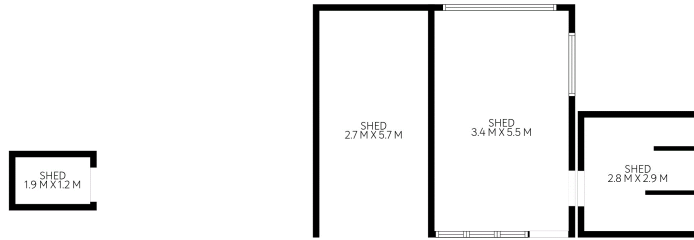
Property Consultant | [gmacdonald.sthelens@ljhooker.com.au](mailto:gmacdonald.sthelens@ljhooker.com.au)

**LJ Hooker St Helens (03) 6376 2300**

36 Cecilia Street, ST HELENS TAS 7216

[sthelens.ljhooker.com.au](http://sthelens.ljhooker.com.au) | [sthelens@ljhooker.com.au](mailto:sthelens@ljhooker.com.au)





93 Parnella Drive, Stieglitz

TOTAL: 107 m<sup>2</sup>

FLOOR 1: 107 m<sup>2</sup>

EXCLUDED AREAS: PORCH: 10 m<sup>2</sup>, COVERED DECK: 24 m<sup>2</sup>, SHED: 45 m<sup>2</sup>, WALLS: 14 m<sup>2</sup>

 LJ Hooker



FLOOR PLAN IS INDICATIVE OF THE LAYOUT. DIMENSIONS ARE HIGHLY RELIABLE NOT GUARANTEED

All information contained therein is gathered from relevant third parties sources.  
 We cannot guarantee or give any warranty about the information provided.  
 Interested parties must rely solely on their own enquiries.

 LJ Hooker