



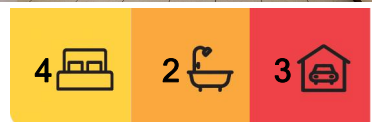
Stanmore, 55 - 155 Burke Road

Scenic Country Living on 80 Acres

Welcome to 55 - 155 Burke Road.

Nestled in the tranquil hinterland of Stanmore, this picturesque 33.24-hectare property offers the ultimate rural lifestyle with stunning mountain views, abundant natural beauty, and the added bonus of an established lemon myrtle plantation. The charming four-bedroom, two-bathroom residence has been tastefully updated throughout and is positioned to take full advantage of its panoramic surrounds, offering both comfort and opportunity in a private, elevated setting.

Whether you're looking for a peaceful retreat or a productive acreage to live and work from, this property delivers. With multiple dams, a pump-fed irrigation system for the gardens, and recently upgraded water infrastructure, it's ideal for those seeking a self-sufficient lifestyle. Just 8 minutes to Woodford and 30 minutes to the Glass House Mountains, this is a rare chance to secure expansive, improved acreage with versatile



For Sale
Expressions Of Interest

View
By Appointment

Contact
Jack Cornford
0484 241 803
jack.cornford@ljhooker.com.au



Disclaimer: All information contained therein is gathered from relevant third parties sources. We cannot guarantee or give any warranty about the information provided. Interested parties must rely solely on their own enquiries.

LJ Hooker Beerwah
(07) 5318 7277

infrastructure and an enviable outlook.

Key Features:

- 33.24 hectares of improved land with mountain views
- Four bedrooms, two bathrooms, and two spacious living areas
- Renovated in 2022: new paint, carpets, curtains, windows, and fly screens
- 2021 ducted air conditioning system for year-round comfort
- Fully established lemon myrtle plantation
- Two new poly water tanks installed in October 2024
- Several dams including one with a water pump for garden irrigation
- Rainforest plantings and native raspberries throughout the property
- Two separate wood pine plantation patches at the rear
- Large powered shed with 2 car ports plus space for a caravan, tractor or boat and work area
- Located just 8 minutes to Woodford and 30 minutes to Glass House Mountains
- 1 hour to Brisbane airport

Don't miss this rare opportunity to secure a versatile lifestyle property with income potential and breathtaking views.

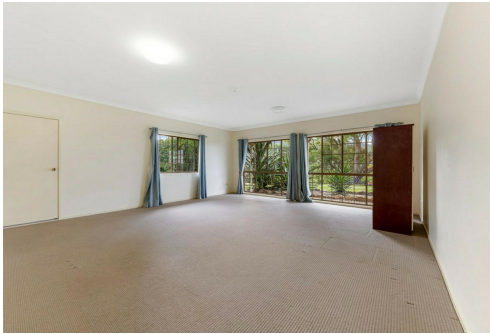
Call Jack Cornford today on 0484 241 803 to arrange your private inspection.

More About this Property

| | |
|---------------|---------------|
| Property ID | UFJ0D |
| Property Type | House |
| Land Area | 33.24 hectare |

Jack Cornford 0484 241 803
Principal | jack.cornford@ljhooker.com.au

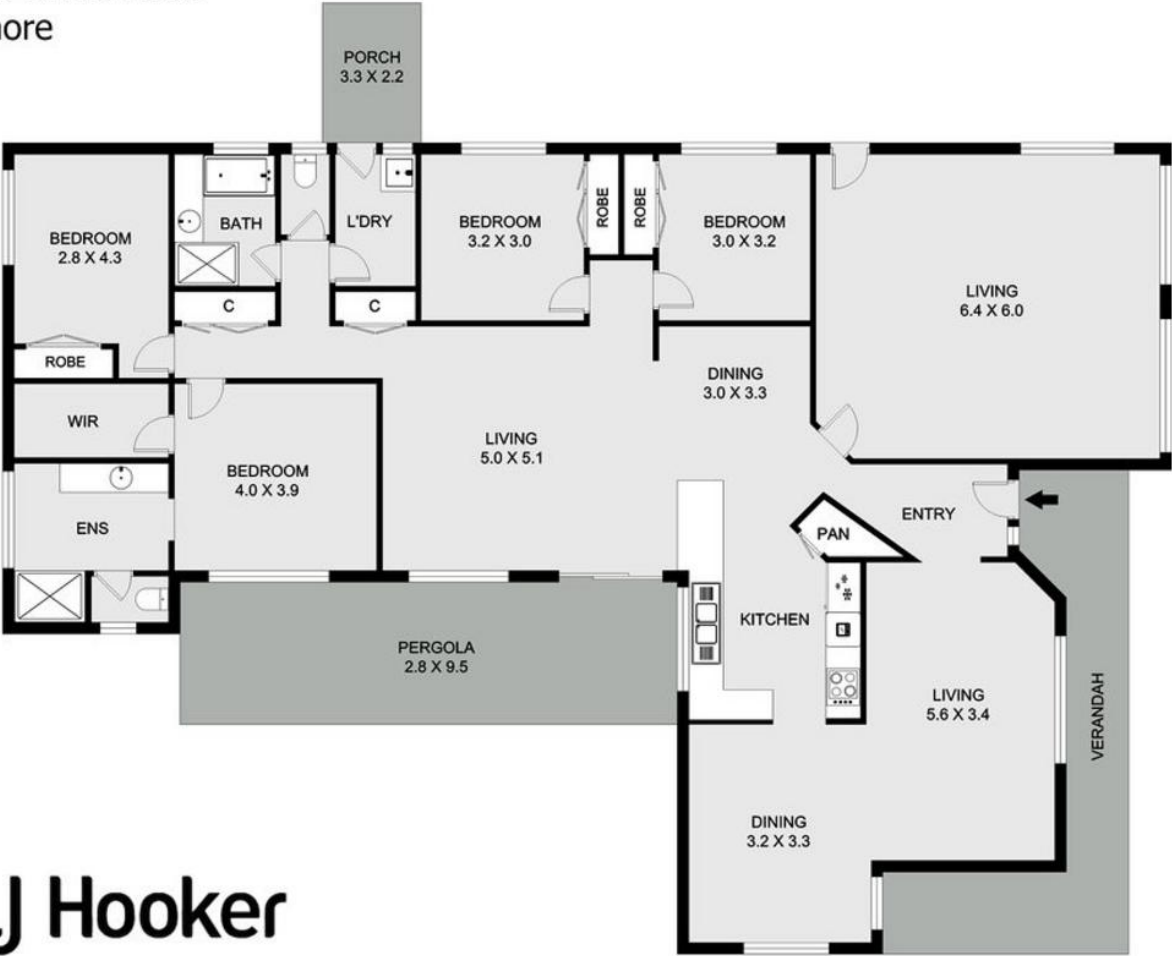
LJ Hooker Beerwah (07) 5318 7277
4/22 Peachester Road, BEERWAH QLD 4519
Beerwah.ljhooker.com.au | beerwah@ljhooker.com.au



Disclaimer: All information contained therein is gathered from relevant third parties sources. We cannot guarantee or give any warranty about the information provided. Interested parties must rely solely on their own enquiries.

LJ Hooker Beerwah
(07) 5318 7277

55-155 Burke Road
Stanmore



This floor plan is conceptual only, it is provided for illustrative purposes and should not be relied upon. We make no guarantee as to the accuracy of this plan, all interested parties should make and rely on their own enquiries in determining the accuracy and information contained on this floor or site plan.



LJ Hooker Beerwah
(07) 5318 7277

Disclaimer: All information contained therein is gathered from relevant third parties sources. We cannot guarantee or give any warranty about the information provided. Interested parties must rely solely on their own enquiries.